

valor
THE ORIGINAL
RADIANT GAS FIREPLACE™
www.valorfireplaces.com

H5 Series



1100 H5 Engine with 1101DWK Pebble Beach Fire, 1115LSL Ledgestone Liner & 1135TSB 3-1/4" 3-Sided Trim in Black Powder Coated Paint

Valor Distinction. Steady, Even Heat.

The Horizon Series has proven itself as a tried and true heater, warming thousands of homes across North America for almost two decades.

The H5 continues the Horizon tradition with a diverse fireplace, blending distinct, quality materials with the latest in radiant and convective heat technology.

Flexible venting options and slim engine depth position the H5 as a versatile fireplace upgrade, ideal for existing home renovations and new construction.

The H5 combines compact design with a generous viewing area, highlighting a collection of ambient fires and glowing embers within.

Equipped with four unique firebed options including Murano glass, decorative glass, traditional log and Pebble Beach driftwood, the H5 caters to those seeking both traditional and contemporary flame appeal.

Enhance flame ambience with one of four firebox liners including Valor red brick, stacked ledgerstone, plain black liner and fluted black liner. (Optional reflective glass panel available for the fluted and plain black liners)

Available in black, bronze, painted and brushed nickel finishes, a collection of three and four-sided trim kits transition from fireplace to living space seamlessly.

A vibrant addition to the Horizon Series family, the H5 is sure to bring countless hours of steady, reliable warmth for future years to come.



1150 H5 Engine with Traditional Log Burner, 1125FBL Fluted Black Liner & 1140FSN 4" 4-Sided Trim Kit in Plated Brushed Nickel

Surround Finishes



1135TSBEN Edgemont Single Door - Plated Brushed Nickel Door with 3-Sided Black Trim



1130FFK 1" Fixed Framing Kit - Black Powder Coated Paint



1135TSB 3-Sided Surround - Black Powder Coated Paint



1149EDV Edgemont Double Door - Vintage Iron Powder Coated Doors with Black Backing Plate



1100 H5 Engine with 1103DGM Murano Glass Set, 1125FBL Fluted Black Liner, 1105RGL Reflective Glass Panel & 1140FSZ 4" 4-Sided Trim in Bronze Powder Coated Paint



1140FSB 4" 4-Sided Surround - Black Powder Coated Paint



1140FSPN 4" 4-Sided Surround - Painted Nickel Powder Coat



1140FSN 4" 4-Sided Surround - Plated Brushed Nickel



1149EDZ Edgemont Double Door - Bronze Powder Coated Doors with Black Backing Plate

H5 FIREPLACE CAST SURROUNDS

Ideal for both new construction and renovation projects alike, optional cast mantel kits for the H5 are a cost effective, easy to install upgrade for your home. The majority of pre-existing wood and gas fireplaces are inefficient, resulting in excessive heat loss. The H5 cast mantel collection works perfectly to enclose and finish your existing fireplace opening.

A huge energy upgrade, the H5 fireplace and cast mantel collection work together, increasing heat performance, energy efficiency and design appeal.

CASTING COMPONENTS	Part Number	Description
	1145CBP	Cast Backing Plate (38-3/4" h x 41-1/2" w) - requires 1145BDK
	1145BDK	Barrier, Doors & Cover Kit - for use with the 1145CBP
	1147CMS	Cast Mantel Surround (41-3/8" height x 51-3/4" (bottom) & 54-7/8" (top) width) - requires both 1145CBP & 1145BDK
	1148CIR	Cast Inlay - Reeds
	1148CIS	Cast Inlay - Sheffield
	1148CIT	Cast Inlay - Thatch

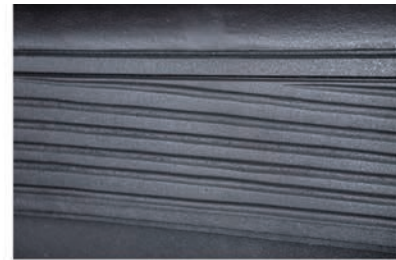
THATCH INLAY - 1148CIT



SHEFFIELD INLAY - 1148CIS

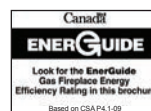
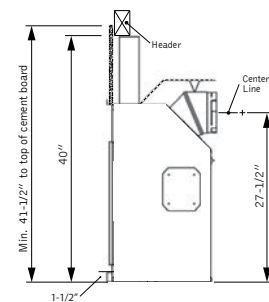
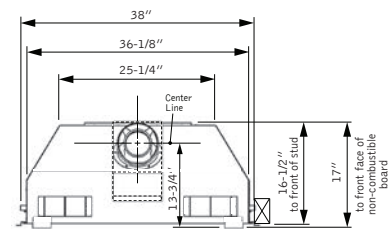
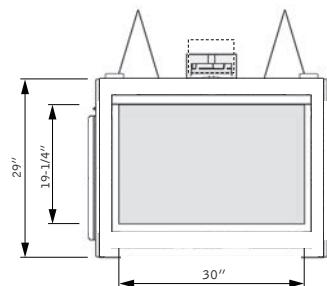


REEDS INLAY - 1148CIR



Shown Above - Cast Inlays installed with the 1145CBP, 1145BDK & 1147CMS

H5 PRODUCT DIMENSIONS



Designed and manufactured by:
 Copyright Miles Industries Ltd. 2015
 Proudly made in North America
 BRH515aE - May 2015

H5 FIREPLACE COMPONENTS

ENGINES	Model	Description
	1100IN	Direct Vent H5 Series Contemporary Burner - NG (requires fuel bed)
	1100IP	Direct Vent H5 Series Contemporary Burner - LPG (requires fuel bed)
	1150ILN	Direct Vent H5 Series Traditional Burner - NG (comes w/ traditional log set)
	1150ILP	Direct Vent H5 Series Traditional Burner - LPG (comes w/ traditional log set)

FUEL BEDS (1100IN/IP only)	Model	Description
	1101DWK	Pebble Beach Fire - Driftwood, Pebbles & River Rock
	1103DGM	Murano Glass Set
	1104DGS	Decorative Glass Set

LINERS	Model	Description
	1105RGL	Reflective Glass Panel (for use with the 1125FBL & 1160PBL)
	1110VRL	Valor Red Brick Liner
	1115LSL	Ledgestone Liner
	1125FBL	Fluted Black Liner
	1160PBL	Plain Black Liner

SURROUNDS	Model	Description
	1130FFK	1" Fixed Framing Kit in Black Powder Coat (26-5/8" h x 35-3/4" w)
	1135TSB	3-1/4" 3-Sided Trim Kit in Black Powder Coat (30-3/8" h x 40-1/4" w)
	1135TSBEN	Edgemont Single Door - Brushed Nickel with Black Trim (31-7/8" h x 41-7/8" w)
	1135TSBEZ	Edgemont Single Door - Bronze with Black Trim (31-7/8" h x 41-7/8" w)
	1140FSB	4" 4-Sided Trim Kit in Black Powder Coat (32-1/2" h x 41-1/2" w)
	1140FSN	4" 4-Sided Trim Kit in Plated Brushed Nickel (32-1/2" h x 41-1/2" w)
	1140FSPN	4" 4-Sided Trim Kit in Nickel Powder Coat (32-1/2" h x 41-1/2" w)
	1140FSZ	4" 4-Sided Trim Kit in Bronze Powder Coat (32-1/2" h x 41-1/2" w)
	1149EDV	Edgemont Double Door - Vintage Iron (34-1/4" h x 41-7/8" w)
	1149EDZ	Edgemont Double Door - Bronze (34-1/4" h x 41-7/8" w)

ACCESSORIES	Model	Description
	1156CLA	Colinear Adaptor Kit
	1195CFK	Circulating Fan Kit
	1265WSK	Wall Switch Kit
	1270RBK	Remote Blower Kit
	1506DRK	Decorative Rock Kit (for use with the 1101DWK Pebble Beach Fire)
	GV60PAK	Power Adaptor Kit

MODEL/FUEL	Model	Fuel	Max. Input BTU/hr	Min. Input BTU/hr	EnerGuide Rating*	Max. Output* (w/out fan) BTU/hr
	1100IN	NG	28,000	13,000	69.12%	20,720
	1100IP	LPG	28,000	13,000	69.12%	20,720
	1150ILN	NG	30,000	16,000	70.95%	22,857
	1150ILP	LPG	30,000	16,000	70.95%	22,857

Fireplace Safety - Use Radiant Heat Safely

Fireplace surfaces, in particular the glass viewing window, are extremely hot during operation and will remain hot for a period of time after the fireplace is turned off. Contact with the hot glass can cause severe burns. Close adult supervision is required if there are young children, or at-risk individuals in the house. Included with your purchase, a Valor Barrier Screen is recommended at all times. Install an approved aftermarket safety gate to keep toddlers, young children and at-risk individuals a safe distance from the fireplace. For more information please visit www.valorfireplaces.com/safety.

Certified to ANSI Z21.88a-2012/ CSA 2.33a-2012 Vented Gas Fireplace Heater American National Standard CGA - 2.17-91 Gas Fired Appliances for use at High Altitudes

* EnerGuide Ratings and Outputs have been determined without a fan/blower, using the CSA P4.1-09 test method

Please Note: All product information is accurate at time of printing and is subject to change. Printed images may vary from actual product. Refer to the H5 Series engine manuals for product installation. For more information visit valorfireplaces.com



valor SMARTFIRE SYSTEM

LUXURY. EFFICIENCY. QUALITY. CONVENIENCE. HEAT.



VALOR COMFORT CONTROL

Standard with purchase, the Valor Comfort Control manages your heating needs with convenience, reliability and simplicity. Valor's touch button handset ignites the pilot with ease, adjusts flame levels as desired and has programmable options including room temperature control. Eco-friendly in design, your pilot light will automatically turn off if inactive for over 5 days, saving energy (especially in summer months) and lowering overall home heating costs.



THE COMFORT ZONE

Pumping forced heat through your entire home is often inefficient. Targeting specific areas that you frequent the most is more economical and efficient in the long run. Zone heating with a Valor requires no ducting or forced air, delivering the perfect blend of radiant and convective warmth – where you want it, when you want.



RADIANT WARMTH

Like heat from the sun, Valor fireplaces distribute radiant warmth directly to your living space. Radiant heat satisfies human comfort needs, using up to 25% less energy compared to traditional forced air systems. Valor warmth efficiently replaces the chill from cold windows and doors, providing steady, even heat to objects in the room. Backed with a powerful secondary heat exchanger that circulates warm air through convection, the H5 is an energy efficient, heater-rated fireplace.



HEAT DURING A POWER FAILURE - NO POWER, NO PROBLEM

If the power fails in the winter your home can get cold fast. Valor fireplaces are fully functional heaters that don't use electricity. Our fireplaces provide the perfect mixture of radiant and convective heat reducing the need for a fan. No power, no problem with Valor.



BURN CLEAN, ENGINEERED GREEN

Natural gas is the cleanest fireplace fuel you can burn, with the lowest particulate levels and lowest levels of greenhouse gases. Valor specializes in the design of cost effective, heat solutions for your home.