



Wood and gas products



Docomundo.com



Made for living

Quality in every detail

has been a Scan creed since the company was started in Denmark in 1978. From the beginning we built a strong culture based on the Danish aesthetics tradition, in which good design and intelligent features are the focus.

By using Danish designers we ensure that our products always have the same mechanisms that are the reason for Denmark's leading position in design and innovation.

That is why they say that "to furnish your home with a Scan makes a difference".

Welcome to the Scan world and this catalogue introducing our products for the season.

Purest

Clean Burn

Engineered to exceed the strictest international regulations to protect people and the environment.

Award Winning Design

Scan has received numerous awards over the years and continues to gain recognition for design excellence as the Danish design leader in our industry.

Quality – 5 Year Warranty

World Class quality stoves and inserts designed, manufactured and assembled in Denmark and the USA since 1978.



contents

| | |
|----------------------------|----|
| Scan design philosophy | 4 |
| Scan Anderson 10 | 6 |
| Scan Anderson 10 soapstone | 8 |
| Scan DSA 4 | 10 |
| Scan DSA 5 | 12 |
| Scan 45i | 14 |
| Scan 65i | 16 |
| Scan 70i | 18 |
| Scan burner treatments | 20 |
| Scan liner options | 21 |
| Scan technical data | 22 |
| Scan accessories | 27 |



Happiness



Just as a Scan wood-burning stove covers man's basic need for warmth, it also helps to create a warm and cosy atmosphere in the home. Basking in the warmth and enjoying dancing flames behind the large glass door is the ultimate in relaxation and pleasure, which is why a Scan wood-burning stove or insert quickly becomes the family's favorite place to gather.

Design

Scan AS has considerable experience in designing heating furniture. Simple, clean lines are the mark of good Danish design and this makes Scan one of the world's bestselling wood-burning stoves. Distinguished designers have been involved in creating the stoves' appearance as well as how they operate, which is why Scan stoves are so easy to use. Emphasis has been placed on the size of the glass and the efficiency of the air wash system so that everyone can enjoy the sight of the fire burning with all its might.

Innovation

Scan AS is a well-known pioneer in the design, functionality, combustion process and environmental consideration that go into the development their wood-burning stoves. The company's own R&D department with high-tech testing facilities, skilled engineers and many years of experience has made Scan one of the industry's largest creative operators in Europe. Creativity, innovation and the courage to go our own way has led to Scan's unique patented clean burn system.

Environment

One of our objectives is to develop wood-burning stoves and inserts that burn cleaner and more economically than any other product in relation to the environment. Heating with wood is a sustainable and economical form of energy, and if the stove is designed right, you will save on your fuel bills. At our own testing facilities, we are constantly working on increasing burn efficiency and meeting the most stringent of industry requirements. As a result, Scan stoves are among those that have earned the most approvals worldwide.



578-009

A number of our products also carry the official Nordic Eco-label: "The Swan". This Eco-label guarantees that the products are among the cleanest burning products on the market, ensuring that the products are of a high quality. For more information, see www.ecolabel.dk.

Safety



Quality

Top quality is what defines Scan. All Scan stoves are made in Denmark and the USA from the best raw materials and go through a thorough final inspection before they are available for purchase. Clever details such as cool touch handles, efficient air wash system and simple controls make lighting the fire and heating your home much easier. We hope you get a lot of pleasure out of your Scan wood-burning stove or insert.

The fact that a Scan wood-burning stove or insert is approved is your guarantee that it's been tried, tested and inspected. Every single product that leaves the factory has been tested for both safety and performance. So we're more than happy to offer a five-year guarantee.

Your selected authorized Scan dealer can provide you with additional technical information regarding installation, and all aspects of pre and post sales service. See also www.scan.dk

- Maximum heat output 52,000 BTU/hr
 - Log Length up to 20"
 - Heating capacity up to 1,800 sq.ft.
- The Scan Andersen 10 incorporates the latest system in clean combustion technology, is gentle on the environment, is economical with fuel and has optimally clear glass.*

Scan
Andersen 10



New technology in contemporary designs

The Scan Andersen 10 cast iron stove features gently curved sides and front that will blend in with any room. Featuring one of the largest fire viewing areas for a stove it's size, the Scan Andersen 10 offers the perfect blend of aesthetic charm and efficiency.



Scan Andersen 10

Features

- Industry leading efficiency achieved using Skamol™ lined firebox
- Standard ash pan & shaker grate
- Top or rear vent
- Requires ember floor protection only
- 5 year limited warranty

Options

- Fresh air kit
- Nordic soapstone top (top or rear vent) (shown on page 27)



- Maximum heat output 52,000 BTU/hr
 - Log Length up to 20"
 - Heating capacity up to 1,800 sq.ft.
- The Scan Andersen 10 soapstone incorporates the latest system in clean combustion technology, is gentle on the environment, is economical with fuel and has optimally clear glass.*

Scan Andersen 10



The warmth of soapstone

The Scan Andersen 10 soapstone and cast iron stove features gently curved sides and front that will blend in with any room. Featuring one of the largest fire viewing areas for a stove it's size, the Scan Andersen 10 offers the perfect blend of aesthetic charm, gentle heat, and efficiency.



Scan Andersen 10 with soapstone

Features

- Industry leading efficiency achieved using Skamol™ lined firebox
- Standard ash pan & shaker grate
- Top or rear vent
- Requires ember floor protection only
- 5 year limited warranty

Options

- Fresh air kit
- Nordic soapstone top (top or rear vent) (shown on page 27)



- *Maximum heat output 40,000 BTU/hr*
- *Log Length up to 16"*
- *Heating capacity up to 1,400 sq.ft.*

Now it is easy to turn that cold masonry fireplace into an efficient heater

Scan DSA 4



Turn that cold masonry fireplace into an efficient heater

The Scan DSA 4 insert offers the same advanced technology as our freestanding stoves, which ensures optimal efficiency and very low emissions.



Scan DSA 4 shown with small four-sided surround

Features

- At least a 75% thermal efficiency rating complying with IRS tax guidelines for a consumer tax credit of up to \$300 (US only)
- Lowest recorded emissions for a non-catalytic wood insert
- Industry leading efficiency achieved using Skamol™ lined firebox
- Air-washed glass
- Patented Scan door latch system
- 5 year limited warranty

Options

- Two 3-sided surround panel kits (29”H x 42”W), (32”H x 46”W)
- Two 4-sided surround panel kits (22 3/4”H x 25 3/4”W)(shown above) (22 3/4”H x 31 1/2”W)

- Maximum heat output 50,000 BTU/hr
- Log length up to 20"
- Heating capacity up to 1,800 sq.ft.

The guillotine door is opened using a simple wooden handle, and the combustion system has been proven efficient and clean.

Scan DSA 5



Designer:
Henning Krog
Iversen



The possibilities are endless

The Scan DSA 5 takes center stage with its impressive features, including a curved glass guillotine door and tall, sleek design. The efficient and environmentally friendly combustion is your guarantee of a clean and pleasant indoor climate.



Scan DSA 5 shown with black paint

Features

- Air-washed glass
- 180 degree fireview
- Requires ember floor protection only
- Patented Scan guillotine door system
- Pre-baked finish for enhanced durability
- 5 year limited warranty

Options

- Stainless steel pipe cover (15 3/4" & 19 5/8")
- Choice of stainless steel or black paint

- Maximum heat input 33,000 BTU/hr
- Heating capacity up to 1,500 sq.ft.
- Steady State Efficiency up to 82%

Modern design and a myriad of options makes this fireplace insert the perfect addition to any hearth

Scan 45i



Scan 45i (Direct vent gas insert)

Setting the trend with the industry's first contemporary linear direct vent gas fireplace insert, the Scan 45i combines state of the art features with modern style.



Scan 45i shown with black powdercoat surround, black glass burner media and black burner riser

Features

- TruStart™ Ignition system (shown on page 27)
- Linear flush face design
- Top mounted halogen accent lights
- IPI electronic ignition w/ battery back up
- 120 CFM fan with manual or thermostat operation

Options

- 3 Reflective glass liners: Clear Mirror, Black Reflective, and Black Decorative (shown on page 21)
- 3 Burner treatments: Black Starfire glass, Clear/White Starfire glass, and Tumbled Stones (shown on page 20)
- Black Riser Burner Kit
- 2 Surrounds: Black Powder Coat on Black Powder Coat and Black Powder Coat on Stainless Steel

- Maximum heat input 28,000 BTU/hr
- Heating capacity up to 1,300 sq.ft.
- Steady State Efficiency up to 82%

*Turn your fireplace into a sophisticated source of heat in the blink of an eye.
Shown below with optional river rock and corduroy panel packages*

Scan 65i



Scan 65i (Direct vent gas insert)

Turn your existing fireplace into a sophisticated source of heat in the blink of an eye. The Scan 65i delivers warmth to your home without disturbing your existing fireplace. It also immediately creates an uncommonly modern ambiance only available from Scan.



Scan 65i shown with stainless steel surround

Features

- Unique "flat screen" design with unparalleled "Fire on the Floor™" technology
- Mantel heat shield (shown on page 22)
- 50% heat control turn-down
- Variable speed blower with manual override (60-125 cfm)
- 5 year limited warranty

Options

- Choice of five interior panel kits (shown on page 21)
- Remote control (shown on page 27)
- Choice of two surround colors (Black Powder Coat or Stainless Steel)
- Choice of two surround sizes (40"W x 27"H, 40"W x 28"H)
- Choice of five flame picture packages (shown on page 20)

- Maximum heat input 38,000 BTU/hr
- Heating capacity up to 1,700 sq.ft.
- Steady State Efficiency up to 82%

Sliding glass front provides the ultimate clean face appearance. Shown below with optional clear/white glass and reflective panel packages

Scan 70i



Scan 70i (Direct vent gas insert)

Known for its reliability and sleek, modern styling, the Scan 70i fits the trend toward minimalistic interior design. The Scan 70i delivers warmth to your home without disturbing your existing fireplace. It also immediately creates an uncommonly modern ambiance only available from Scan.



Scan 70i shown with black powder coat surround

Features

- Unique "flat screen" design with unparalleled "Fire on the Floor™" technology
- Mantel heat shield (shown above)
- 50% heat control turn-down
- Variable speed blower with manual override (60-125 cfm)
- 5 year limited warranty

Options

- Choice of five interior panel kits (shown on page 21)
- Remote control (shown on page 27)
- Choice of two surround colors (Black Powder Coat or Stainless Steel)
- Choice of two surround sizes (44"W x 31"H, 44"W x 32"H)
- Choice of five flame picture packages (shown on page 20)

Burner Media

Quickly transform your
Scan 45i, 65i or 70i gas insert
to fit any decor with our hand
crafted burner packages.



Ceramic fiber logs (65i & 70i)



Tumbled stones (45i, 65i & 70i)



River rocks (65i & 70i)



Black glass (45i, 65i & 70i)



Clear/White glass (45i, 65i & 70i)

Liner Options

Our hand-crafted interior panel packages are proof that we will stop at nothing to create the most attractive and authentic looking gas insert you can buy.



Clear mirror glass panel kit (45i)



Reflective glass panel kit (65i & 70i)



Border brick kit (65i & 70i)



Black reflective glass (45i)



Black corduroy panel kit (65i & 70i)



Antique brick kit (65i & 70i)



Black decorative glass panel kit (45i)



Grey corduroy panel kit (65i & 70i)

| | | | |
|-------------------------------------|---|---|---|
| |  |  |  |
| Model | Scan Andersen 10 | Scan DSA 5 | Scan DSA 4 |
| Combustion Technology | Non-Catalytic Clean Burn | Non-Catalytic EPA Exempt | Non-Catalytic Clean Burn |
| Construction | Cast Iron | Steel | Steel |
| Height | 35" | 65" | 21 1/4" |
| Width | 26 5/8" | 30 1/2" | 23 7/8" |
| Depth** | 16" | 24 1/2" | 18 1/4" |
| Weight | 310 lbs. | 460 lbs. | 169 lbs. |
| Flue Size | 6" | 6" | 6" |
| Minimum Hearth Dimensions (US only) | 39 1/8" W x 32" D | 29 1/2" W x 38" D | |
| Height to Top of Flue | | | |
| Top | 36 1/2" | 65" | 22 7/8" |
| Rear | 33 1/2" | 57 1/8" | NA |
| Log Length | 20" | 20" | 16" |
| Maximum Heat Output ¹ | 52,000 BTU/hr | 50,000 BTU/hr | 40,000 BTU/hr |
| Heating Capacity ² | up to 1,800 sq.ft.**** | up to 1,800 sq.ft. | up to 1,400 sq.ft. |
| Efficiency | 64%***** | EPA Exempt | over 75%***** |
| EnerGuide Rating ³ | | | |
| Emissions | 3.13 grams/hr | EPA Exempt | 1.1 grams/hr |
| Burn Time | up to 8 hours | up to 8 hours | up to 8 hours |
| Clearance-Top Vent | | | |
| Rear | 9 1/2" | 3" | 9 1/2" |
| Side | 11" | 17" | 11" |
| Corner | 8" | 9" | 8" |
| Rear*** | | | |
| Side*** | | | |
| Corner*** | 4" | | 4" |

1 Maximum Heat Output based on kg of dry wood burned per hour.

2 Heating Capacity and Maximum Burn Time will vary depending on design of home, climate, wood type and operation

3 EnerGuide is a Government of Canada rating system that provides consumers with comparative information on the energy performance of energy-using products sold in Canada.

** Depth is overall depth with ashlip and smoke outlet included. Add 2" to depth for Canada.

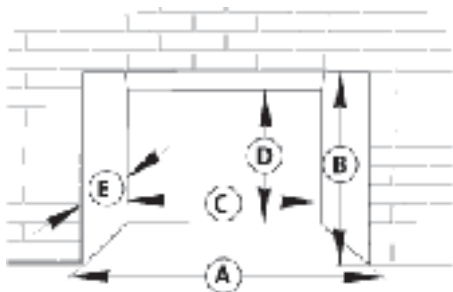
*** Clearances with double wall insulated chimney connector

**** Rear exit installation up to 900 sq.ft.

***** Thermal efficiency rating complies with IRS tax guidelines

***** Steady State Efficiency

| | | |
|--|---|---|
|  |  |  |
| Scan 45i | Scan 65i | Scan 70i |
| Gas | Gas | Gas |
| Direct Vent | Direct Vent | Direct Vent |
| Steel | Steel | Steel |
| 20 1/2" | 18 3/4" | 22 5/8" |
| 32 1/4" front 20 1/2" back | 30 1/2" front 19" back | 35 1/2" front 22 7/8" back |
| 15" | 15" | 16" |
| 150 lbs. | 140 lbs. | 178 lbs. |
| 3 x 3 | 3 x 3 | 3 x 3 |
| see page 24 | see page 30 | see page 31 |
| NA | NA | NA |
| NA | NA | NA |
| NA | NA | NA |
| 33,000 BTU/hr | 28,000 BTU/hr | 38,000 BTU/hr |
| up to 1,500 sq.ft. | up to 1,300 sq.ft. | up to 1,700 sq.ft. |
| up to 82%***** | up to 82%***** | up to 82%***** |
| 68% | 62% | 64% |
| NA | NA | NA |
| NA | NA | NA |
| NA | NA | NA |
| NA | NA | NA |
| NA | NA | NA |
| NA | NA | NA |
| NA | NA | NA |



Minimum Fireplace Dimensions (DSA 4)

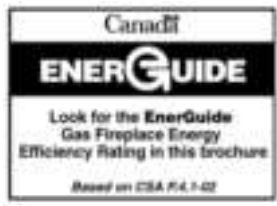
- A: Front Width* 25"
- B: Front Height 21 3/4"
- C: Rear Width 17 3/4"
- D: Rear Height 16"
- E: Depth 15 3/4"

*Note: Width dimension accommodates clearance for surround attachment to the front of the firebox

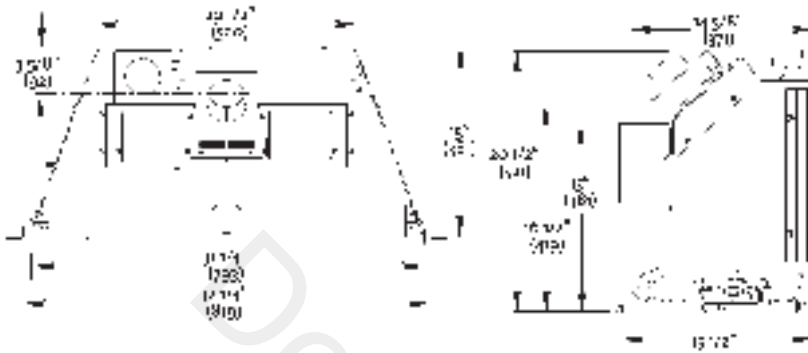
Clearances

- (measured from centerline and hearth)
- 1" Side Trim - 16"
- Side Room Wall - 24"
- 9 1/2" Mantel - 49 1/2"
- 1" top trim 37"
- Hearth protection - 16" with 7" elevated hearth

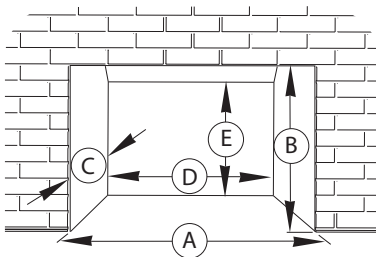
Consult owners manual for additional clearance specifications



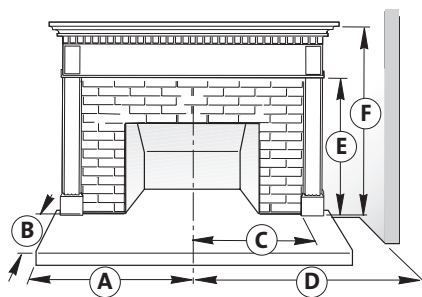
Scan 45i (Direct vent gas insert)



Minimum fireplace requirement



| | | |
|----|--------------------------|-------|
| A* | Minimum opening width | 32.5" |
| B | Minimum opening height | 20.5" |
| C | Minimum fireplace depth | 15" |
| D* | Minimum back wall width | 21" |
| E | Minimum back wall height | 17" |

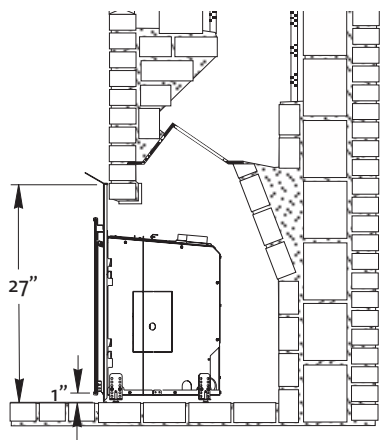
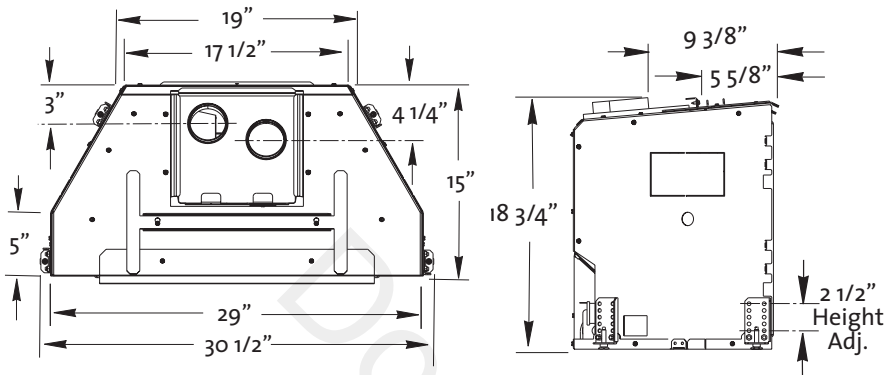


Minimum clearances to combustible material

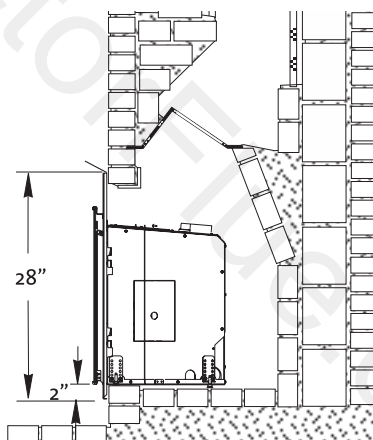
| | | |
|---|-------------------------------|--------|
| A | Hearth width from centerline | 18" |
| B | Hearth depth | 18" |
| C | Side trim from centerline | 21.25" |
| D | To side wall from centerline | 25.25" |
| E | To top trim from hearth | 45" |
| F | To 11 1/2" mantel from hearth | 53.5" |

Consult manual for reduced clearances

Scan 65i (Direct vent gas insert)



Flush Hearth

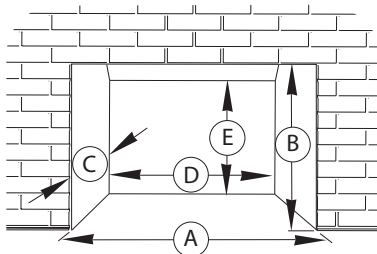


Raised Hearth

Adjustable riser brackets allow use of two different surround sizes to accommodate a variety of fireplace configurations.

Scan 65i w/40"W x 27"H surround

Scan 65i w/40"W x 28"H surround

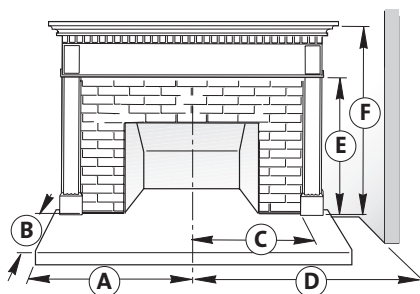


| | | | |
|----|--------------------------|-----|-----|
| A* | Minimum opening width | 31" | 31" |
| B | Minimum opening height | 21" | 22" |
| C | Minimum fireplace depth | 16" | 16" |
| D* | Minimum back wall width | 19" | 19" |
| E | Minimum back wall height | 20" | 21" |

* Subtract 1" if leg leveler brackets are not used

Scan 65i w/40"W x 27"H surround

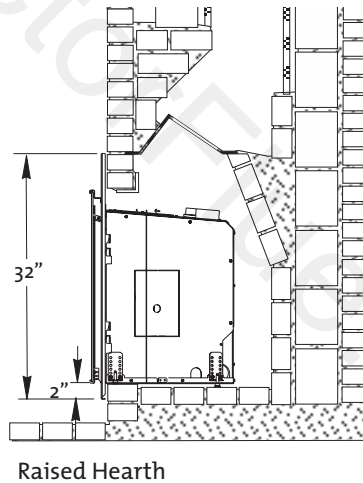
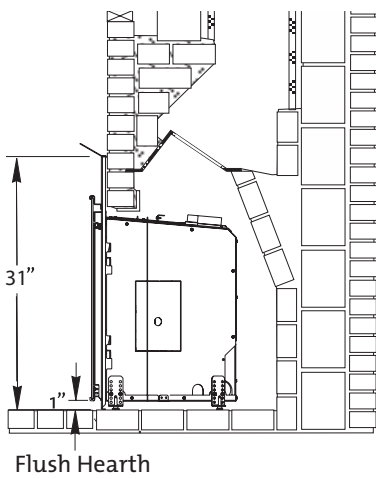
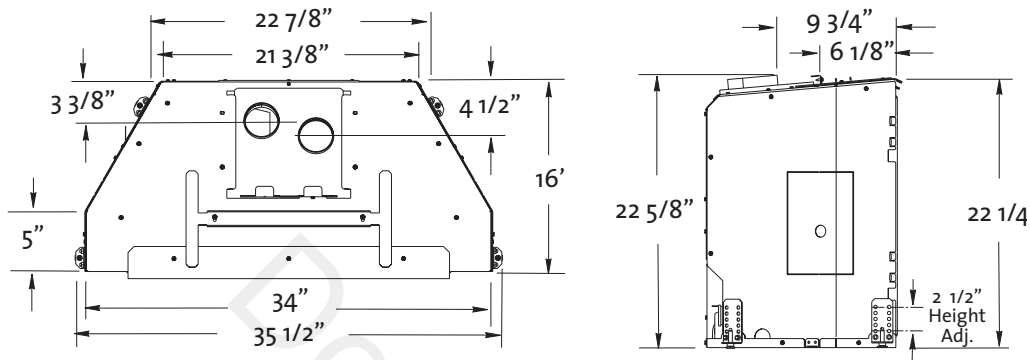
Scan 65i w/40"W x 28"H surround



| | | | |
|-----|------------------------------|-----|-----|
| A | Hearth width from centerline | 18" | 18" |
| B | Hearth depth | 16" | 16" |
| C | Side trim from centerline | 21" | 21" |
| D | To side wall from centerline | 44" | 44" |
| E** | To top trim from hearth | 37" | 38" |
| F** | To 1 1/2" mantel from hearth | 43" | 44" |

** with included mantel heat shield

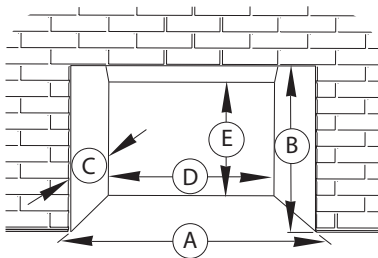
Scan 70i (Direct vent gas insert)



Adjustable riser brackets allow use of two different surround sizes to accommodate a variety of fireplace configurations.

Scan 70i w/44\"W x 31\"H surround

Scan 70i w/44\"W x 32\"H surround

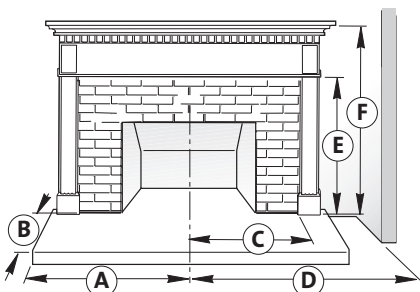


| | | | |
|----|--------------------------|-----|-----|
| A* | Minimum opening width | 36" | 36" |
| B | Minimum opening height | 25" | 26" |
| C | Minimum fireplace depth | 17" | 17" |
| D* | Minimum back wall width | 23" | 23" |
| E | Minimum back wall height | 24" | 25" |

* Subtract 1" if leg leveler brackets are not used

Scan 70i w/44\"W x 31\"H surround

Scan 70i w/44\"W x 32\"H surround



| | | | |
|-----|-------------------------------|-----|-----|
| A | Hearth width from centerline | 18" | 18" |
| B | Hearth depth | 16" | 16" |
| C | Side trim from centerline | 23" | 23" |
| D | To side wall from centerline | 46" | 46" |
| E** | To top trim from hearth | 44" | 45" |
| F** | To 11 1/2" mantel from hearth | 50" | 51" |

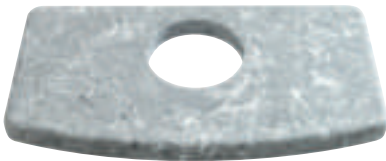
** with included mantel heat shield

Accessories

Little things to make your life a lot easier:

Nordic Soapstone Top

Add the accent of soapstone to your Scan Andersen 10. Continue to heat your home through the night as Nordic soapstone stores heat for many hours after the fire has gone out. Top or rear vent styles available. Top vent shown below.



Scan Andersen 10 soapstone top

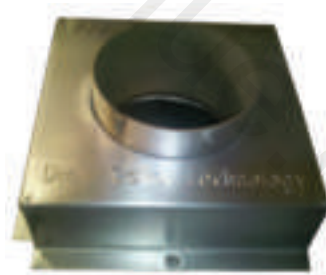
Remote Control

Operate your Scan gas stove or fireplace insert from the comfort of your couch.

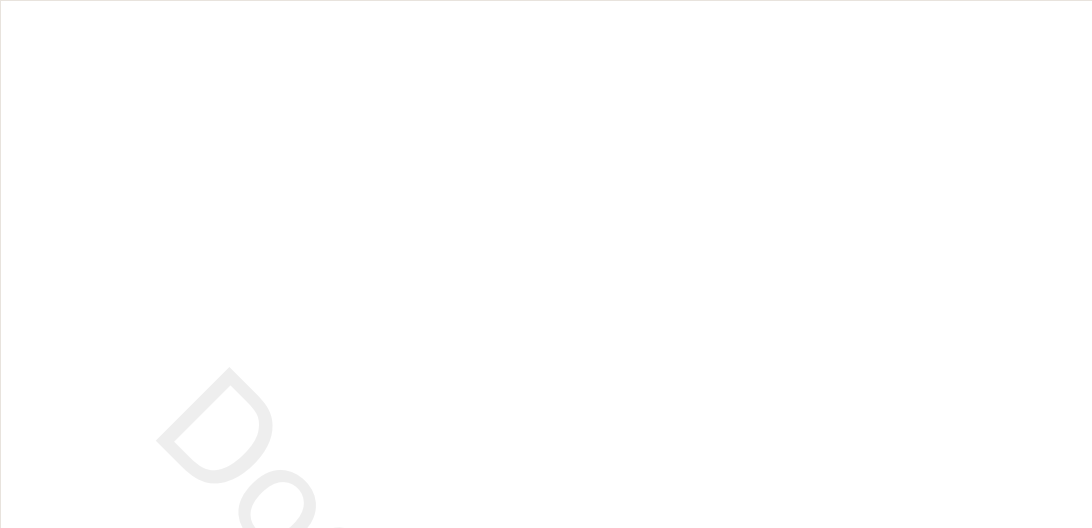


TruStart Ignition™

Designed with efficiency in mind, TruStart™ incorporates the gas IPI system with Scan Draw Collar Technology. The Draw Collar is a fully intergrated component designed to help induce draft during cold start up conditions while saving you up to 25% on fuel costs compared to using a traditional standing pilot.



Scan 45 i Draw Collar



DoctorFlue.com

Jøtul North America
55 Hutcherson Drive
Gorham, ME 04038

Scan constantly works to improve its products as much as possible. We reserve the right to make technical changes and change colors and accessories without prior notice. We would like to draw your attention to the fact that several wood-burning stoves in this catalogue are shown with extra accessories. See also www.scan.us

Wood and gas products

September 2011

