

Valcourt

The Fireplace of Your Dreams

www.valcourtinc.com





ctor Flue



Valcourt

The fusion of style,
ambiance, performance and
concern for the environment.

The Fireplace of Your Dreams

Contents

FP6 Montcalm



Decorative
Wood Burning Fireplace

p. 9

FP7 Antoinette



Clean Burning Decorative
Wood Fireplace

p. 13

FP11 Frontenac



Clean Burning Decorative
Wood Fireplace

p. 15

FP1 Manoir



Mid-efficiency Decorative
Wood Fireplace

p. 19

FP2 Beaumont



Mid-efficiency Decorative
Wood Fireplace

p. 21

FP5 Westmount



Mid-efficiency Decorative
Wood Fireplace

p. 23

Some changes may have been made to the products after the publication of this brochure. Valcourt reserves itself the right to modify its products without any obligation on its part.

 Some tax credits may apply to our appliances.
Visit www.valcourtinc.com/incentives.aspx for more details.



FP8 Saguenay



High Efficiency
Wood Fireplace

p. 27

FP9 Versailles



High Efficiency
Wood Fireplace

p. 29

FP10 Lafayette



High Efficiency
Wood Fireplace

p. 31

Options
Forced Air Distribution Kit
Gravity Kit

p. 32

Warranty

p. 33

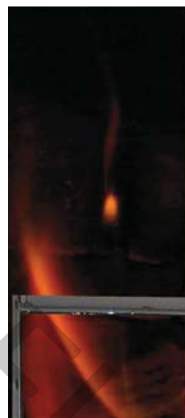
Technical Data

p. 34

Manufacturers,
brands and types
of approved
chimneys

p. 35

The Fireplace of your dreams



Decorative Wood Burning Fireplaces

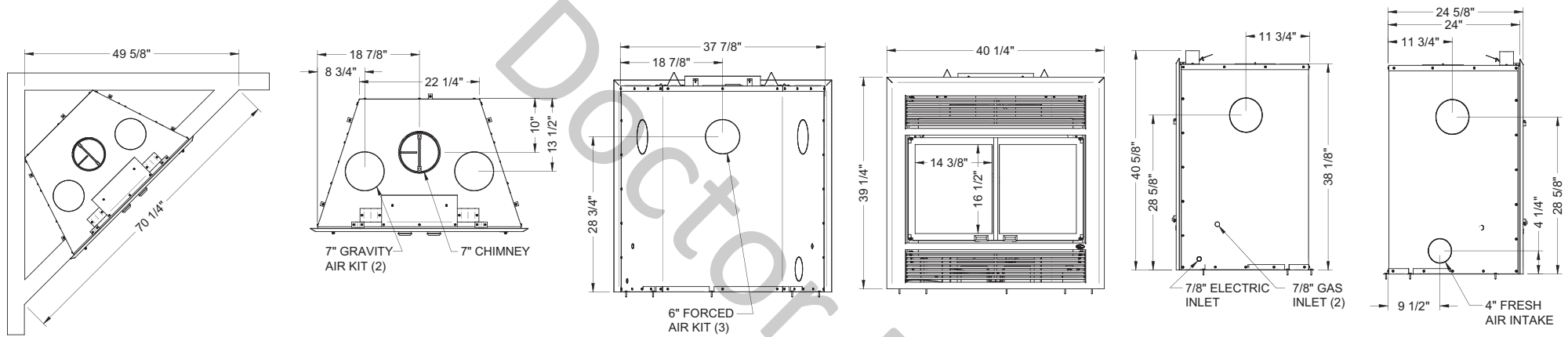


Decorative Flue



Marquis de Montcalm was the son of a nobleman. Ironic, isn't it, that the Montcalm fireplace by Valcourt is a fireplace for the budget conscious among us. Budget conscious and just plain smart, the Montcalm has the same heavy duty construction as the rest of the Valcourt line. The same standard firescreen door. The same gas log adaptability. The same great looks. What's the main difference? The glass door comes equipped with tempered glass. So leave it open and let it burn... Just beautiful!

FP6 - Montcalm



Features

- Firebox volume of 3.0 cu. ft.
- Black front
- Grey tempered glass doors
- Rigid fire screen doors
- Tilt up cast iron grate
- Moulded refractory bricks
- Requires a 7" chimney

Options

- Blower with variable speed control

This appliance is

 EPA
 exempt





Clean Burning Decorative Wood Fireplaces

Decorative Flue





Decorative wood burning fireplace with guillotine door and narrow overlap.



Decorative wood burning fireplace with guillotine door and narrow overlap.



Cast iron andirons

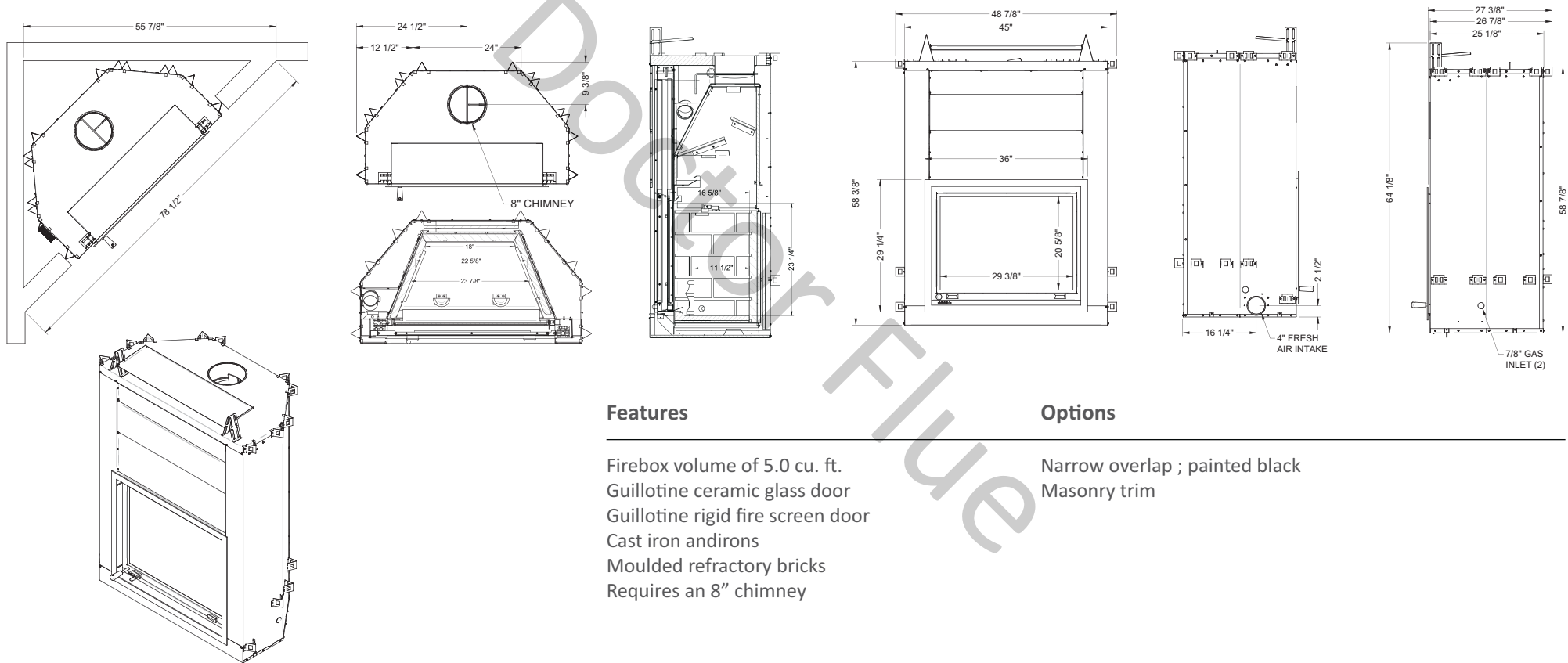
Dare to design... the fireplace of your dreams, while being environmentally friendly.

The US Environmental Protection Agency (EPA) initiated a voluntary program for manufacturers of decorative wood burning fireplaces to encourage manufacturers to produce clean wood-burning appliances that reduce air pollution.

The FP7-LM Antoinette wood fireplace already qualifies for phase II of that program which aims emission levels at or below the target of 5.1 g/kg (approximately 70 percent cleaner than unqualified models). Thus you can benefit from a product with low particulate emissions.

Moreover, another advantage of this Valcourt fireplace is its guillotine door that disappears to allow you to load wood on the fire or relax with the crackle of the open fireplace. The firescreen is also on a guillotine mechanism so you can close it when the ceramic glass door is open. Why Antoinette? Finally, a positive historical reference to the guillotine! The guillotine door and clean front gives you the flexibility to design your fireplace in any way that suits you. The Antoinette is a truly versatile fireplace and is all about giving you the ability to design your fireplace exactly how YOU want it to be.

FP7 - Antoinette



Features

- Firebox volume of 5.0 cu. ft.
- Guillotine ceramic glass door
- Guillotine rigid fire screen door
- Cast iron andirons
- Moulded refractory bricks
- Requires an 8" chimney

Options

- Narrow overlap ; painted black
- Masonry trim

This model is **EPA QUALIFIED** Under the LOW MASS Wood-Burning Fireplace Program **PHASE 2** EMISSION LEVEL



Clean Burning Decorative Wood Fireplace with guillotine door and arched masonry trim.



Clean Burning Decorative Wood Fireplace with guillotine door and straight masonry trim.



Clean Burning Decorative Wood Fireplace with guillotine door and straight narrow overlap.



* Herringbone



* Classic



* Contemporary



FP11 Frontenac
Clean Burning Decorative Wood Fireplace
with guillotine door and arched narrow overlap.



Cast iron andirons

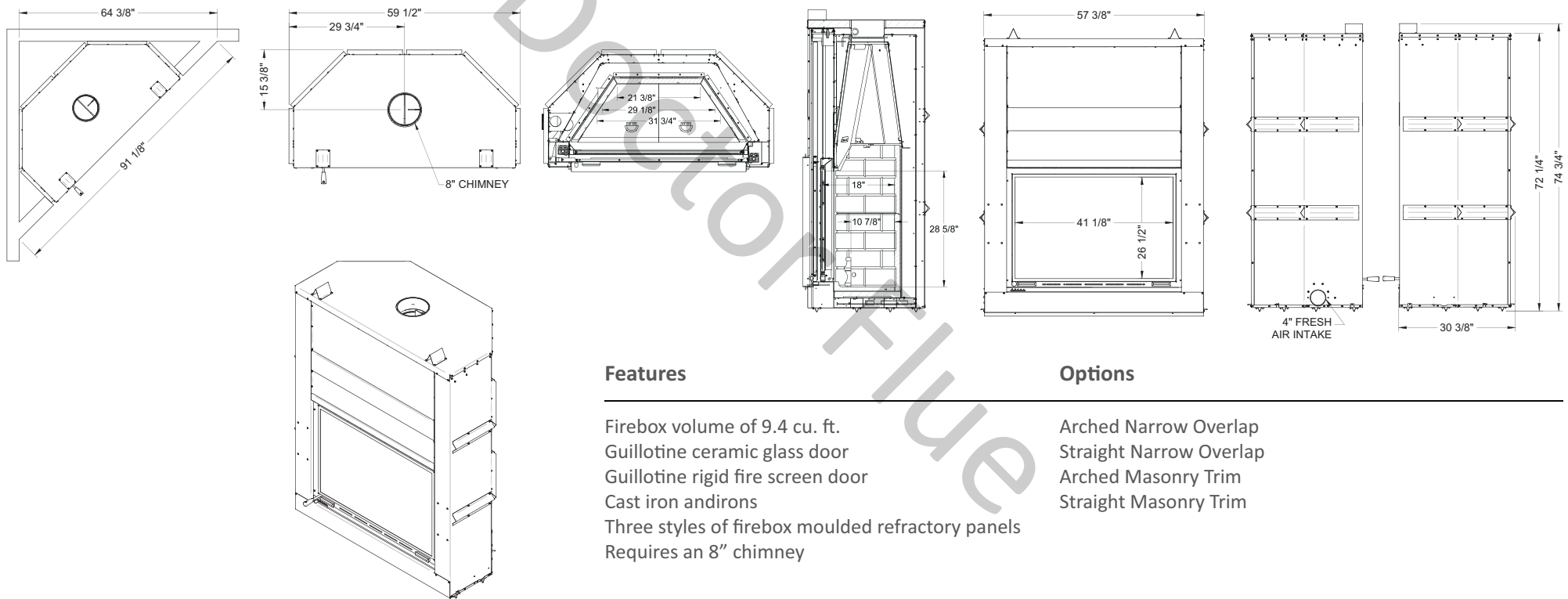
Dare to design... the fireplace of your dreams, while being environmentally friendly!

Frontenac is not only the name of a grand hotel located in the heart of Quebec City, Canada. It is also the largest fireplace of the Valcourt brand. Majestic and imposing, this bravery symbol of the Count of Quebec, who has fiercely defended the French colony, is quite appropriate to represent the enormous challenge overtaken when designing and manufacturing this fireplace. Exceptionally large, the FP11 Frontenac uses advanced technology to reduce air pollution. Indeed, the FP11 Frontenac already qualifies for Phase II of the US Environmental Protection Agency (EPA) voluntary program for manufacturers of decorative wood burning fireplaces.

With particulate emissions below 5.1 g/kg (which is approximately 70 percent cleaner than unqualified models), The FP11 Frontenac will surely give you elegance without compromising the quality of air.

Just like the FP7-LM Antoinette, the FP11 Frontenac has a guillotine door that disappears in the hearth, allowing you to easily load wood on the fire and have an unrivaled view of the flames. The firescreen is also equipped with a guillotine mechanism. You will thus enjoy an open fire in safety when the ceramic glass door is open. Finally, the bare front allows significant flexibility and creativity in the design of your interior décor.

FP11 - Frontenac



Features

- Firebox volume of 9.4 cu. ft.
- Guillotine ceramic glass door
- Guillotine rigid fire screen door
- Cast iron andirons
- Three styles of firebox moulded refractory panels
- Requires an 8" chimney

Options

- Arched Narrow Overlap
- Straight Narrow Overlap
- Arched Masonry Trim
- Straight Masonry Trim



* Herringbone Moulded Refractory Vermiculite Panel



* Classic Moulded Refractory Brick Panel



* Contemporary Moulded Refractory Brick Panel



Arched Narrow Overlap



Strait Narrow Overlap



Arched Masonry Trim



Straight Masonry Trim

This model is **EPA QUALIFIED** Under the LOW MASS Wood-Burning Fireplace Program **PHASE 2** EMISSION LEVEL



Mid-efficiency Wood Fireplaces





Decorative wood burning fireplace with classic style doors and large overlap.

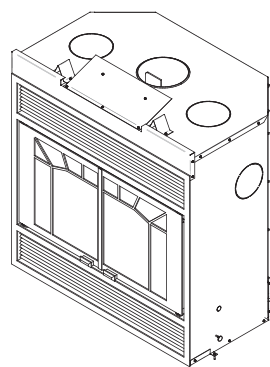
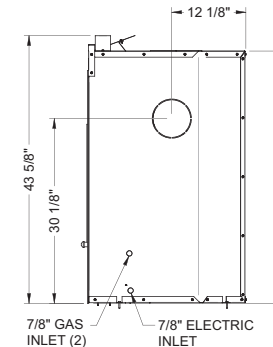
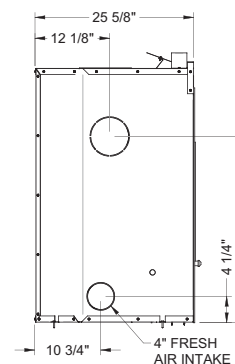
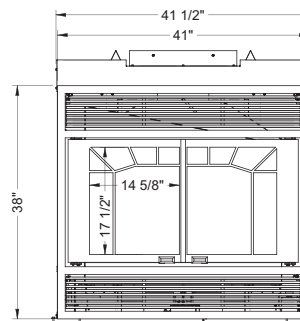
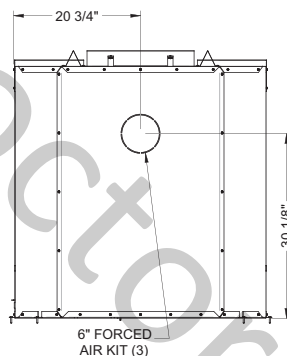
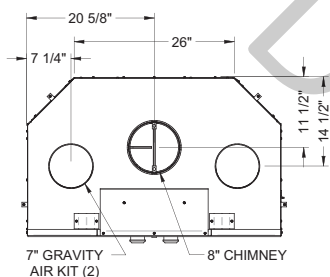
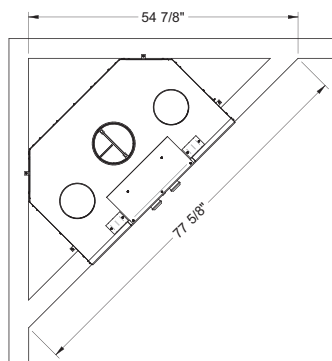


FP1 Manoir
Decorative wood burning fireplace with modern style doors and narrow brushed nickel plated overlap.

The Manoir is an up-to-date version of our original fireplace. The ceramic glass fireplace doors slide into each side of the fireplace in one smooth, easy motion. No positioning locks, no special tools, no sweat. Evidence that a Valcourt fireplace door is second to none. The doors make a Valcourt fireplace special but the quality doesn't stop there.

Each Valcourt fireplace is manufactured with heavy duty construction. How's that for your peace of mind. A solid luxury that will provide years of relaxation for you and your family.

FP1 - Manoir



Features

- Firebox volume of 4.25 cu. ft.
- Two styles of retractable ceramic glass doors
- Rigid fire screen doors
- Tilt up cast iron grate
- Moulded refractory bricks
- Thermostatically operated blower with variable speed control
- Requires an 8" chimney

Options

- Narrow overlap; painted black, antique brass plated or brushed nickel plated
- Large overlap; painted black
- Hot air gravity kit
- Forced air kit



Modern style doors



Classic style doors





FP2 Beaumont
Decorative wood burning
fireplace with modern style folding doors and narrow
brushed nickel plated overlap.



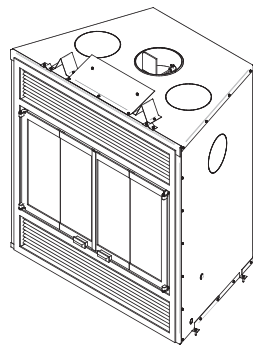
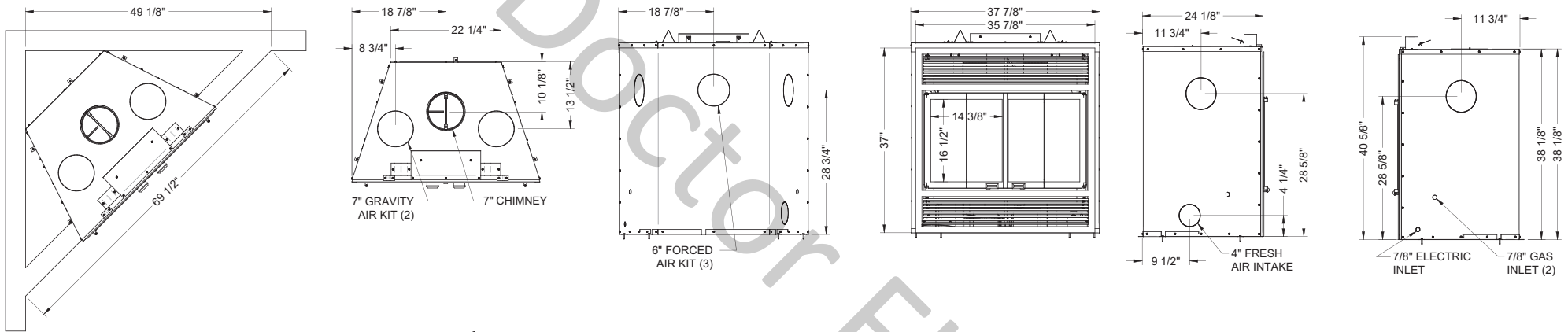
Decorative wood burning fireplace
with modern style folding doors
and large overlap.



Imagine yourself sitting on your sofa or perhaps in your bathtub, sipping your favorite beverage and watching the open fire as it dances, snaps and crackles in your Beaumont fireplace. What a delightful way to relieve yourself of the day's stress.

Ahhh... now doesn't that feel better?

FP2 - Beaumont



Features

- Firebox volume of 3.0 cu. ft.
- Two styles of ceramic glass doors
- Rigid fire screen doors
- Tilt up cast iron grate
- Moulded refractory bricks
- Thermostatically operated blower with variable speed control
- Requires a 7" chimney

Options

- Narrow overlap; painted black, antique brass plated or brushed nickel plated
- Large overlap; painted black
- Hot air gravity kit
- Forced air kit



Modern style doors



Modern style folding doors





Decorative wood burning fireplace with modern style folding doors and black narrow overlap.



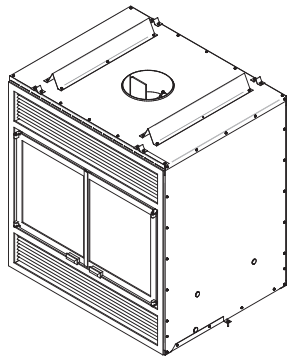
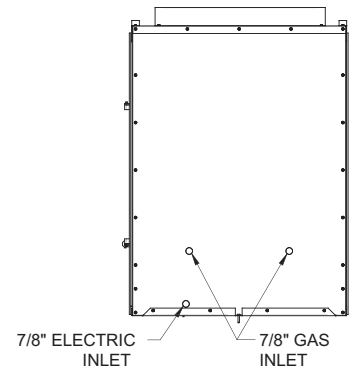
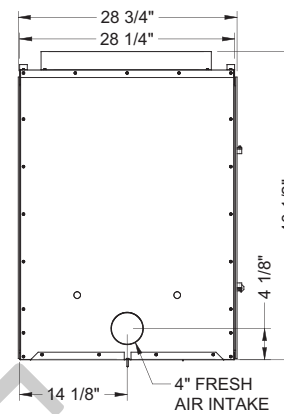
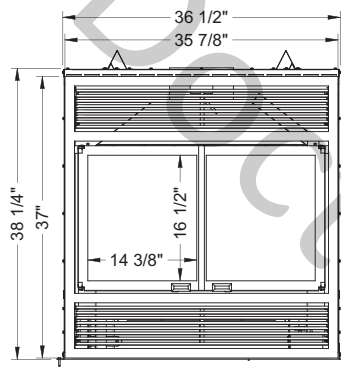
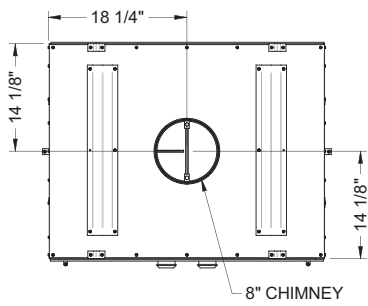
FP5 Westmount
Decorative wood burning
double sided fireplace.

So what's better than a Valcourt fireplace in one room? How about a Valcourt fireplace that has a face in two rooms at the same time. A double sided Valcourt fireplace. That is what the Westmount gives to the Valcourt line. Great in a master suite between the bedroom and bathroom. Very romantic. Or how about between a dining room and a living room? Or maybe between a dining room and a kitchen.

Whatever or wherever you desire a see-through fireplace, the Westmount is there for you.

Enjoy the fire wherever you may happen to be!

FP5 - Westmount



Features

- See-through fireplace
- Firebox volume of 3.5 cu. ft.
- Two styles of ceramic glass doors
- Second side with fixed ceramic glass
- Rigid fire screen doors
- Cast iron grate
- Moulded refractory bricks
- Requires an 8" chimney

Options

- Narrow overlap; painted black, antique brass plated or brushed nickel plated
- Large overlap; painted black
- Blower with variable speed control



Modern style doors



Modern style folding doors

This appliance is





High Efficiency Wood Fireplaces

Wood or Flue





High efficiency wood burning fireplace with traditional cast iron faceplate and brushed nickel plated door overlay.



High efficiency wood burning fireplace with contemporary cast iron faceplate and brushed nickel plated door overlay.

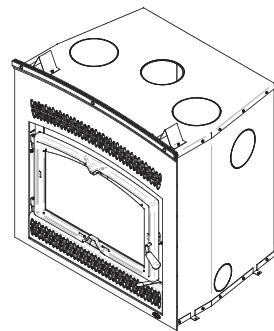
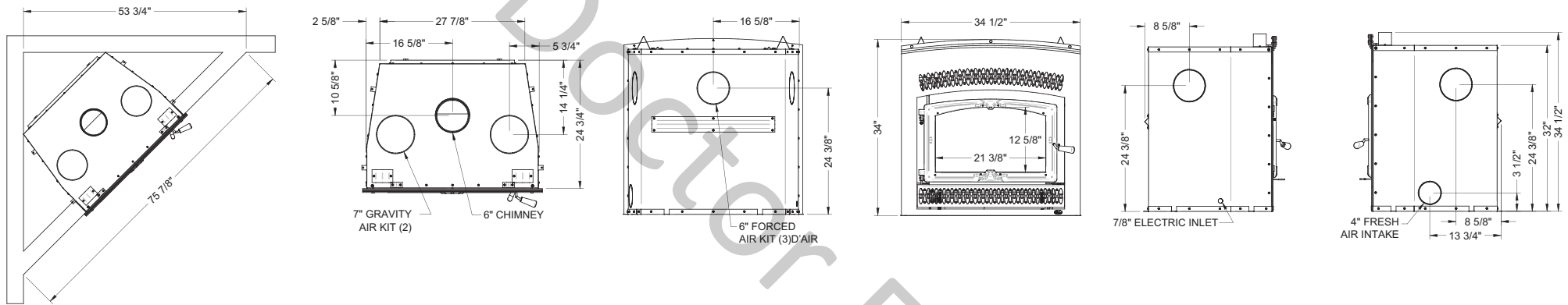


Cast iron andiron

The Saguenay fireplace has tons of features that make it the perfect choice. This fireplace is a superb heater. The natural flow heat ducts attach to the top of the fireplace and move the heat from the room where the fireplace resides to another totally different room in the house. Or consider tying the fireplace into your furnace's ducting system* and move the heat through the whole house. The door easily and smoothly folds back into the side of the fireplace. The Saguenay is a complete "chill out while you stay warm" fireplace.

On the aesthetic side, and always the Valcourt way, it features design versatility with three very different faceplates so you can choose which style would best suit your home. There is a very traditional looking cast iron faceplate, a far more contemporary cast iron faceplate and last but not least, a super modern steel faceplate. Three different styles and a fireplace that is... a superb heater.

FP8 - Saguenay



Features

- Firebox volume of 2 cu. ft.
- Controlled combustion
- Retractable cast iron door
- Cast iron andiron
- Moulded refractory bricks
- E.P.A. certified at 3.96 g/hr.
- Requires a 6" chimney

Options

- Cast iron door overlay; painted black, gold plated or brushed nickel plated
- Rigid fire screen
- Steel faceplate - painted black
- Traditional cast iron faceplate - painted black
- Contemporary cast iron faceplate - painted black
- Thermostatically operated blower with variable speed control
- Hot air gravity kit
- Forced air kit

*Certain local building codes may impose restrictions.

 Some tax credits may apply to our appliances. Visit www.valcourtinc.com/incentives.aspx for more details.





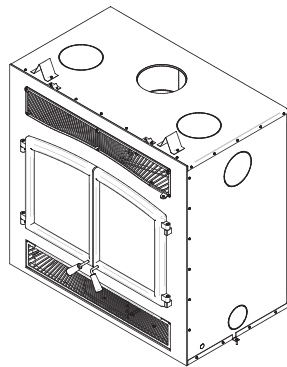
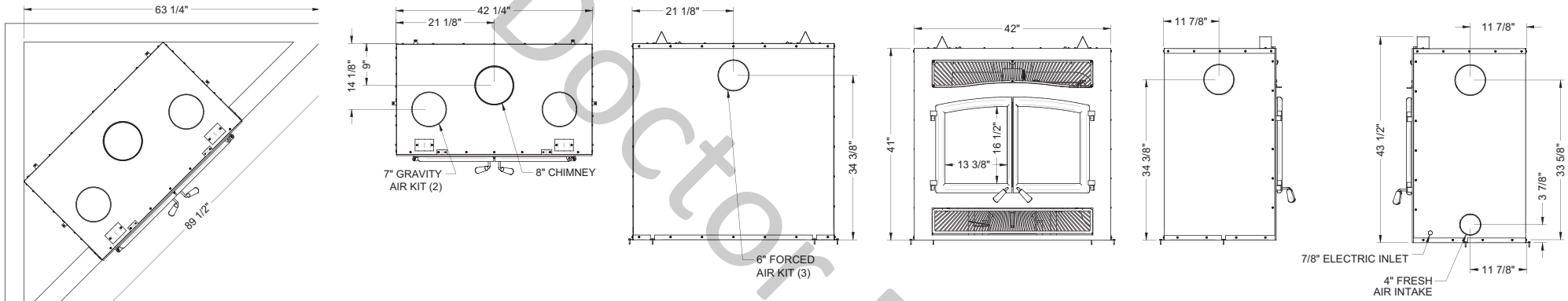
Cast iron andirons

At Valcourt, we think of our newly introduced Versailles fireplace as the “Duchess of all fireplace heaters”.

In fact, consider just how much heat this fireplace will generate and you will understand the nickname. The heat is “tremendous” and so is the fireplace itself with a ceramic glass door the size of which has never been seen in an EPA rated fireplace. With the Versailles fireplace, think glass door size and think...HEAT. Furthermore, like the FP8, the FP9 can be connected to your furnace’s ducting system*.

The palace at Versailles is a building of incredible beauty and grandeur. It has been home to the most influential people in French aristocracy over many centuries. We believe this palatial fireplace will warm both your heart and your home. Our Versailles zero clearance heater is truly a “Duchess among fireplaces”.

FP9 - Versailles




Features

- Firebox volume of 3.5 cu. ft.
- Controlled combustion
- Cast iron andirons
- E.P.A. Certified at 4.2 g/hr.
- Moulded refractory bricks
- Requires an 8" chimney

Options

- Cast iron door assembly; painted black (ordered and sold separately)
- Thermostatically operated blower with variable speed control
- Hot air gravity kit
- Forced air kit

*Certain local building codes may impose restrictions.

 Some tax credits may apply to our appliances. Visit www.valcourtinc.com/incentives.aspx for more details.





High efficiency wood burning fireplace with Victoria style faceplate and gold plated door overlay.

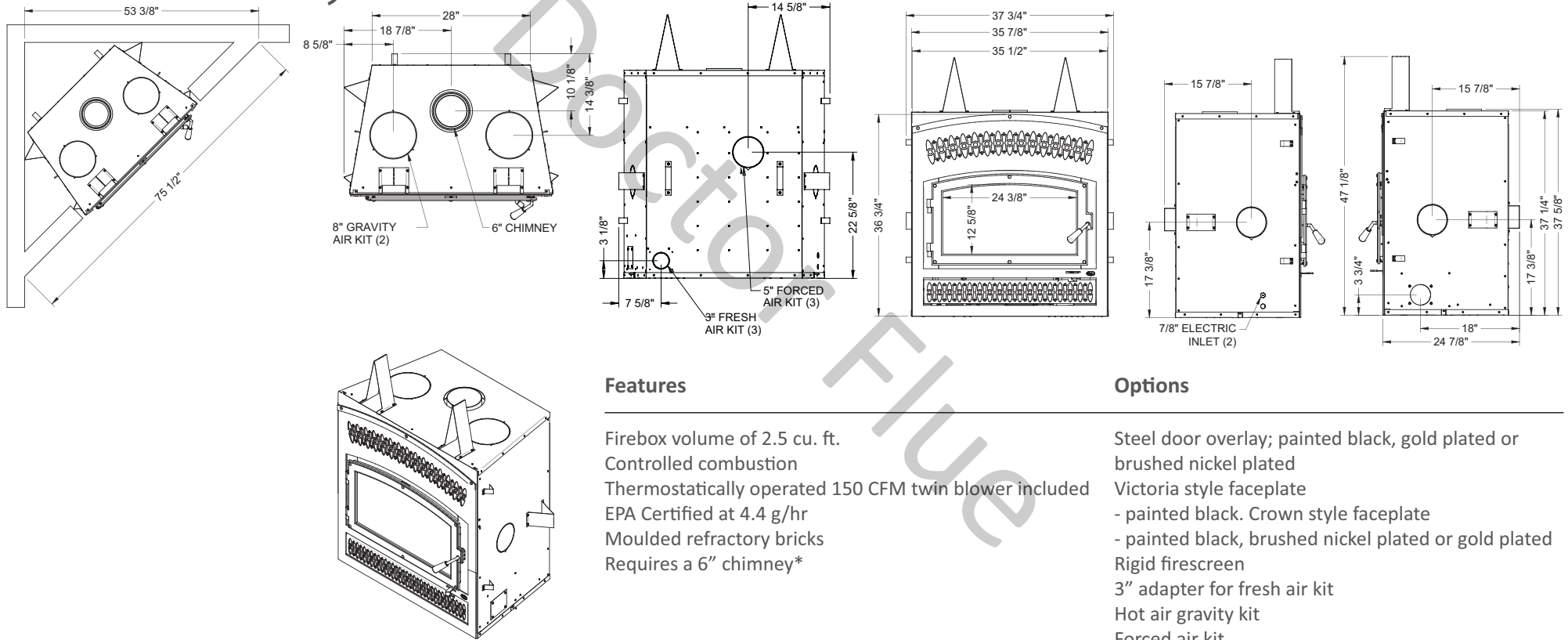


High efficiency wood burning fireplace with crown style faceplate and brushed nickel plated door overlay.



Lafayette, the French officer and hero of the American Revolution, inspired us to create our newest high efficiency fireplace. As the great general, Valcourt used its tactical skills in developing the Lafayette fireplace so it provides home heating with superb efficiency and elegance. Further to offering a revolutionary look, Lafayette meets the highest EPA emissions requirements, making it the fireplace of choice for the new generation of consumers who want to use wood as a renewable and clean source of heat.

FP10 - Lafayette



Features

- Firebox volume of 2.5 cu. ft.
- Controlled combustion
- Thermostatically operated 150 CFM twin blower included
- EPA Certified at 4.4 g/hr
- Moulded refractory bricks
- Requires a 6" chimney*

Options

- Steel door overlay; painted black, gold plated or brushed nickel plated
- Victoria style faceplate
- painted black. Crown style faceplate
- painted black, brushed nickel plated or gold plated
- Rigid firescreen
- 3" adapter for fresh air kit
- Hot air gravity kit
- Forced air kit

*This high efficiency wood burning fireplace may also be installed with a 7" chimney or with some brands of chimney. See owner's manual for more details.

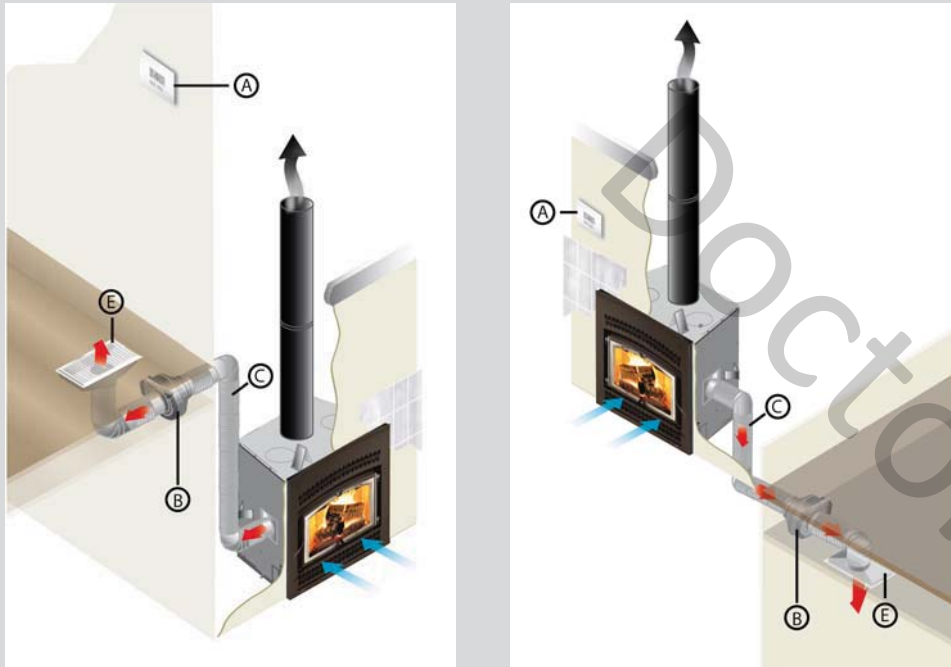
 Some tax credits may apply to our appliances. Visit www.valcourtinc.com/incentives.aspx for more details.

This appliance is
 **EPA** ^{<45} g/h
 & Washington State Approved

Options

EPA certified wood fireplaces generate a lot of heat. For the most part, they generate too much for the room where they are located. Therefore, you need to manage the excess heat and send it where it is needed. To provide a solution, our research and development laboratory has designed the Heat Management System, an innovative technology that allows the recovery of the heat produced during combustion and redirects it into distribution ducts to heat other areas in your home.

Forced Air Distribution Kit (Heat Management System)

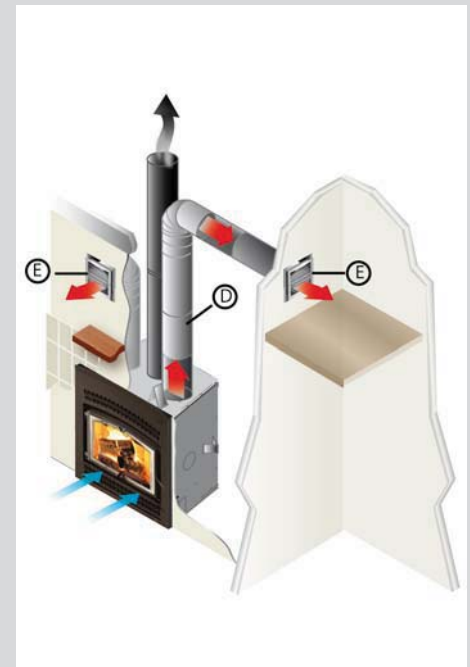


This system allows you to manage the heat distribution automatically. Using a wall thermostat, you can select the temperature you want to maintain in the room where the fireplace is located. Once the thermostat is satisfied, the excess heat is redirected to another room up to 50 feet (15 m) away from the fireplace using a 350 CFM blower. That way, you can enjoy a nice fire in your living room without the discomfort of excess heat generated by your Valcourt fireplace.

The system can also be used to supplement heat in a room remote from the fireplace. For this type of application, the thermostat needs to be positioned in the desired room and programmed with the temperature to be maintained. The system, now in "heat mode", will activate the blower as long as the temperature in the remote room is not achieved and that the fireplace has enough heat to distribute.

Valcourt offers you another way to distribute excess heat into your home with the help of a gravity kit.

Gravity Kit



The Gravity Kit allows you to block the upper fireplace louver in order to bring hot air into the same room as the fireplace, in adjacent rooms, or upstairs at a maximum distance of 10' (3 m). The minimum height of the hot air duct must be 68" (1.7 m) measured from the floor to the top of the hot air register.

A) Wall thermostat B) 350 CFM blower C) Hot air flexible pipe D) Hot air rigid pipe E) Air register

For more installation options or more details on the **Heat Management System** or the **Gravity Kit**, visit www.valcourtinc.com/heatmanagementsystem

Warranty



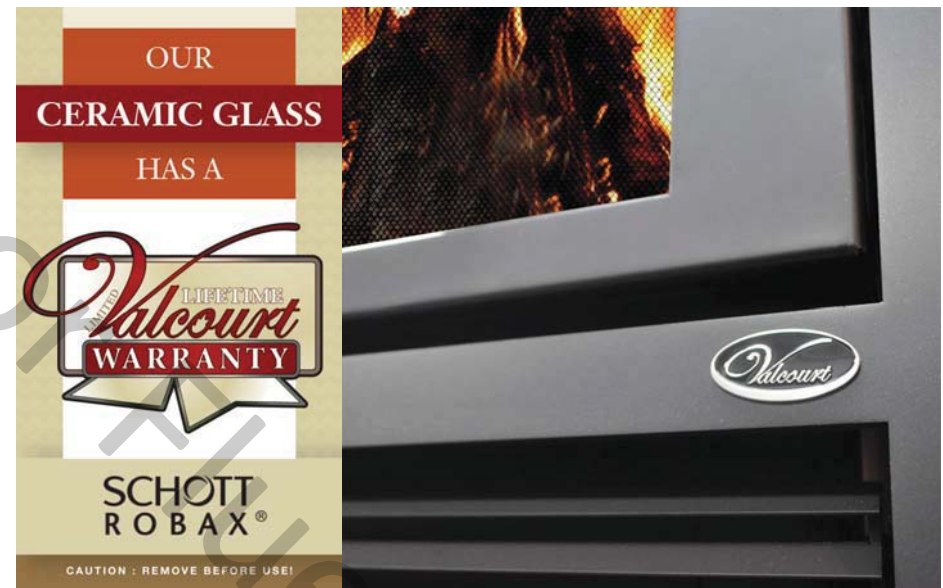
Valcourt Limited Lifetime Warranty on Robax Ceramic Glass

The VALCOURT-SCHOTT ROBAX system is one of the highest quality glass and heater product combination on the market. This allows VALCOURT to offer a Limited Lifetime Warranty on Robax ceramic glass for all VALCOURT appliances.

Conducted consumer studies identify that people want an unobstructed view of the fire, but without compromising safety. The glass “shield” is seen as the needed protection from the fire’s unpredictable aspects. VALCOURT chose the SCHOTT ROBAX solution delivering all of the benefits that a consumer wants out of a fire but without the risks associated to it.

Because the way the entire system works together (SCHOTT ROBAX ceramic glass and VALCOURT technology), it is the most efficient glass solution available in the market given its high IR transmission values and its high temperature resistance. A high IR transmission means that the heat produced inside the fire box is transferred through the glass more efficiently. The VALCOURT-SCHOTT ROBAX ceramic glass can withstand the highest temperatures of any glass on the market.

For more details go to: www.valcourtinc.com



DESCRIPTION	PARTS
•Welds of combustion chamber	LIFETIME
•Ceramic glass	LIFETIME
•Burn tubes	LIFETIME
•Plating	LIFETIME



Limited Lifetime

Technical Data



FP1 FP2 FP5 FP6 FP7 FP8 FP9 FP10 FP11

	FP1	FP2	FP5	FP6	FP7	FP8	FP9	FP10	FP11
Color	Black	Black	Black	Black	Black	Black	Black	Black	Black
Combustion technology	Non-Catalytic	Non-Catalytic	Non-Catalytic	Non-Catalytic	Non-Catalytic	Non-Catalytic	Non-Catalytic	Non-Catalytic	Non-Catalytic
Maximum recommended area (with forced air kit)	N/A	N/A	N/A	N/A	N/A	1900 sq. ft.	2800 sq. ft.	2000 sq. ft.	N/A
Heating capacity - BTU/hr., EPA test wood	N/A	N/A	N/A	N/A	N/A	36,900	69,500	30,500	N/A
Heating capacity - BTU/hr., seasoned cord wood	N/A	N/A	N/A	N/A	N/A	65,000	120,000	75,000	N/A
Emissions; weighted average according to EPA tests	N/A	N/A	N/A	N/A	N/A	3.96 g/h	4.2 g/h	4.4 g/h	N/A
Optimum efficiency	N/A	N/A	N/A	N/A	N/A	75%	75%	77%	N/A
Door opening dimensions (W x H)	32" x 19"	28 1/4" x 15 1/2"	28 1/4" x 14"	28 1/4" x 15 1/2"	33 1/2" x 22 3/4"	21 3/4" x 12 1/2"	30" x 13 1/4"	25 1/4" x 11"	41 1/8" x 26 1/2"
Firebox dimensions (W x D)	30" x 14 5/8"	26 1/4" x 14 1/4"	26 1/2" x 15"	26 1/4" x 14 1/4"	23 7/8" x 16 5/8"	22 1/2" x 14 3/8"	28" x 15"	21" x 18"	31 3/4" x 18"
Firebox volume (excluding andirons)	4.25 cu. ft.	3 cu. ft.	3.5 cu. ft.	3 cu. ft.	5.3 cu. ft.	2 cu. ft.	3.5 cu. ft.	2.5 cu. ft.	9.4 cu. ft.
Glass viewing area	534 sq. in.	495 sq. in.	572 sq. in.	495 sq. in.	632 sq. in.	277 sq. in.	475 sq. in.	275 sq. in.	1,090 sq. in.
Door type	Double, with steel frame	Double, with steel frame	Double, with steel frame	Double, with steel frame	Guillotine, with steel frame	Single, retractable with cast iron frame	Double, with cast iron frame	Single, with steel frame	Guillotine, with steel frame
Maximum log length	18"	16"	18"	16"	18"	16"	18"	21"	30"
Log positioning	East / West	East / West	East / West	East / West	East / West	East / West	East / West	East / West	East / West
Flue spigot diameter	8"	7"	8"	7"	8"	6"	8"	6"	8"
Minimum chimney height (from floor)	15'	15'	15'	15'	15'	15'	15'	15'	18'
Glass type	Ceramic glass	Ceramic glass	Ceramic glass	Tempered glass	Ceramic glass	Ceramic glass	Ceramic glass	Ceramic glass	Ceramic glass
Exterior air intake (diameter)	Yes (4")	Yes (4")	Yes (4")	Yes (4")	Yes (4")	Yes (4")	Yes (4")	Yes (3")	Yes (4")
Warranty	Limited lifetime	Limited lifetime	Limited lifetime	Limited lifetime	Limited lifetime	Limited lifetime	Limited lifetime	Limited lifetime	Limited lifetime
Test standard - Safety	ULC S-610 / UL127	ULC S-610 / UL127	ULC S-610 / UL127	ULC S-610 / UL127	ULC S-610 / UL127	ULC S-610 / UL127	ULC S-610 / UL127	ULC S-610 / UL127	ULC S-610 / UL127
Test standard - Emissions	EPA Exempt	EPA Exempt	EPA Exempt	EPA Exempt	ASTM 2515 / ASTM 2558	EPA Method 28	EPA Method 28	EPA Method 28	ASTM 2515 / ASTM 2558
Clearances to combustible materials									
Back wall	0"	0"	0"	0"	0"	0"	0"	0"	0"
Sides	0"	0"	0"	0"	0"	0"	0"	0"	0"
Floor	0"	0"	0"	0"	0"	Raised 2" above floor level	0"	0"	0"
Combustible shelf (from base of fireplace)	48"	46"	46"	46"	46"	51"	56"	58"	52"
Side mantle (1)	0"	0"	0"	0"	8"	0"	0"	4"	8"
Side wall (2)	24"	24"	24"	24"	8"	12"	24"	17"	8"
Non-combustible surround (top)	0"	0"	0"	0"	27 1/4"	12"	12"	18"	38"
Non-combustible surround (sides)	0"	0"	0"	0"	5 3/8"	0"	0"	4"	8"
Exterior dimensions and weight									
Height	44"	41 1/2"	40 3/4"	40 5/8"	60 3/4"	34 5/16"	45 1/8"	38"	74 13/16"
Width	41"	38"	36 1/8"	40 1/4"	45"	33"	42"	41"	59 1/2"
Depth	25 1/2"	24"	28 1/4"	24"	25 11/16"	24 5/8"	23 5/8"	26"	30 13/16"
Weight	209 kg (460 lb)	181 kg (400 lb)	195 kg (430 lb)	181 kg (400 lb)	283 kg (625 lb)	147 kg (325 lb)	295 kg (650 lb)	159 kg (350 lb)	357 kg (788 lb)**
Options									
Cast iron door(s); black (ordered and sold separately)	N/A	N/A	N/A	N/A	N/A	N/A	Standard	N/A	N/A
Cast iron door overlay(s); painted black, gold plated or brushed nickel plated	N/A	N/A	N/A	N/A	N/A	Optional	N/A	N/A	N/A
Steel door overlay(s); painted black, gold plated or brushed nickel plated	N/A	N/A	N/A	N/A	N/A	N/A	N/A	Optional	N/A
Blower with variable speed	Standard	Standard	Optional	Optional	N/A	Optional	Optional	Standard	N/A
Hot air gravity kit (diameter)	Optional (7")	Optional (7")	N/A	N/A	N/A	Optional (7")	Optional (7")	Optional (8")	N/A
Forced air kit (diameter)	Optional (6")	Optional (6")	N/A	N/A	N/A	Optional (6")	Optional (6")	Optional (5")	N/A
Fire screen kit	Standard	Standard	Standard	Standard	Standard	Optional	N/A	Optional	Standard

1) Subject to a maximum protrusion - see owner's manual. (2) From the opening of the door. *May also be installed with a 7" chimney. See owner's manual for more details. **Without the refractory bricks.

Technical data contained in this catalogue are for reference only. Any installation must be done according to the data and drawings detailed in the Owner's manual.

Manufacturers, brands and types of approved chimneys



MANUFACTURERS*	BRANDS	TYPES	FP1	FP2	FP5	FP6	FP7	FP8	FP9	FP10	FP11
Selkirk	Ultra-Temp (UT)	1" Solid Pack	x	x	x	x	x	x	x	x	x
Selkirk	Super Pro (SPR)	1" Solid Pack	x	x	x	x	x	x	x	x	x
Selkirk	Super Vent (JSC)	1" Solid Pack	x	x	x	x	x	x	x	x	x
Selkirk	Hart & Cooley (TLC)	1" Solid Pack	x	x	x	x	x	x	x	x	x
Selkirk	Sure-Temp (ST)	1" Solid Pack	x	x	x	x	x	x	x	x	x
Selkirk	CF Sentinel (CF)	2" Solid Pack	x	x	x	x	x	x	x	x	x
Selkirk	Super Pro 2100 (ALT)	2" Solid Pack	x	x	x	x	x	x	x	x	x
Selkirk	Super Vent 2100 (JM)	2" Solid Pack	x	x	x	x	x	x	x	x	x
Selkirk	UltimateOne	1" Solid Pack	x	x	x	x	x	x	x	x	x
Security Chimney	ASHT+	1" Solid Pack	x	x	x	x	x	x	x	x	x
Security Chimney	S-2100 +	2" Solid Pack	x	x	x	x	x	x	x	x	x
Simpson Dura Vent	Dura Tech	1" Solid Pack	x	x	x	x	x	x	x	x	x
Simpson Dura Vent	Dura Plus HTC	2" Solid Pack	x	x	x	x	x	x	x	x	x
Simpson Dura Vent	Dura Plus	AC Triple Wall		x		x			x		x
ICC	Excel 2100	1" Solid Pack	x	x	x	x	x	x	x	x	x
Metal Fab	Temp Guard	1" Solid Pack	x	x	x	x	x	x	x	x	x
American Metal	HSS	AC Triple Wall		x		x			x		x
American Metal	HS	AC Triple Wall		x		x			x		x
Olympia Chimney	Ventis	1" Solid Pack	x	x	x	x	x	x	x	x	x
FMI (U.S.A. only)	AC	AC Triple Wall		x		x			x		x

*Specific components may be required depending on the chimney manufacturer.

Valcourt
The Fireplace of Your Dreams

www.valcourtinc.com



© Sources mixtes
Mixed Sources
Groupe de produits issus de forêts bien
gérées et d'autres sources contrôlées
Product group from well-managed forests
and other controlled sources
www.fsc.org Cert no. SCS-COC-20990
©1996 Forest Stewardship Council

