

valor™ THE ORIGINAL™
RADIANT GAS FIREPLACE

LX2 3-sided

Linear Fireplace Series



Decorative Glass (2200DGS) with Reflective Glass liner (2200RGL) and optional Underbed lighting (2200ULK).

LX2: 3-sided

Introducing Valor's newest linear radiant gas fireplace, LX2 (2200J) is the first heater-rated, efficient, three-sided fireplace. The LX2's outstanding radiant performance will heat any space—be it a living room, family room or great room—matched in grandeur by its sought-after three-dimensional design.

Innovation

- With **HeatShift™** an essential part of the LX2, you'll find the combination of radiant heat from the fireplace and HeatShift's convective heat a satisfying source of comfortable warmth.
- With four venting options—including three **HeatShift™** options—you can achieve the exact look you want.

Valor's **Integrated Safety Screen** means we have not compromised on safety or performance.

- Though easily removed for maintenance, the screen is meticulously designed for everyday use—blending with the clean lines of the fireplace.
- The screen lets through the comfortable feeling of radiant warmth—unlike some protective barriers—and protects you from the hot window.

Design

- Designed for 180 degree enjoyment, the LX2 welcomes different vantage points in your home with its open sides.
- Subtle **accent lighting** highlights the fire bed and flame, creating a focal point even when the fireplace is off, for year-round appeal.
- HeatShift™** allows you to select the finish you want, knowing that your artwork, TV and construction materials all stay cooler and protected.

Choose from five fire beds and three liners:

Fire beds

- Driftwood
- Splitwood **new**
- Rock and Shale
- Murano glass
- Decorative glass.

Liners

- Black Fluted
- Limestone **new**
- Reflective Glass

Lighting

- overhead accent lighting included.
- underbed lighting optional, for use with decorative glass.

Valor's LX2 3-sided will suit homeowners who value aesthetics, performance and safety.



Made for new construction or major renovation



HeatShift™





Splitwood (1700SWK) with Limestone liner (2200LML).

LX2 options

Window Dimensions

- front: 45¼" x 16"
- side: 11¼" x 16" (2 pcs)

Framing Dimensions*

	H	W	D
Minimal Combustible Framing option (no steel required)	44½"	52"	20"

*For more framing options and complete installation instructions, always refer to the manual.

- Splitwood 1700SWK Limestone liner 2200LML



- Murano Glass 2200DGM Reflective Glass liner 2200RGL



- Rock and Shale 1714RSS Limestone liner 2200LML



Combine any one of the 5 fire beds with your choice of 3 liners for a possible 15 style combinations. For a full selection of styles, visit valorfireplaces.com/lx2 or build your own custom design with Valor's new Design Center, design.valorfireplaces.com

Driftwood 1705DWK Black Fluted liner 2200FBL



Decorative Glass 2200DGS Black Fluted liner 2200FBL



Optional Underbed lighting 2200ULK

Rock and Shale 1714RSS Black Fluted liner 2200FBL





Integrated Safety Screen

- Easily removed for maintenance, the screen finishes the clean lines of the fireplace.

Easy care

- Unlike many multi-sided fireplaces, the viewing window is easily removed, cleaned and replaced in minutes.



Fuel bed options

Splitwood 1700SWK



Murano Glass 2200DGM



Long Beach Driftwood 1705DWK



Decorative Glass 2200DGS



Rock and Shale 1714RSS



Optional

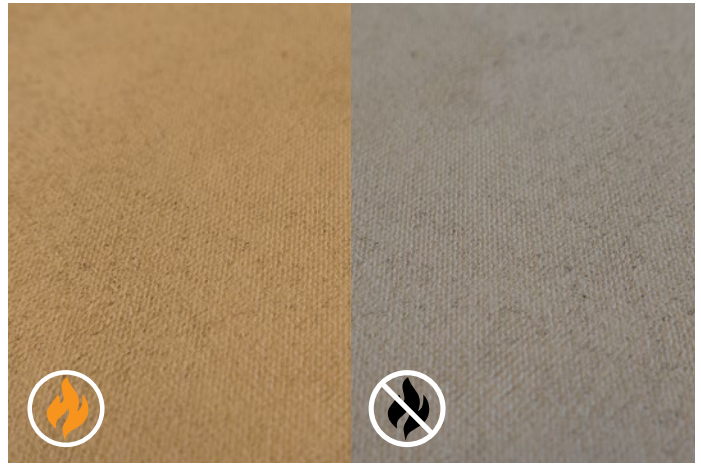
- Underbed Lighting (2200ULK)** highlights the Decorative glass—especially when the fireplace is turned off.

Liner options

Fluted Black 2200FBL



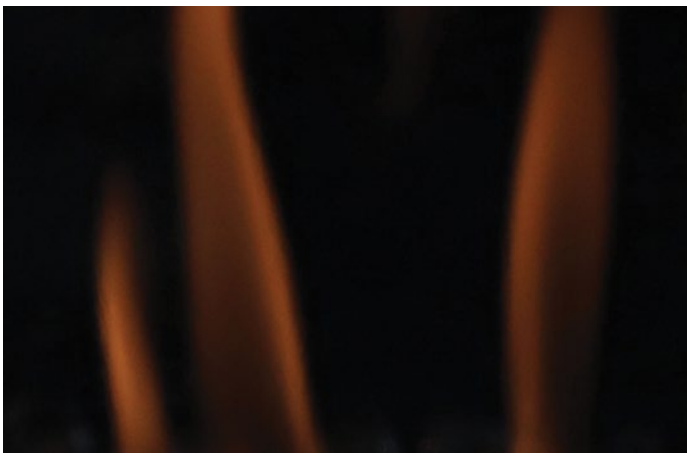
Limestone 2200LML



When fire is on,
the liner appears brighter.

When fire is off,
the liner appears grey.

Reflective Glass (High Definition) 2200RGL



For a full selection of styles, visit

valorfireplaces.com/lx2

or build your own custom design
with Valor's new Design Center,

design.valorfireplaces.com

Efficiency Ratings

Model	Fuel	Max. Input	Min. Input	EnerGuide Rating*	Max. Output*
2200JN	NG	36,000	19,000	67.4%	26,028
2200JP	NP	36,000	21,000		

* EnerGuide Ratings and Outputs have been determined without a fan/blower, using the CSA P41-15 test method.

Certified to ANSI 21.88-2014/ CSA 2.33-2014 Vented Gas Fireplace Heater American National Standard CGA - 2.17-91 Gas Fired Appliances for use at high altitudes.

About our efficiency ratings

While the North American fireplace industry is largely self-regulated, at Valor we use recognized Canadian and US government testing methods to determine our energy efficiencies, and ensure our products perform in your home as rated.

Visit valorfireplaces.com/efficiency for more information.

HeatShift™ standard with the LX2

Keeps wall cooler

- Valor's unique **HeatShift™** transfers convective heat upwards through hidden ducts and back into the room—completely bypassing the wall and surface areas above the fireplace—so valued artwork, a TV or construction materials stay cooler.

Improves overall performance

- A raised heat outlet improves convection airflow—reducing wall temperatures and improving overall performance—circulating warm air back into the room at a higher elevation.
- Harnessing convective warmth, up to 60% of fireplace heat rises and flows through **HeatShift™** and back into the room. The remaining radiant heat emanates from the fireplace, warming people, objects, walls and floors in the space.

No electricity or fan required

- **HeatShift™** elevates heat naturally using gravity and Valor product ingenuity—no need for a fan or electricity. No power—no problem.

More options for construction

- **HeatShift™** simplifies the construction and installation of your fireplace, providing a much greater range of finishing options. **HeatShift™** keeps the surrounding wall cooler, including heat sensitive finishes and décor—such as drywall, wood and tile.

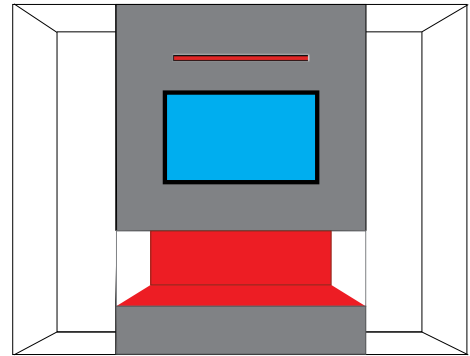
Meets North American Building codes

- Unlike many competitor products in the field, **HeatShift™** utilizes standard construction techniques, meeting code requirements across North America.
- Built and designed in North America for American and Canadian homes.

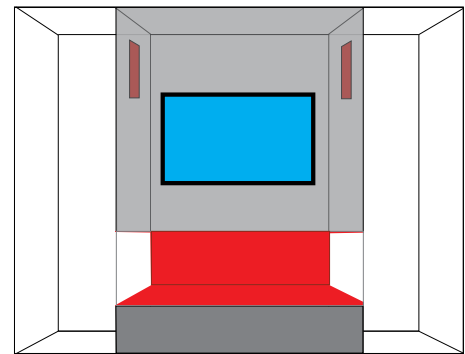
Zone heating

- Looking to heat other areas in your home? **HeatShift's** Remote Blower option helps manage your heat effectively by distributing warmth to other spaces in your home—such as bedrooms, hallways or utility rooms.

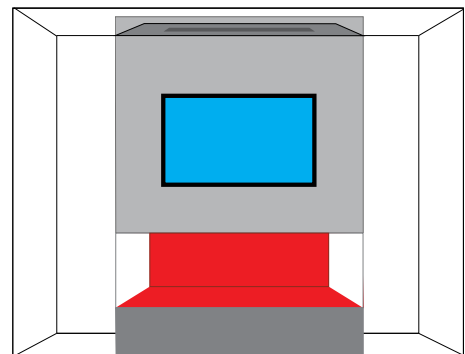
Flexible **HeatShift™** options:



Front wall outlet
LDK4 (38"x2")



Side wall outlets
LDK3



Outlet behind valance
LDK4 (38"x 2")

Always refer to the manual for complete installation instructions.

SmartFire by Valor

RADIANT HEAT

Like heat from the sun, Valor fireplaces distribute radiant warmth directly to your living space. Radiant heat satisfies human comfort needs, using up to 25% less energy compared to traditional forced air systems. Valor warmth efficiently replaces the chill from cold windows and doors, providing steady, even heat to people and objects in the room.



PACIFIC NORTHWEST DESIGN, DEVELOPMENT & DISTRIBUTION

Locally owned and operated in the Pacific Northwest, every Valor fireplace is designed, developed and manufactured exclusively for North America. With a proven product family history, Valor continues to introduce unique fireplaces that stand the test of time.

EASY CONTROL

Standard with every fireplace, our ValorStat remote control adjusts the flame up or down to match the heat output of your needs, providing a constant comfort level as the room warms or as the outside temperature falls—a fireplace for all seasons.



THE COMFORT ZONE

Reduce your furnace's output of hot air into empty rooms and unused spaces.

Zone heating requires no ducting or forced air, delivering radiant and convective warmth to the spaces you frequent the most. Where you want it—when you want it.



BURN CLEAN, ENGINEERED GREEN

Natural gas is the cleanest fireplace fuel you can burn, with the lowest particulate levels and lowest levels of greenhouse gases.

Valor specializes in the design of clean heat solutions for your home.



PRODUCT VERSATILITY

Known for our versatility in the field, Valor products are extremely diverse in their application and design. New construction or home renovation—gas inserts, zero clearance and freestanding fireplaces provide a wide range when selecting the ideal fireplace to suit your personal heating needs.



SAVINGS

Your pilot flame will automatically turn off if your fireplace is inactive for over five days, saving energy and lowering overall home heating costs.

Keep forgetting to turn down your fireplace? Set the ValorStat to automatically turn down after six hours.



NO POWER, NO PROBLEM.™

If the power fails in the winter your home can get cold fast. Valor fireplaces are fully functional heaters that don't need electricity. Our fireplaces provide the perfect mixture of radiant and convective heat, eliminating the need for a fan.

No power, no problem.



NO FAN NECESSARY

We firmly believe that you shouldn't put up with the constant buzz of a fan to be warm. That's why we designed glowing fires to radiate heat and secondary heat exchangers to naturally circulate warm air by convection throughout the room. While a fan is an option, you'll likely find it unnecessary.



RELIABILITY

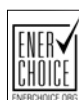
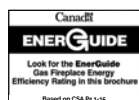
With over 100 years in the heating industry, we take pride in providing high-quality, safe products. Engineered to provide peace of mind, every Valor product undergoes extensive safety testing before it reaches our customer. That's why many customers own more than one Valor fireplace in their lifetime.



FIREPLACE SAFETY — USE RADIANT HEAT SAFELY

Fireplace surfaces, in particular the glass viewing window, are extremely hot during operation and will remain hot for a period of time after the fireplace is turned off. Contact with the hot glass can cause severe burns. Close adult supervision is required if there are young children, or at-risk individuals in the house. Included with your purchase, a Valor barrier screen is recommended at all times. Install an approved aftermarket safety gate to keep toddlers, young children and at-risk individuals a safe distance from the fireplace.

For more information please visit valorfireplaces.com/safety.



Proudly Made in North America



Copyright Miles Industries Ltd. 2017
Designed and manufactured by:



Rock and Shale (1714RSS) with Black Fluted liner (2200FBL).

Your Authorized Valor Dealer

valor[®]
THE ORIGINAL
RADIANT GAS FIREPLACE™
valorfireplaces.com