



# BEYOND FIRE



PRODUCT SHOWN: INSPIRE 2000-1 (OB02045)

*Wood Stoves,  
Inserts & Fireplaces.*

**Premium quality  
with a unique design**



[WWW.OSBURN-MFG.COM](http://WWW.OSBURN-MFG.COM)



## BEYOND FIRE

**BEYOND... A SINGLE WORD THAT CAPTURES OUR PHILOSOPHY AND COMMITMENT AT OSBURN. THIS IS OUR SOURCE OF INSPIRATION. WHAT DOES "BEYOND" MEAN TO OSBURN?**

*BEYOND drives us forward when we look at products. We go beyond with what we do and with our interactions in life. It is more than building and selling products. It's no longer about just doing, but doing with a purpose, doing efficiently. It is about exceeding expectations. BEYOND... drives us to do better, to be more functional and achieve higher performance. We believe great products define a great appliance manufacturer. We are not afraid to take the lead or to stretch the boundaries. When you go BEYOND..., you simply go ahead; you look at the present and envision amazing things happening for the future.*

*That's who we are, our philosophy. Our hope is to share it with you and we invite you to take the time to **discover how we go beyond.***





PRODUCT SHOWN: 2000-1 (0802016)



IMAGES IN THIS CATALOG  
ARE FOR REFERENCE ONLY.



# SUMMARY

## WOOD STOVES

- 06 900
- 07 Soho
- 08 1600
- 09 Inspire 2000 **NEW**
- 10 2000
- 11 Matrix
- 12 2200
- 13 2300
- 14 2400
- 15 Features, technical data and clearances

## WOOD INSERTS

- 17 1100
- 18 1600
- 19 1800
- 20 Inspire 2000-I **NEW**
- 21 2000
- 22 Matrix
- 23 2200
- 24 2400
- 25 Features, technical data and clearances

## ZERO CLEARANCE WOOD FIREPLACE

- 27 Stratford
- 28 Everest
- 29 Horizon
- 30 Features, technical data and clearances

## 33 ACCESSORIES



Size	Fuel	Recommended heating area	Maximum heat output, dry cordwood		
<b>S</b>		<b>250 — 1,000 sq. ft. *</b>	<b>40,000 BTU/h</b>		



**DUPLEX**  
Fireplace tool sets  
See page 33

<b>900</b>	OB00900	Emissions	Optimum efficiency	Osburn 900
		4.0 g/h	78.2%	

BEYOND  
SIZE

Osburn is proud to present its 900 model, the smallest wood stove in the Osburn range. The 900 still incorporates the features and the technology of the larger Osburn stoves. This EPA stove packs a lot of heat with style! With an output of up to 40,000 BTU/h, this sturdy heater will keep you warm and toasty. In spite of its size, the Osburn 900 takes an adequate log length of 17", making it an admired option in the small stove market.



Optional: firescreen.

Firebox volume:  
1.3 cu. ft.

Maximum log length:  
17".

Exterior dimensions:  
25 3/4" H  
22 7/8" W  
21 7/8" D



Optional: premium quality 100 CFM blower with variable speed control.

Optional: thermodisc kit.

Optional: quick connect thermodisc.



Optional: fresh air intake kit.

Optional: flexible insulated fresh air intake pipe (4' length / 5" diameter).



Maximum heat output,  
dry cordwood

**55,000 BTU/h**

Recommended heating area

**500 — 1,500 sq. ft. \***

Fuel



Size

**M**



Soho with creme enameled decorative side panels and two-sided pedestal.

Emissions  
**4.0 g/h**

Optimum efficiency  
**75.3%**

OB01520

**SOHO**

BEYOND

CONTEMPORARY

DESIGN

Once again, Osburn innovates to offer you the Soho, a small wood stove with an ultra modern design. This stove, which features an exceptional view of the fire, comes with an easy-to-operate door latch system that compliments the clean lines of the appliance. The Soho can be personalized according to your tastes and décor, thanks to its modular side panels available in different finishes and it offers two convenient and safe pedestal choices to store your logs. This stove can be equipped with an optional blower and thermdisc, in addition to being ready for a fresh air connection kit without the need for any special adaptor. The Soho is an ecological heating appliance that will please those seeking efficiency and contemporary design!



Required: black painted or creme or red enameled decorative side panels.

Firebox volume:  
1.7 cu. ft.

Maximum log length:  
17".



Required: regular pedestal with ash drawer.

Exterior dimensions:  
32 7/8" H  
25 3/4" W  
20" D



Required: two-sided pedestal and ash drawer.

Exterior dimensions:  
32 7/8" H  
28 1/2" W  
20" D



Optional: premium quality 130 CFM blower with variable speed control (thermdisc included).

Optional: quick connect thermdisc kit.

\*\*Optional: flexible insulated fresh air intake pipe (4' length / 5" diameter).

\*See the complete technical data on pages 15 and 16.

\*\*See note 2 on page 15.

Size	Fuel	Recommended heating area	Maximum heat output, dry cordwood	 **	
<b>M</b>		<b>500 — 1,800 sq. ft. *</b>	<b>65,000 BTU/h</b>		



**1600**

OB01613

Emissions  
4.4 g/h

Optimum efficiency  
80%

Osburn 1600 on pedestal with brushed nickel plated door overlay.

BEYOND  
COMBUSTION

With its perfect balance between power, efficiency and cleanliness, the Osburn 1600 wood stove is truly unique. Able to heat up to 1,800 square feet with a performance of 65,000 BTU/h, it is also environmentally friendly with emissions that may go as low as 0.87 g/h, well below EPA standards. No compromise is necessary with the 1600 – you choose a pedestal or cast iron legs, then you select a black, golden fire brown, gold plated, or a brushed nickel plated door. Whatever your choice, you'll have a beautifully balanced wood stove.



Required: black or brushed nickel plated cast iron door overlay.

Firebox volume:  
2.0 cu. ft.

Maximum log length:  
17".



Required: black or brushed nickel plated cast iron leg kit and ash pan.

Exterior dimensions on legs:  
31 1/2" H  
25" W  
26 1/2" D



Required: pedestal with ash drawer and safety lid.

Exterior dimensions on pedestal:  
32 3/8" H  
25" W  
26 1/2" D



Optional: premium quality 130 CFM blower with variable speed control.

 For pedestal model

\*\*Optional: fresh air intake kit. (pedestal version only)  
\*\*Optional: flexible insulated fresh air intake pipe (4' length / 5" diameter).





Maximum heat output,  
dry cordwood

**75,000 BTU/h**

Recommended heating area

**500 — 2,100 sq. ft. \***



Fuel

**M**



INEO  
Fireplace tool sets  
See page 33

# NEW INSPIRE 2000

Inspire 2000 with  
soapstone base kit.

Emissions  
1.54 g/h

Optimum efficiency  
77%

OB02042

BEYOND

ELEGANCE

The Inspire offers a style that will surely withstand variable trends with these pure lines of balanced proportions, allowing the brand Osburn to easily compare to European-style products. This more contemporary look is available on steel base, soapstone or even a minimalist base for those who prefer to place the unit directly on a non-combustible surface. Equipped with a 2.4 cubic feet firebox and an outside air intake, this unit will meet the requirements of domestic energy standards, not to mention that a mobile home installation is permitted. The Inspire largely meets EPA requirements with emissions as low as 1.54 g/h.



Required: decorative side  
panel kit

Firebox volume:  
2.4 cu. ft.

Maximum log length:  
20".

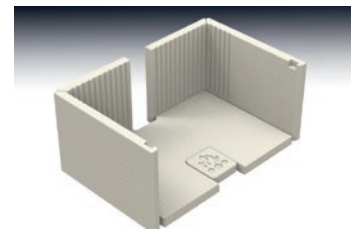


Required: minimalist, steel or  
soapstone base kit.

Exterior dimensions:  
36 9/16" H  
27 7/8" W  
24 15/16" D



Optional: premium quality  
130 CFM blower with variable  
speed control.



Optional: refractory panel kit

\*See the complete technical data on pages 15 and 16.

\*\*See note 2 on page 15.

Size	Fuel	Recommended heating area	Maximum heat output, dry cordwood					
<b>L</b>		<b>500 — 2,100 sq. ft.*</b>	<b>75,000 BTU/h</b>					



**INEO**  
Fireplace  
tool sets  
See page 33

<b>2000</b>	OB02015	Emissions 1.54 g/h	Optimum efficiency 77%	Osburn 2000 with black door overlay and black legs
-------------	---------	-----------------------	---------------------------	--

BEYOND  
CHARM

The Osburn 2000 is one of the most popular unit in the Osburn family of wood stoves. Its cast-iron door, which features the distinctive lines you've come to expect from Osburn, gives it a look combining the contemporary and the traditional. With a 2.4 cubic foot firebox, the Osburn 2000 will delight the most serious of wood stove enthusiasts who want both style and heating power. Also equipped with a 130 CFM blower, the Osburn 2000 is the most sought-after model of the season!



Required: black or brushed nickel plated cast iron door overlay.

Firebox volume:  
2.4 cu. ft.

Maximum log length:  
20".

Optional firescreen.



Required: black or brushed nickel plated cast iron leg kit with ash drawer and safety lid.

Exterior dimensions on legs:  
30 3/4" H x 27" W x 29" D

Exterior dimensions on pedestal:  
33 1/8" H x 27" W x 29" D



Required: pedestal with ash drawer and safety lid.

Optional: thermodisc kit.

Optional: quick connect thermodisc.



Optional: glass ash lip.



Premium quality 130 CFM blower with variable speed control included.



\*\*Optional: fresh air intake kit.  
\*\*Optional: flexible insulated fresh air intake pipe (4' length / 5" diameter).



Maximum heat output,  
dry cordwood

**75,000 BTU/h**

Recommended heating area

**750 — 2,100 sq. ft.\***

Fuel



Size

**L**

Glass hearth pad  
54" X 46 3/4"  
See page 34

Matrix with soapstone panels.

Emissions  
3.9 g/h

Optimum efficiency  
77.2%

OB02020

**MATRIX**

BEYOND

CONTEMPORARY

The Matrix wood stove's clean and modern lines is sure to bring a European touch to any room. Inspired by the renowned finnish fireplaces, the top of the stove includes two rich pieces of soapstone. These canadian mined soapstones are also available as side panels kit that brings elegance to another level. Logs can be conveniently placed underneath the large firebox, making the Matrix not only stylish, but practical.



Required: soapstone or black painted panel kits.

Firebox volume:  
2.4 cu. ft.

Maximum log length:  
20".



Reversible door (hinged on left or right).

Ash pan with safety lid.

Exterior dimensions:  
36 7/8" H  
27 1/8" W  
25 5/8" D



Premium quality 130 CFM blower with variable speed control included.

Quick connect thermodisc included.

\*\*Fresh air intake adapter included.



Optional: firescreen.

\*\*Optional: flexible insulated fresh air intake pipe (4' length / 5" diameter).

\*See the complete technical data on pages 15 and 16.

\*\*See note 2 on page 15.

Size

Fuel

Recommended heating area

Maximum heat output,  
dry cordwood

**L**



**800 — 2,000 sq. ft.\***

**70,000 BTU/h**



**2200**

OB02211

Emissions  
2.7 g/h

Optimum efficiency  
75%

Osburn 2200 with brushed nickel plated door overlay and brushed nickel plated louver and trivet.

BEYOND  
STYLE

Although similar in many ways to the 1800 model, the 2200 stove is suited for intensive, continuous use. Its 20% larger firebox is designed to maintain steady heat over a longer period. A powerful, premium quality 130 CFM blower is available as an option. The glass surface of the bay window is also 20% larger than that of the 1800 model, providing a wonderful view of the fire from every angle. In short, the Osburn 2200 offers a perfect combination of utility and enjoyment!

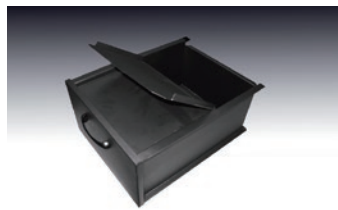


Required: black or brushed nickel plated door overlay.

Required: black or brushed nickel plated louver and trivet.

Firebox volume:  
2.3 cu. ft.

Maximum log length:  
18".



Ash drawer with safety lid.

Exterior dimensions:  
32 1/8" H  
26" W  
26 1/4" D



Optional: premium quality 130 CFM blower with variable speed control.



\*\*Optional: fresh air intake kit.

\*\*Optional: flexible insulated fresh air intake pipe (4' length / 5" diameter).



Maximum heat output,  
dry cordwood

**90,000 BTU/h**

Recommended heating area

**900 — 2,300 sq. ft.\***

Fuel



Size

**XL**



**PAPYRUS**  
Fireplace tool sets  
See page 33

Osburn 2300 with brushed nickel plated  
cast iron door overlay and legs.

Emissions  
4.5 g/h

Optimum efficiency  
75%

OB02302

**2300**

BEYOND

PERFORMANCE

The Osburn 2300 is designed for intensive use. The depth of its firebox and the large door opening makes wood loading easy, with logs up to 20 inches. Its hidden hinges and very large glass surface embellish its use. Each 2300 model is equipped with an premium quality blower. The secondary air pipes and C-Cast baffle ensure combustion of the highest quality.



Required: black or brushed  
nickel plated cast iron  
door overlay.

Firebox volume:  
3.4 cu. ft.

Maximum log length:  
20".



Required: black or brushed  
nickel plated cast iron leg kit  
with ash pan.

Exterior dimensions:  
On legs      On pedestal  
33" H      33 5/8" H  
25 3/4" W    25 3/4" W  
34 7/8" D    34 7/8" D



Required: pedestal with ash  
drawer and safety lid.

Optional: thermodisc kit.

Optional: quick connect  
thermodisc.



Premium quality 100 CFM  
blower with variable speed  
control included.



\*\*Optional: fresh air intake kit.  
\*\*Optional: flexible insulated  
fresh air intake pipe  
(4' length / 5" diameter).

\*See the complete technical data on pages 15 and 16.

\*\*See note 2 on page 15.

Size	Fuel	Recommended heating area	Maximum heat output, dry cordwood	 **	
<b>XL</b>		<b>1,000 — 2,700 sq. ft.*</b>	<b>100,000 BTU/h</b>		



# 2400

OB02411

Emissions  
3.9 g/h

Optimum efficiency  
78%

Osburn 2400 with brushed nickel plated door overlay.

## BEYOND HEAT

Some of the Osburn 2400's impressive features include a 3.4 cubic foot firebox; a Recommended heating area that's up to 2,700 square feet; it takes logs up to 21"; and burns up to 10 hours in low combustion mode\*. In addition to its impressive performance, the 2400 is environmentally efficient, with emissions as low as 1.6 g/h (in medium-high combustion mode). If you're looking for a large wood stove for your home or cottage, the Osburn 2400 is a perfect choice.



Required: black or brushed nickel plated cast iron door overlay.

Firebox volume:  
3.4 cu. ft.

Maximum log length:  
21".



Pedestal and ash drawer with safety lid.

Exterior dimensions:  
33" H  
30" W  
30 5/8" D



Optional: premium quality 130 CFM blower with variable speed control.



\*\*Optional: fresh air intake kit.

\*\*Optional: flexible insulated fresh air intake pipe (4' length / 5" diameter).

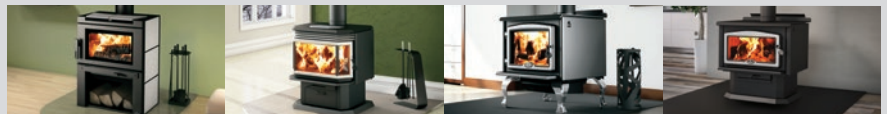
\*See the complete technical data on pages 15 and 16.  
\*\*See note 2 on page 15.

# TECHNICAL DATA: WOOD STOVES

## GENERAL FEATURES: WOOD STOVES



MODELS	900	Soho	1600	Inspire 2000	2000
Color	Metallic Black	Metallic Black	Metallic Black	Metallic Black	Metallic Black
Maximum burn time (note 1)	5 hours	6 hours	6 hours	8 hours	8 hours
Combustion technology	Non-catalytic	Non-catalytic	Non-catalytic	Non-catalytic	Non-catalytic
Recommended heating area (note 1)	250 to 1,000 sq. ft	500 to 1,500 sq. ft	500 to 1,800 sq. ft	500 to 2,100 sq. ft	500 to 2,100 sq. ft
Maximum heat output - dry cordwood	40,000 BTU/h (11.7 kW)	55,000 BTU/h (16.1 kW)	65,000 BTU/h (19.0 kW)	75,000 BTU/h (22.0 kW)	75,000 BTU/h (22.0 kW)
Overall heat output rate (min. to max.)	10,800 BTU/h (3.2 kW) to 22,600 BTU/h (6.6 kW)	11,400 BTU/h (3.3 kW) to 25,400 BTU/h (7.4 kW)	11,800 BTU/h (3.5 kW) to 42,400 BTU/h (12.4 kW)	14,800 BTU/h (4.34 kW) to 28,600 BTU/h (8.38 kW)	14,800 BTU/h (4.34 kW) to 28,600 BTU/h (8.38 kW)
Door opening size (W x H)	15" x 7 5/8"	15 3/4" x 7 1/4"	15 5/8" x 8 3/8"	20" x 8 3/8"	17 1/2" x 9"
Firebox dimensions (W x H x D)	18 3/8" x 9 5/8" x 12 1/2"	18 1/8" x 12 1/4" x 13 1/2"	18 1/8" x 12 7/8" x 14 3/4"	21 1/4" x 11 15/16" x 17 11/16"	21" x 11 7/8" x 16 3/4"
Firebox volume	1.3 cu. ft.	1.7 cu. ft.	2.0 cu. ft.	2.4 cu. ft.	2.4 cu. ft.
Average particulate emissions rate	4.0 g/h	4.0 g/h	4.4 g/h	1.54 g/h	1.54 g/h
Glass viewing area (W x H)	13 3/8" x 7 3/4"	16 1/4" x 8 1/4"	15" x 8 3/8"	20 1/4" x 9 1/2"	17 1/8" x 10 1/4"
Door frame	Cast iron with logo	Steel	Cast iron with logo	Cast iron	Cast iron
Maximum log length	17"	17"	17"	20"	20"
Optimum efficiency	78.2%	75.3%	80%	77%	77%
Mobile home approved (note 2)	No	Yes	Yes	Yes	Yes
Approved for an alcove installation	Yes	No	No	Yes	Yes
Flue spigot diameter	6"	6"	6"	6"	6"
Glass type	Ceramic glass				
Adjustable handle	Yes				
Self-cleaning glass system	Yes				
Ash drawer with safety lid	Yes (all freestanding wood stoves) except Osburn 900				
Warranty	Lifetime, limited				
Test standard - Safety	According to ULC S627, UL 1482, UL 737, NFPA 211 and CSA B365 standards applicable in Canada and USA				
Test standard - Emissions / efficiency	EPA / CSA B415.1-10				



MODELS	Matrix	2200	2300	2400
Color	Metallic Black	Metallic Black	Metallic Black	Metallic Black
Maximum burn time (note 1)	8 hours	8 hours	10 hours	10 hours
Combustion technology	Non-catalytic	Non-catalytic	Non-catalytic	Non-catalytic
Recommended heating area (note 1)	750 to 2,100 sq. ft	800 to 2,000 sq. ft	900 to 2,300 sq. ft	1,000 to 2,700 sq. ft
Maximum heat output - dry cordwood	75,000 BTU/h (22.0 kW)	70,000 BTU/h (20.5 kW)	90,000 BTU/h (26.4 kW)	100,000 BTU/h (29.3 kW)
Overall heat output rate (min. to max.)	12,500 BTU/h (3.7 kW) to 31,300 BTU/h (9.2 kW)	11,700 BTU/h (3.4 kW) to 30,400 BTU/h (8.9 kW)	11,700 BTU/h (3.4 kW) to 26,400 BTU (7.7 kW)	13,300 BTU (3.9 kW) to 44,100 BTU/h (12.9 kW)
Door opening size (W x H)	17 1/2" x 8 3/4"	19 1/8" x 8 7/8"	15 1/2" x 11 1/2"	19 1/2" x 8"
Firebox dimensions (W x H x D)	21" x 12" x 16 1/2"	19 1/8" x 12 1/4" x 17 1/4"	18 3/8" x 14 7/8" x 21 1/4"	22 1/2" x 13 1/2" x 19 3/8"
Firebox volume	2.4 cu. ft.	2.3 cu. ft.	3.4 cu. ft.	3.4 cu. ft.
Average particulate emissions rate	3.9 g/h	2.7 g/h	4.5 g/h	3.9 g/h
Glass viewing area (W x H)	19 5/8" x 11 7/8"	26 1/4" x 10 3/8"	15 1/8" x 10 7/8"	19 1/8" x 8 7/8"
Door frame	Cast iron, reversible	Steel	Cast iron with logo	Cast iron with logo
Maximum log length	20"	18"	20"	21"
Optimum efficiency	77.2%	75%	75%	78%
Mobile home approved (note 2)	Yes	Yes	Yes	Yes
Approved for an alcove installation	No	No	No	No
Flue spigot diameter	6"	6"	6"	6"
Glass type	Ceramic glass			
Adjustable handle	Yes			
Self-cleaning glass system	Yes			
Ash drawer with safety lid	Yes (all freestanding wood stoves) except Osburn 900			
Warranty	Lifetime, limited			
Test standard - Safety	According to ULC S627, UL 1482, UL 737, NFPA 211 and CSA B365 standards applicable in Canada and USA			
Test standard - Emissions / efficiency	EPA / CSA B415.1-10			

Note 1 : Recommended heating area and maximum burn time may vary subject to location in home, chimney draft, heat loss factors, climate, fuel type and other variables. The recommended heated area for a given appliance is defined by the manufacturer as its capacity to maintain a minimum acceptable temperature in the designated area in case of a power failure.

Note 2 : With fresh air intake kit on the pedestal option only. The only appliance on legs that may have the fresh air intake kit is the 2000 model (OB02015).

**SPECIFIC FEATURES: WOOD STOVES**

MODELS	900	Soho	1600	Inspire 2000	2000	Matrix	2200	2300	2400
--------	-----	------	------	--------------	------	--------	------	------	------

Exterior dimensions and weight

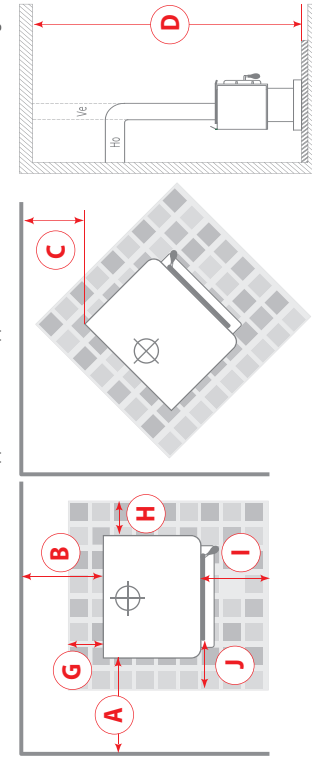
Height (pedestal)	N/A	32 7/8"	32 3/8"	36 9/16"	33 1/8"	36 7/8"	32 1/8"	33 5/8"	33"
Height (legs)	25 3/4"	N/A	31 1/2"	N/A	30 3/4"	N/A	N/A	33"	N/A
Width (pedestal/two-sided pedestal)	N/A	25 3/4" / 28 1/2"	25"	27 7/8"	27"	27 1/8"	26"	25 3/4"	30"
Width (legs)	22 7/8"	N/A	25"	N/A	27"	N/A	N/A	25 3/4"	N/A
Depth (pedestal)	N/A	20"	26 1/2"	24 15/16"	29"	25 5/8"	26 1/4"	34 7/8"	30 5/8"
Depth (legs)	21 7/8"	N/A	26 1/2"	N/A	29"	N/A	N/A	34 7/8"	N/A
Weight	273 lb (124 kg)	326 lb (148 kg)	360 lb (163 kg)	537 lb (244 kg)	390 lb (177 kg)	537 lb (244 kg)	399 lb (181 kg)	450 lb (204 kg)	513 lb (233 kg)

Clearances from unit to combustible materials (figures 1, 2, and 3)

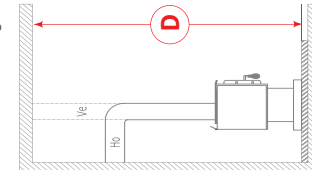
With single wall pipe (note 3)									
A— Sides (Canada / USA)	18"	16"	16"	17" / 16"	17" / 16"	16"	17"	12"	17" / 18"
B— Back (Canada / USA)	15 1/4" / 15"	15"	15"	14 1/2" / 11"	14 1/2" / 11"	15"	16"	15" / 12"	14" / 16"
C— Corner (Canada / USA)	10"	8 1/2" / 8"	12"	10"	10"	10"	10"	10"	8" / 12"
With double wall pipe									
A— Sides (Canada / USA)	18"	16"	16" / 20"	17" / 16"	17" / 16"	14"	20 1/2"	12"	15" / 17"
B— Back (Canada / USA)	10"	12"	6"	6"	6"	6"	5"	6"	7" / 12"
C— Corner (Canada / USA)	10"	6"	6"	7"	7"	6"	3"	10"	7"
D— Ceiling (Canada / USA) - (note 4)	68"	84"	84"	84"	84"	72"	84"	84"	84"

Blower	Optional	Optional	Optional	Optional	Included	Included	Optional	Optional	Optional
Black door overlay	Included	Included	Optional	Included	Optional	Included	Optional	Optional	Optional
Brushed nickel plated door overlay	N/A	N/A	Optional	N/A	Optional	N/A	Optional	Optional	Optional
Pedestal	N/A	Optional	Optional	Optional	Optional	Included	Included	Optional	Included
Black cast iron legs	Included	N/A	N/A	N/A	Optional	N/A	N/A	Optional	N/A
Brushed nickel plated cast iron legs	N/A	N/A	Optional	N/A	Optional	N/A	N/A	Optional	N/A
Black louver and trivet	N/A	N/A	N/A	N/A	N/A	N/A	N/A	N/A	N/A
Brushed nickel plated louver and trivet	N/A	N/A	N/A	N/A	N/A	N/A	N/A	N/A	N/A
Soapstone panel kit	N/A	N/A	N/A	N/A	N/A	N/A	N/A	N/A	N/A
Black decorative side panels	N/A	Optional	N/A	Included	N/A	Optional	N/A	N/A	N/A
Red enameled decorative side panels	N/A	Optional	N/A	N/A	N/A	Optional	N/A	N/A	N/A
Creame enameled decorative side panels	N/A	Optional	N/A	N/A	N/A	N/A	N/A	N/A	N/A

Note 3: Consult local code for minimum clearances of the single wall pipe itself to combustible materials. See also the venting manufacturer's instructions.  
 Note 4: Measured from the base of the appliance. Some appliances have been tested with a low ceiling. Before setting up your unit, refer to the installation manual.



**Figure 1**



**Figure 3**

FLOOR PROTECTOR*		
	CANADA	USA
G	8" – Note **	N/A (Canada only)
H	8"	N/A (Canada only)
I	18" From door opening	16" From door opening
J	N/A (USA only)	8" From door opening

\*Steel with a minimum thickness of 0.015" (0.38 mm) or ceramic tiles sealed together with grout. No protection is required if the unit is installed on a non-combustible floor (ex: concrete).

\*\*The floor protection at the back of the stove is limited to the stove's required clearance if such clearance is smaller than 8 inches (203 mm).

Technical data contained in this brochure are for reference only. Any installation must be done according to the data and drawings detailed in the owner's manual.





Maximum heat output,  
dry cordwood

**50,000 BTU/h**

Recommended heating area

**250 — 1,400 sq. ft.\***

Combustible



Size

**S**



Osburn 1100 insert with brushed nickel plated door overlay and black faceplate and trims.

Emissions

2.9 g/h

Optimum efficiency

75%

OB01151

**1100**  
Insert

The 1100 insert is the ready-made solution for smaller masonry fireplaces. With its flue at a 45° angle, it offers a wide range of configurations. The floor of its firebox is 2.5 inches deep, allowing greater accumulation of ashes and cleaner use. The 1100 insert also comes with a powerful 144 CFM blower. You'll be amazed and delighted by the 50,000 BTU/h of heat it provides!

BEYOND

FLEXIBILITY



Required: black or brushed nickel plated cast iron door overlay.

Firebox volume:  
1.5 cu. ft.

Maximum log length:  
17".

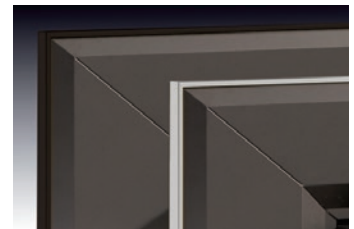


Premium quality 144 CFM heat activated blower with variable speed control included.

Exterior dimensions:  
21 1/8" H  
25 1/2" W  
22 1/4" D



Required: black faceplate kit. Regular (29" X 44").



Optional: black or brushed nickel faceplate trims. Regular (29" X 44").

\*See the complete technical data on pages 25 and 26.

Size

Fuel

Recommended heating area

Maximum heat output,  
dry cordwood

EPA  
CSA  
B415.1-10

**M**



**500 — 1,800 sq. ft.\***

**65,000 BTU/h**



**1600**  
Insert

OB01601

Emissions  
4.4 g/h

Optimum efficiency  
80%

Osburn 1600 insert with brushed nickel plated door overlay and black faceplate trims.

BEYOND  
COMBUSTION

With its compact design, the 1600 insert can be installed in a fireplace as small as 14 3/8" deep. Yet it offers a performance of up to 65,000 BTU/h and burns 17" logs. The standard 130 CFM blower helps maximize the stove's energy performance. The very low emissions at normal operating temperatures, positions the 1600 insert as an excellent choice for those seeking an environmentally friendly and ultra-efficient source of heat.



Required: black or brushed nickel plated cast iron door overlay.

Firebox volume:  
2.0 cu. ft.

Maximum log length:  
17".

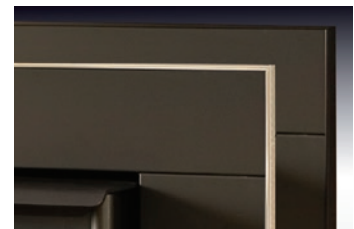


Premium quality 130 CFM heat activated blower with variable speed control included.

Exterior dimensions:  
22 5/8" H  
25 7/8" W  
26" D



Required: black faceplate kits. Regular (29" X 44"), Medium (32" X 44") or Large (32" X 50").



Optional: black or brushed nickel faceplate trims. Regular (29" X 44"), Medium (32" X 44") or Large (32" X 50").



Maximum heat output,  
dry cordwood

**65,000 BTU/h**

Recommended heating area

**500 — 1,800 sq. ft. \***

Fuel



Size

**M**



Osburn 1800 insert with black door overlay and trims with black faceplate kit.

Emissions  
2.8 g/h

Optimum efficiency  
75%

OB01801

**1800**  
Insert

Like its cousins in the 1800/2200 freestanding series, the 1800 insert offers the same tried-and tested design and the same great features, including a magnificent view of the fire through the bay window. It is also equipped with a powerful blower, transforming your old, inefficient fireplace into a highly effective heating system. The 1800 insert is both practical and elegant. It is a perfect choice to upgrade your living room or basement fireplace.

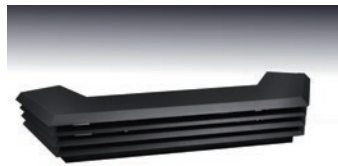
BEYOND  
CHARACTER



Required: black or brushed nickel plated cast iron door overlay.

Firebox volume:  
1.8 cu. ft.

Maximum log length:  
16".

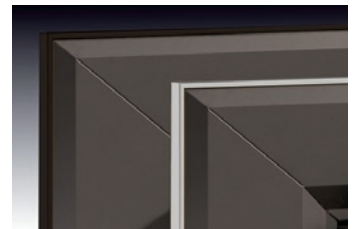


Premium quality 90 CFM heat activated blower with variable speed control included.

Exterior dimensions:  
20 3/8" H  
30" W  
25 3/8" D



Required: black faceplate kits. Regular (29" X 44") or Medium (32" X 44").



Optional: black or brushed nickel faceplate trims. Regular (29" X 44") or Medium (32" X 44").

\*See the complete technical data on pages 25 and 26.

Size	Fuel	Recommended heating area	Maximum heat output, dry cordwood	EPA CSA B415.1-10	EPA Approved 2020	Montreal APPROVED <2.5 g/h
L		500 — 2,100 sq. ft. *	75,000 BTU/h			



**DUPLEX**  
Fireplace tool sets  
See page 33

**NEW**  
**Inspire 2000**  
Insert

OB02045	Emissions 1.54 g/h	Optimum efficiency 77%	Inspire 2000 insert with narrow faceplate (U shape).
---------	-----------------------	---------------------------	--

BEYOND  
ELEGANCE

This wood insert will bring an unmatched modernism to your decor, in addition to perfectly combining functionality and comfort. The impeccable lines display a timeless style while guaranteeing reliability and durability. The Inspire will charm you as much by its aesthetics as its 77% optimal performance. With its particle emission rate as low as 1.54 g/h and its high-performance combustion system, environmentalists have never been as happy with wood heating. The Inspire Collection celebrates our past and embraces our future as our team is committed more than ever to our industry's contribution to sustainability. A dream opportunity on the latest trends!



Required: narrow, narrow U shape or cuttable faceplate.

Firebox volume:  
2.4 cu. ft.

Maximum log length:  
20".

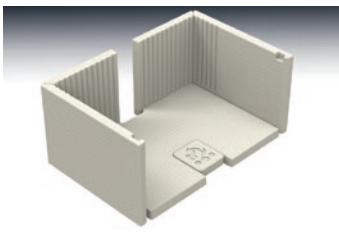


Narrow U shape faceplate.

Exterior dimensions:  
25 1/8" H  
30 1/8" W  
21 1/8" D



Cuttable faceplate.



Optional: refractory panel kit for insert.

Blower included.



Maximum heat output, dry cordwood

**75,000 BTU/h**

Recommended heating area

**500 — 2,100 sq. ft.\***

Fuel



Size

**L**



**PAPYRUS**  
Fireplace tool sets  
See page 33

Osburn 2000 insert with brushed nickel plated door overlay and trims and black faceplate kit.

Emissions  
**1.54 g/h**

Optimum efficiency  
**77%**

OB02016

**2000**  
Insert

With its 2.4 cubic foot firebox, the Osburn 2000 insert offers an alternative to the people who love its freestanding counterpart. The two models share the same high quality combustion properties and many of the same features. The Osburn 2000 comes with a standard high-power, heat-activated 144 CFM blower strategically positioned to redistribute the heat from the firebox into the room. The 2000 model is designed to receive an optional faceplate that can cover a masonry hearth up to 32 inches (81 cm) high and 50 inches (127 cm) wide. The door overlay is available in black or brushed nickel plated finishes. The faceplate trims are available in black or brushed nickel.

BEYOND  
CHARM



Required: black or brushed nickel plated cast iron door overlay.

Firebox volume:  
2.4 cu. ft.

Maximum log length:  
20".



Premium quality 144 CFM heat activated blower with variable speed control included.

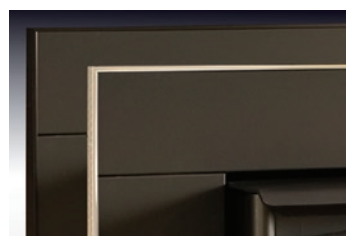
Exterior dimensions:  
23 1/8" H  
28 3/8" W  
26 3/8" D



Required: black faceplate kits. Regular (29" X 44") or Large (32" X 50").



Optional: firescreen.  
Optional: fresh air intake kit.



Optional: black or brushed nickel faceplate trims. Regular (29" X 44") or Large (32" X 50").



Optional: heat shield mantle shelf and combustible top surround.

\*See the complete technical data on pages 25 and 26.

Size

Fuel

Recommended heating area

Maximum heat output,  
dry cordwoodEPA  
CSA  
B415.1-10

L



750 — 2,100 sq. ft. \*

75,000 BTU/h



## MATRIX Insert

OB02021

Emissions  
3.9 g/hOptimum efficiency  
77.2%Matrix insert with cast iron  
faceplate.

BEYOND

CONTEMPORARY

The Matrix wood insert defines the new standards for contemporary look and performance. This appliance looks like a fireplace, but has all the advantages of an insert. Its faceplate and blower assembly were developed to allow a flush finish with the masonry fireplace. Cast iron was selected as the material of choice for this clean and modern unit. Installation into larger openings is facilitated by the use of an optional sheet metal backing plate. This insert will surely become the focal point of the room.



Reversible cast iron door  
(hinged on left or right).

Firebox volume:  
2.4 cu. ft.

Maximum log length:  
20".

Cast iron faceplate (included):  
25 1/4" H x 36 1/8" W



Optional: firescreen.

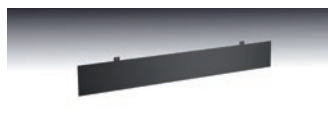
Exterior dimensions:

With faceplate (included):  
25 1/8" H  
36 1/8" W  
23 1/8" D

Without faceplate:  
23 3/8" H  
28 3/8" W  
23 1/8" D



Optional: faceplate backing  
plate panels (29" x 44" / 29"  
x 50").



Optional: bottom faceplate  
backing plate panels  
(44" x 6" / 50" x 6").

Optional: fresh air intake kit.



Projection kit for insert  
2" or 4".

*Requires the optional faceplate  
backing plate for installation.*



Premium quality 90 CFM  
heat activated blower  
included.



Maximum heat output,  
dry cordwood

**70,000 BTU/h**

Recommended heating area

**800 — 2,000 sq. ft.\***

Fuel



Size

**L**



**INEO**  
Fireplace tool sets  
See page 33

Osburn 2200 with black cast iron door overlay, faceplate kit and trims.

Emissions  
**2.7 g/h**

Optimum efficiency  
**75%**

OB02201

**2200**  
Insert

The 2200 insert, with its focus on efficiency and elegance, is an excellent example of Osburn's know-how. The bay window adds a touch of style to your fireplace and also improves its heat output. The 2200 insert is designed to offer a long Maximum burn time in low combustion mode, and can provide comfort for many hours – even overnight\* – thanks among other things to its premium quality blower. The Osburn 2200 insert offers superior features in an eye-catching, high performance wood insert.

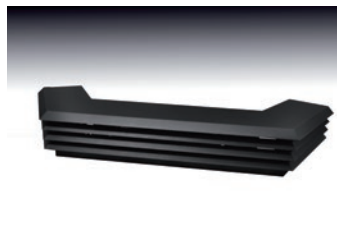
BEYOND  
STYLE



Required: black or brushed nickel plated cast iron door overlay.

Firebox volume:  
2.3 cu. ft.

Maximum log length:  
18".

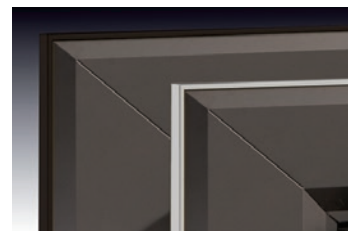


Premium quality 130 CFM heat activated blower with variable speed control included.

Exterior dimensions:  
23 1/8" H  
32 7/8" W  
28 3/8" D



Required: black faceplate kits. Regular (29" X 44"), Medium (32" X 44") or Large (32" X 50").



Optional: black or brushed nickel faceplate trims. Regular (29" X 44"), Medium (32" X 44") or Large (32" X 50").

\*See the complete technical data on pages 25 and 26.

Size	Fuel	Recommended heating area	Maximum heat output, dry cordwood	
<b>XL</b>		<b>1,000 — 2,700 sq. ft.*</b>	<b>100,000 BTU/h</b>	



**2400**  
Insert

OB02401

Emissions  
3.9 g/h

Optimum efficiency  
78%

Osborn 2400 insert with brushed nickel plated door overlay and trims and black faceplate kit.

BEYOND

HEAT

The 2400 insert has the same firebox as its freestanding counterpart and will transform any conventional masonry fireplace into a highly efficient heating system. Its 100,000 BTU/h, combined with a 3.4 cubic foot firebox, will help you to rest easy during those long winter nights. Its large glass window offers a perfect view of the fire.



Required: black or brushed nickel plated cast iron door overlay.

Firebox volume:  
3.4 cu. ft.

Maximum log length:  
21".

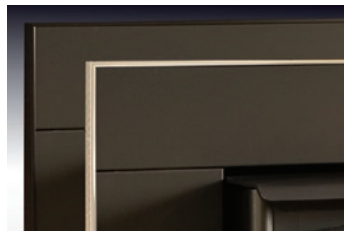


Premium quality 144 CFM heat activated blower with variable speed control included.

Exterior dimensions:  
23" H  
31 1/8" W  
28" D



Required: black faceplate kits.  
Regular (29" X 44"),  
Medium (32" X 44") or  
Large (32" X 50").



Optional: black or brushed nickel faceplate trims.  
Regular (29" X 44"),  
Medium (32" X 44") or  
Large (32" X 50").

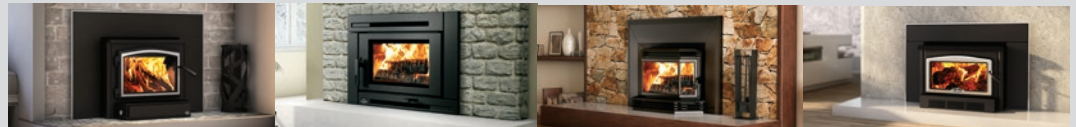


# TECHNICAL DATA: WOOD INSERTS

## GENERAL FEATURES: WOOD INSERTS



MODELS	1100 Insert	1600 Insert	1800 Insert	Inspire 2000 Insert
Color	Metallic Black	Metallic Black	Metallic Black	Metallic Black
Maximum burn time (Note 1)	6 hours	6 hours	6 hours	8 hours
Combustion technology	Non-catalytic	Non-catalytic	Non-catalytic	Non-catalytic
Recommended heating area (Note 1)	250 to 1,400 sq. ft	500 to 1,800 sq. ft	500 to 1,800 sq. ft	500 to 2,100 sq. ft
Maximum heat output - dry cordwood	50,000 BTU/h (14.6 kW)	65,000 BTU/h (19.0 kW)	65,000 BTU/h (19.0 kW)	75,000 BTU/h (22.0 kW)
Overall heat output rate (min. to max.)	11,000 BTU/h (3.2 kW) to 35,000 BTU/h (10.2 kW)	11,800 BTU/h (3.5 kW) to 42,400 BTU/h (12.4 kW)	9,700 BTU/h (2.8 kW) to 36,300 BTU/h (10.6 kW)	14,800 BTU/h (4.3 kW) to 28,600 BTU/h (18.3 kW)
Door opening size (W x H)	15 5/8" x 8 3/8"	15 5/8" x 8 1/2"	18 3/8" x 8 1/2"	20" x 8 1/4"
Firebox dimensions (W x H x D)	18 1/8" x 11 1/2" x 12 5/8"	18 1/8" x 12 7/8" x 14 3/4"	16 7/8" x 11 1/2" x 14 5/8"	21 1/4" x 11 7/8" x 16 7/8"
Firebox volume	1.5 cu. ft.	2.0 cu. ft.	1.8 cu. ft.	2.4 cu. ft.
Average particulate emissions rate	2.9 g/h	4.4 g/h	2.8 g/h	1.54 g/h
Glass viewing area (W x H)	15" x 8 3/8"	15" x 8 3/8"	22 3/4" x 9 3/8"	20 1/4" x 9 1/2"
Door frame	Cast iron with logo	Cast iron with logo	Steel	Cast iron
Maximum log length	17"	17"	16"	20"
Optimum efficiency	75%	80%	75%	77%
Flue spigot diameter	6"	6"	6"	6"
Glass type	Ceramic glass			
Adjustable handle	Yes			
Self-cleaning glass system	Yes			
Warranty	Lifetime, limited			
Test standard - Safety	According to UL 1482, UL 737, ULC S628, NFPA 211 and CSA B365 applicable in Canada and the United States			
Test standard - Emissions / efficiency	EPA / CSA B415.1-10			



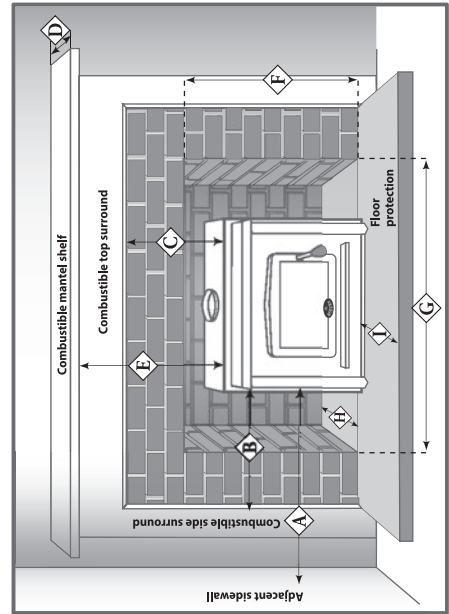
MODELS	2000 Insert	Matrix Insert	2200 Insert	2400 Insert
Color	Metallic Black	Metallic Black	Metallic Black	Metallic Black
Maximum burn time (Note 1)	8 hours	8 hours	8 hours	10 hours
Combustion technology	Non-catalytic	Non-catalytic	Non-catalytic	Non-catalytic
Recommended heating area (Note 1)	500 to 2,100 sq. ft	750 to 2,100 sq. ft	800 to 2,000 sq. ft	1,000 to 2,700 sq. ft
Maximum heat output - dry cordwood	75,000 BTU/h (22.0 kW)	75,000 BTU/h (22.0 kW)	70,000 BTU/h (20.5 kW)	100,000 BTU/h (29.3 kW)
Overall heat output rate (min. to max.)	14,800 BTU/h (4.34 kW) to 28,600 BTU/h (8.38 kW)	12,500 BTU/h (3.7 kW) to 31,300 BTU/h (9.2 kW)	11,700 BTU/h (3.4 kW) to 30,400 BTU/h (8.9 kW)	13,300 BTU/h (3.9 kW) to 44,100 BTU/h (12.9 kW)
Door opening size (W x H)	17 1/2" x 9"	17 1/2" x 8 3/4"	19 1/8" x 9"	19 1/2" x 8"
Firebox dimensions (W x H x D)	21" x 11 7/8" x 16 3/4"	21" x 11 7/8" x 16 1/2"	19 1/8" x 12 1/4" x 17 1/4"	22 1/2" x 13 1/2" x 19 3/8"
Firebox volume	2.4 cu. ft.	2.4 cu. ft.	2.3 cu. ft.	3.4 cu. ft.
Average particulate emissions rate	1.54 g/h	3.9 g/h	2.7 g/h	3.9 g/h
Glass viewing area (W x H)	17 1/8" x 10 1/4"	19 5/8" x 11 7/8"	26 1/4" x 10 3/8"	19 1/8" x 8 7/8"
Door frame	Cast iron	Cast Iron	Steel	Cast iron with logo
Maximum log length	20"	20"	18"	21"
Optimum efficiency	77%	77.2%	75%	78%
Flue spigot diameter	6"	6"	6"	6"
Glass type	Ceramic glass			
Adjustable handle	Yes			
Self-cleaning glass system	Yes			
Warranty	Lifetime, limited			
Test standard - Safety	According to UL 1482, UL 737, ULC S628, NFPA 211 and CSA B365 applicable in Canada and the United States			
Test standard - Emissions / efficiency	EPA / CSA B415.1-10			

Note 1 : Recommended heating area and maximum burn time may vary subject to location in home, chimney draft, heat loss factors, climate, fuel type and other variables. The recommended heated area for a given appliance is defined by the manufacturer as its capacity to maintain a minimum acceptable temperature in the designated area in case of a power failure.

SPECIFIC FEATURES: WOOD INSERTS

MODELS	1100 Insert	1600 Insert	1800 Insert	Inspire 2000 Insert	2000 Insert	Matrix Insert	2200 Insert	2400 Insert
Exterior dimensions and weight								
Height	21 1/8"	22 5/8"	20 3/8"	25 1/8"	23 1/8"	25 1/8"	23 1/8"	23"
Width	25 1/2"	25 7/8"	30"	30 1/8"	28 3/8"	36 1/8"	32 7/8"	31 1/8"
Depth	22 1/4"	26"	25 3/8"	21 1/8"	26 3/8"	23 1/8"	28 3/8"	28"
Weight	297 lb (135 kg)	378 lb (172 kg)	307 lb (139 kg)	484 lb (220 kg)	407 lb (185 kg)	484 lb (220 kg)	380 lb (172 kg)	512 lb (232 kg)
Clearances from unit to combustible materials (see figure 1)								
A- Adjacent sidewall	13"	16"	17"	16"	16"	16"	17"	14"
B- Combustible side surround	9"	10"	10"	9"	12"	12"	10"	8"
C- Combustible top surround	27"	16"	14"	27"	20"	20"	14"	20 1/2"
Reduced clearance with heat shield for combustible top surround	N/A	N/A	N/A	N/A	11"	N/A	N/A	N/A
D- Combustible mantle shelf dimension	6" 8" 10" 12"	9 1/2" 12"	6" 8" 10" 12"	6" 8" 10" 12"	8" 10" 12"	8" 10" 12"	6" 8" 10" 12"	6" 8" 10" 12"
E- Minimum clearance from a combustible mantle shelf	27" 29" 31" 33"	22"	22" 24" 26" 28"	27" 27" 27" 27"	22" 24" 26"	18 5/8" 20 5/8" 22 5/8"	22" 22 1/2" 22 1/2"	25 1/2" 27 1/2" 29 1/2" 31 1/2"
F, G, H- Minimum fireplace opening (Height x Width x Depth)	21 3/4" x 26" x 12 7/8"	22 5/8" x 26 3/8" x 14 3/8"	20" x 23 3/8" x 14 5/8"	23 3/4" x 28 7/8" x 19 5/8"	23 3/8" x 28 7/8" x 15 3/4"	23 3/4" x 28 7/8" x 19 5/8"	22 5/8" x 26 1/4" x 17 3/8"	23 1/2" x 31 5/8" x 16 1/4"
I- Minimum floor protection in front of unit (CAN / USA)	18" / 16"	18" / 16"	18" / 16"	18" / 16"	18" / 16"	18" / 16"	22" **	18" / 16"
Faceplate dimensions								
Regular in cast iron (included)	N/A	N/A	N/A	N/A	N/A	25 1/4" x 36 1/8"	N/A	N/A
Regular in steel	29" x 44"	29" x 44"	29" x 44"	N/A***	29" x 44"	N/A	29" x 44"	29" x 44"
Medium in steel	N/A	32" x 44"	32" x 44"	N/A***	N/A	N/A	32" x 44"	32" x 44"
Large in steel	N/A	32" x 50"	N/A	N/A***	32" x 50"	N/A	32" x 50"	32" x 50"
Faceplate trim kit	Black or brushed nickel	Black or brushed nickel	Black or brushed nickel	Black or brushed nickel	Black or brushed nickel	Black or brushed nickel	Black or brushed nickel	Black or brushed nickel
Faceplate backing plate panels	N/A	N/A	N/A	N/A	N/A	29" x 44" / 29" x 50"	N/A	N/A
Bottom faceplate backing plate panels	N/A	N/A	N/A	N/A	N/A	44" x 6" / 50" x 6"	N/A	N/A
Projection kit	N/A	N/A	N/A	N/A	N/A	2" or 4"	N/A	N/A
Blower	Included	Included	Included	Included	Included	Included	Included	Included
Black door overlay	Optional	Optional	Optional	N/A	Optional	Included	Optional	Optional
Brushed nickel plated door overlay	Optional	Optional	Optional	N/A	Optional	N/A	Optional	Optional

Figure 1



From door opening

\* The depth of the fireplace opening of the Matrix Insert can be reduce to 17 5/8" or 15 5/8" using the optional projection kit AC01323, sold separately. Note however that in order to install the optional projection kit AC01323, one of the optional faceplate backing plate kit AC01322 or AC01332 must be purchased separately to secure the projection kit to it.

\*\* This model in particular must have 16" in front of the blower housing. This distance is included in the "I" measurement of the above table.

\*\*\*The Inspire 2000 insert offers two choices of narrow faceplate and one cuttable faceplate.

Technical data & sizes contained in this brochure are for reference only. Any installation must be done according to the data and drawings detailed in the owner's manual.



Maximum heat output,  
dry cordwood

**75,000 BTU/h**

Recommended heating area

**750 — 2,100 sq. ft.\***

Fuel



Size

**L**



Stratford with brushed nickel plated cast iron door overlay and Prairie-style faceplate.

Emissions

4.4 g/h

Optimum efficiency

75%

OB04003

**STRATFORD**

BEYOND

DESIGN

Here's what you've been hoping to find, a decorative and efficient wood fireplace that meets EPA emissions standards. That's saying a lot, but the Osburn Stratford has much more to offer, including a 2.5 cubic foot firebox that's easy to access through double-cast iron doors. The Osburn Stratford will impress you with its distinctive style and exceptional Recommended heating area. Several options are available, including a air distribution systems for heating adjacent rooms (see page 32). With the Osburn Stratford, there's a world of possibilities waiting for you!



Required: black or brushed nickel plated cast iron door overlay.

Optional faceplate:  
Prairie style, traditional or traditional with brushed nickel accents.

Firebox volume:  
2.5 cu. ft.



Required: traditional, traditional with brushed nickel accents or "Prairie-style" faceplate.

Exterior dimensions:  
47 1/8" H  
37 7/8" W  
29 5/8" D

Maximum log length:  
21".



Optional: forced air distribution kit controlled by wall thermostat (see page 32).

Optional: 6" x 25' insulated flex pipe for forced air distribution kit.

Optional: hot air gravity distribution kit traditional style or modern with adjustable pipes. (see page 32).



Twin premium quality heat activated 176 CFM blowers included.

Fresh air intake kit adapter 3" or 4" diameter included.

Optional: 3" flexible insulated fresh air intake pipe (10 feet).

\*See the complete technical data on pages 30 and 31.

Size

Fuel

Recommended heating area

Maximum heat output,  
dry cordwoodCSA  
B415.1-10Montreal  
APPROVED  
<2.5 g/h**ONLY  
AVAILABLE  
IN CANADA****L****750 — 2,200 sq. ft. \*****80,000 BTU/h**

## EVEREST

OB04015

Emissions  
2.3 g/hOptimum efficiency  
73.9 %Everest, wood fireplace with  
faceplate and retractable doors.

BEYOND

HEAT

**Beyond Fire!** Give life to your living space with this wood-burning fireplace; its sleek modern lines blend with any decor.

**Heat.** Make every evening a perfect one by remaining warm by the hearth. This fireplace heats an area of up to 2,200 square feet.

**Simplicity.** The Everest easily integrates into the look of your room. Its façade has retractable double doors and is available in either a black or brushed nickel finish.

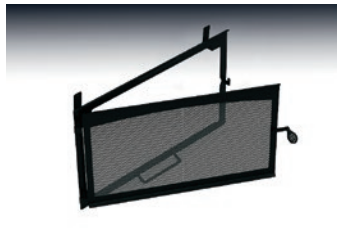
**Reliability.** This high-quality fireplace is carefully manufactured in Quebec.

Enjoy the benefits of its reassuring presence during the long cold winter months.



Required: black or brushed nickel plated cast iron door overlay.

Firebox volume:  
3.1 cu. ft.



Optional: firescreen.

Exterior dimensions:  
40 5/8" H  
37 1/8" W  
29 1/4" D

Maximum log length:  
16".



Optional: forced air distribution kit controlled by wall thermostat (see page 32).

Optional: 6" x 25' insulated flex pipe for forced air distribution kit.

Optional: hot air gravity distribution kit traditional style (see page 32).



Twin premium quality heat activated 144 CFM blowers included.

Fresh air intake kit adapter 4" diameter included.

Optional: 4" flexible insulated fresh air intake pipe (10 feet).



Maximum heat output, dry cordwood

**95,000 BTU/h**

Recommended heating area

**1,000 – 2,800 sq. ft.\***



Size

**XL**

A hot start is always your best guarantee for a clean burn. The Horizon uses an automated combustion air intake system that allows the fire to reach an ideal temperature before going into slow burn mode. The result is very low emissions, without the need for a catalytic combustor.



Horizon, extra-large wood-burning fireplace. Installation requires an 8" chimney.

Emissions  
**1.6 g/h**

Optimum efficiency  
**69.7 %**

OB04010

# HORIZON

This wood fireplace offers peace of mind due to the combination of energy efficiency and clean heating. A simple solution; its clean design suits any type of décor.

**Large fireplace.** Behind its large glass door, the 4.28 cubic foot combustion chamber can hold an impressive 60 lb of wood.

**Low emissions.** This energy efficient fireplace complies with the EPA's clean-air standards (only 1.6 g/h of emissions).

**High efficiency.** The Horizon fireplace is capable of heating large spaces and burns for 10 hours.

## BEYOND SIZE



Required: Prairie-style faceplate.

Firebox volume:  
4.28 cu. ft.



Required: Classic moulded refractory brick panels.

Exterior dimensions:  
43 3/8" H  
50 3/4" W  
31 3/4" D

Maximum log length:  
25"



Optional: forced air distribution kit controlled by wall thermostat (see page 32).

Optional: 6" x 25' insulated flex pipe for forced air distribution kit.



Premium quality 176 CFM heat activated blower with variable speed control included.

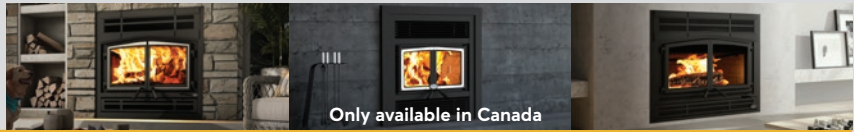


Option: warm air circulation grille - modern style.

\*See the complete technical data on pages 30 and 31.

# TECHNICAL DATA: WOOD FIREPLACE

## GENERAL FEATURES: WOOD FIREPLACE



MODELS	Stratford	Everest	Horizon
Color	Metallic black	Metallic black	Metallic black
Maximum burn time (note 1)	9 hours	9 hours	10 hours
Combustion technology	Non-Catalytic	Non-Catalytic	Non-Catalytic
Recommended heating area (note 1)	750 to 2,100 sq. ft.*	750 to 2,200 sq. ft.*	1,000 to 2,800 sq. ft.*
Maximum heat output - dry cordwood	75,000 BTU/h (22.0 kW)	80,000 BTU/h (23.5 kW/h)	95,000 BTU/h (27.8 kW)
Overall heat output rate (min. to max.)	11,500 BTU/h (3.4 kW) to 30,500 BTU/h (8.9 kW)	13,622 BTU/h (4.0 kW) to 28,629 BTU/h (8.4 kW)	16,610 BTU/h (4.9 kW) to 43,021 BTU/h (12.6 kW)
Door opening dimensions (W x H)	25 1/2" x 10 7/8"	20 3/4" x 10 7/8"	33" x 12 3/4"
Firebox dimensions (W x D x H)	20 7/8" x 12 7/8" x 12"	18 7/8" x 17" x 16 7/8"	25 3/8" x 17 7/8" x 17"
Firebox volume	2.5 cu. ft..	3.1 cu. ft.	4.28 cu. ft.
Average particulate emissions rate	4.4 g/h	2.3 g/h	1.6 g/h
Glass viewing area (W x H)	22 1/4" x 12 3/8"	18 3/4" x 11 3/8"	29 3/4" x 13 1/2"
Door frame	Double, glass with cast iron frame	Double, glass with cast iron frame	Double, glass with cast iron frame
Maximum log length	21"	16"	25"
Log positioning	East-west	East-west	East-west
Optimum efficiency	75 %	73.9 %	69.7 %
Mobile home approved	No	No	No
Flue spigot diameter	6"	6"	8"
Glass type	Ceramic glass	Ceramic glass	Ceramic glass
Adjustable handle	Yes	Yes	Yes
Self-cleaning glass system	Yes	Yes	Yes
Warranty	Lifetime, limited	Lifetime, limited	Lifetime, limited
Test standard - Safety	As per ULC-S610/UL 127 applicable in Canada and in the USA		
Test standard - Emissions / efficiency	EPA / CSA B415.1-10	CSA B415.1-10	EPA / CSA B415.1-10

\*With forced air distribution kit.

## LISTED CHIMNEYS, MANUFACTURERS, BRANDS AND TYPES (see note 2): WOOD FIREPLACE

MANUFACTURERS	BRANDS	TYPES	Stratford	Everest	Horizon
Olympia Chimney/SBI Venting Division	Ventis	1" Solid Pack	X	X	X
SBI Venting Division	Nexvent	1" Solid Pack	X	X	X
American Metal	HSS	AC Triple Wall	X	X	X
American Metal	HS	AC Triple Wall	X	X	X
ICC	Excel 2100	1" Solid Pack	X		
DuraVent	Dura Tech	1" Solid Pack	X		
DuraVent	Dura Tech Canada DTC	1" Solid Pack	X		
DuraVent	Dura Plus HTC	2" Solid Pack	X	X	X
DuraVent	Dura Plus	AC Triple Wall	X	X	X
DuraVent	Dura Tech Premium	2" Solid Pack	X	X	X
Metal Fab	Temp Guard	1" Solid Pack	X		
Security Chimney	ASHT+	1" Solid Pack	X		
Security Chimney	S-2100 +	2" Solid Pack	X	X	X
Selkirk	UltimateOne	1" Solid Pack	X		
Selkirk	Ultra-Temp (UT)	1" Solid Pack	X		
Selkirk	Super Pro (SPR)	1" Solid Pack	X		
Selkirk	Super Vent (JSC)	1" Solid Pack	X		
Selkirk	Hart & Cooley (TLC)	1" Solid Pack	X		
Selkirk	Sure-Temp (ST)	1" Solid Pack	X		
Selkirk	Super Vent 2100 (JM)	2" Solid Pack	X	X	X
Selkirk	CF Sentinel (CF)	2" Solid Pack	X	X	X
Selkirk	Super Pro 2100 (ALT)	2" Solid Pack	X	X	X

Note 1 : Recommended heating area and maximum burn time may vary subject to location in home, chimney draft, heat loss factors, climate, fuel type and other variables. The recommended heated area for a given appliance is defined by the manufacturer as its capacity to maintain a minimum acceptable temperature in the designated area in case of a power failure.

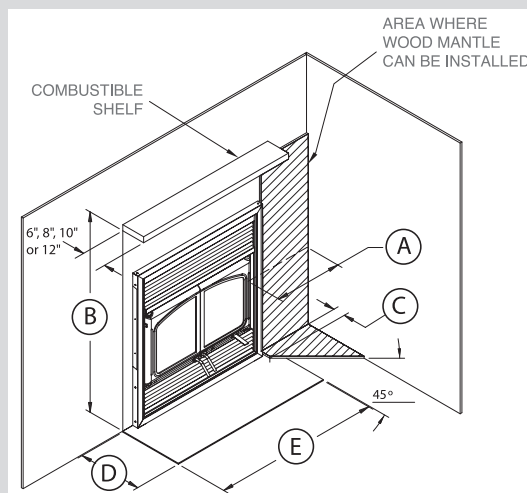
Note 2 : Specific components may be required depending on the chimney manufacturer.

Technical data contained in this brochure are for reference only. Any installation must be done according to the data and drawings detailed in the owner's manual.

## SPECIFIC FEATURES: WOOD FIREPLACE



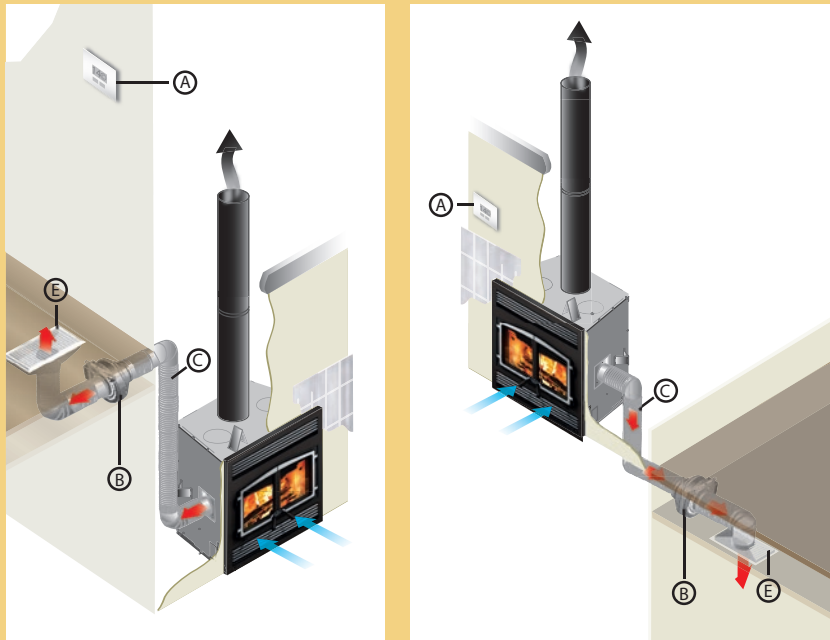
MODELS	Stratford	Everest	Horizon
<b>Exterior dimensions (including spacers) and weight</b>			
Height	47 1/8"	40 5/8"	43 3/8"
Width	37 7/8"	37 1/8"	50 3/4"
Depth	29 5/8"	29 1/4"	31 3/4"
Weight	424 lb (192 kg)	435 lb (198 kg)	550 lb (250 kg)
<b>Clearances to combustible materials (see image below)</b>			
A- Side wall	17"	21"	24"
Back wall	0"	0"	0"
Sides	0"	0"	0"
Floor (under the fireplace)	0"	0"	0"
Ceiling	80"	84"	84"
Non combustible surround (top)	24"	0"	84"
Non combustible surround (sides)	1 1/4"	0"	3 1/16"
B- Combustible mantle shelf dimension	6" 8" 10" 12"	6" 8" 10" 12"	N/A
Minimum clearance from a combustible mantle shelf (from the base of the fireplace)	58" 60" 62" 64"	60" 62" 64" 66"	
C- Side mantle	3"	N/A	8"
D- Minimum floor protection — front	16"	16"	32"
E- Minimum floor protection — width	41 1/2"	36 3/4"	49"
Black cast iron door overlay	Optional	Optional	Included
Brushed nickel plated cast iron door overlay	Optional	Optional	N/A
Traditional style faceplate	Optional	Included	N/A
Traditional faceplate with brushed nickel accents	Optional	N/A	N/A
Prairie style faceplate	Optional	N/A	Optional
Hot air gravity distribution kit - traditional style (see page 32)	Optional	Optional	N/A
Hot air gravity distribution kit - modern with adjustable pipes (see page 32)	Optional	N/A	N/A
Forced air distibution kit (see page 32)	Optional	Optional	Optional
Warm air circulation grille – modern style	N/A	N/A	Optional
Rigid firescreen	Optional	Optional	N/A



Technical data contained in this brochure are for reference only. Any installation must be done according to the data and drawings detailed in the owner's manual.

# IT'S NOW TIME TO MANAGE HEAT DISTRIBUTION!

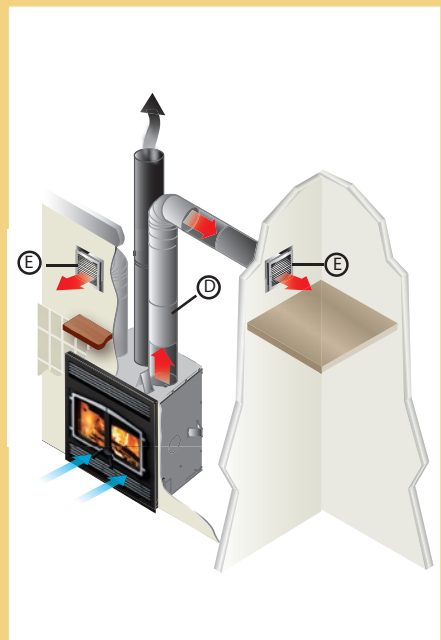
EPA certified wood fireplaces generate a lot of heat. For the most part, they generate too much for the room where they are located. Therefore, you need to manage the excess heat and send it where it is needed. To provide a solution, our research and development laboratory has designed the HEAT MANAGEMENT SYSTEM, an innovative technology that allows the recovery of the heat produced during combustion to redirect it into distribution ducts to heat other areas in your home.



## Forced air distribution kit

This system allows you to manage the heat distribution automatically. Using a wall thermostat, you can select the temperature you want to maintain in the room where the fireplace is located. Once the thermostat is satisfied, the excess heat is redirected to another room up to 50 feet (15 m) away from the fireplace using a 300 CFM blower. That way, you can enjoy a nice fire in your living room without the discomfort of excess heat generated by your Osburn fireplace.

The system can also be used to supplement heat in a room remote from the fireplace. For this type of application, the thermostat needs to be positioned in the desired room and programmed with the temperature to be maintained. The system, now in “heat mode”, will activate the blower as long as the temperature in the remote room is not achieved and that the fireplace has enough heat to distribute.



*Osburn also offers you another way to distribute excess heat into your home with the help of a hot air gravity distribution kit.*

## Hot air gravity distribution kit

The hot air gravity distribution kit allows you to bring hot air into the same room as the fireplace, in adjacent rooms, or up-stairs at a maximum distance of 10' (3 m). The minimum height of the hot air duct must be 68" (1.7 m) measured from the base of the fireplace to the top of the hot air register.

Suggested installation : A) Wall thermostat B) 300 CFM blower C) Hot air flexible pipe D) Hot air rigid pipe E) Air register.  
The information contained in this page is for information purposes only. For a detailed part list of kits content, please refer to the owner's manuals.

For more details about the installation requirement of the **forced air distribution kit** or the **hot air gravity distribution kit**, visit [www.osburn-mfg.com/en/service-support/heat-distribution-system](http://www.osburn-mfg.com/en/service-support/heat-distribution-system)



# ACCESSORIES

## FIREPLACE TOOL SETS



CODE: #AC02620

### DUPLEX

Contains four instruments: poker, broom, shovel and clamp. The clean lines and combination of steel and wood construction make a strong contemporary design statement.

Height of accessories:  
19 1/2" (50 cm)

Made in France.



CODE: #AC02621

### INEO

Contains four instruments: poker, broom, shovel and clamp. The clean lines and simplicity make a strong contemporary design statement.

Height of accessories:  
19 1/2" (50 cm)

Made in France.



CODE: #AC02622

### PAPYRUS

Contains four instruments: poker, broom, shovel and clamp. The dramatic use of steel makes a strong contemporary design statement.

Height of accessories:  
19 1/2" (50 cm)  
Base diameter:  
7 1/2" (19 cm)

Made in France.



CODE: #AC02350

### EQUISS

Made of high quality steel. Its integrated handles make handling easier. Two identical parts that intersect easily. Assembly and disassembly in seconds for compact storage.

Height: 15 1/4" (38 cm)  
Length: 24 1/4" (61 cm)  
Depth: 13" (33 cm)  
Weight: 28 1/2 lb (13 kg)

Made in Canada.

*new*



CODE: #AC02628

### NORDIK

Contains four accessories: poker, broom, shovel and tongs. Its wooden base and steel structure gives it an industrial look, perfect for contemporary or rustic spaces.

Support height:  
21 7/8" (53 cm)  
Length: 9 1/2" (24 cm)  
Depth: 4 3/4" (12 cm)  
Made in France.

*new*



CODE: #AC02629

### PETALE

Contains four accessories: poker, broom, shovel and tongs. A nice option for those who want to camouflage tools for a more decorative look.

Height:  
20" (51 cm)  
Diameter:  
7 1/2" (19 cm)  
Made in France.

*new*



CODE: #AC02630

### FOREST

Contains four accessories: poker, broom, shovel and tongs. A beautiful addition to your rustic decor, both for the cottage and at home, thanks to its forest relief.

Height:  
20" (51 cm)  
Diameter:  
7 1/2" (19 cm)  
Made in France.

*new*



CODE: #AC02631

### SPEKTRA

Contains four accessories: poker, broom, shovel and tongs. You will appreciate its futuristic look for a unique atmosphere.

Height:  
20" (51 cm)  
Diameter:  
7 1/2" (19 cm)  
Made in France.

# ACCESSORIES

## OPTIONS



### GLASS HEARTH PAD PROTECTION

This light-colored tempered glass hearth pad is particularly resistant to shocks. This glass plate is a safe and durable choice for your fireplace and will add elegance to your decor. Its manufacture is precise and neat: polished edges and non-cutting corners.

Four sizes:

- 54" x 46 3/4" (AC02703)
- 44" x 36" (AC02704)
- 50" x 18" (AC02760)
- 70" x 20" (AC02761)

Thickness: 10 mm



### CERTIFIED MODULAR HEAT SHIELD

A simple, attractive, and safe solution to effectively reduce wall clearances, and ensure maximum protection of the floor. Easy assembly, the modular system will blend in with any room decor. Powder coated steel panels offering superior durability and quality.



### NON-COMBUSTIBLE MANTELS

Incredibly realistic wood-like detailing. Two shades: washed cedar and tavern brown.

Two lengths: 60" and 72"

Height: 8"

Depth: 8"

- 60" washed cedar (AC02780)
- 72" washed cedar (AC02781)
- 60" tavern brown (AC02782)
- 72" tavern brown (AC02783)

\*Check local codes for approved alternatives. Any installation must be done according to the data and drawings detailed in the owner's manual.

Limited **LIFETIME**  
*Warranty*



**SCHOTT**  
**ROBAX**®

For more details go to:

[www.osburn-mfg.com](http://www.osburn-mfg.com)

**OSBURN**

**LIMITED LIFETIME  
WARRANTY**



## on Robax Ceramic Glass

The OSBURN-SCHOTT ROBAX system is one of the highest quality glass and heater product combination on the market. This allows OSBURN to offer a Limited Lifetime Warranty on Robax ceramic glass for all OSBURN appliances.

Conducted consumer studies identify that people want an unobstructed view of the fire, but without compromising safety. The glass “shield” is seen as the needed protection from the fire’s unpredictable aspects. OSBURN chose the SCHOTT ROBAX solution delivering all of the benefits that a consumer wants out of a fire but without the risks associated to it.

Because the way the entire system works together (SCHOTT ROBAX ceramic glass and OSBURN technology), it is the most efficient glass solution available in the market given its high IR transmission values and its high temperature resistance. A high IR transmission means that the heat produced inside the firebox is transferred through the glass more efficiently. The OSBURN-SCHOTT ROBAX ceramic glass can withstand the highest temperatures of any glass on the market.



*Aspen*  
*Southern Ledge*stone  
**CULTURED STONE**®  
BY BORAL®

OSBURN  
PROUD PARTNER OF  
**CANADIAN**  
**STONE**

# WHY choose



### C-CAST *baffle*

- Space shuttle **QUALITY**
- Resistant up to **2800°F**

### RUGGED *steel*

- **5/16"** top thickness
- **EXTENDED HEAT** radiation

### CERAMIC *glass*

- **ALL AROUND** solid glass  
retainer system
- **LIFETIME WARRANTY**  
*even on accidental breakage*

### HIGH DENSITY *firebricks*

- **Impact RESISTANT**
- Superior **HEAT RELEASING**  
*capabilities*

MADE IN CANADA  
NORTH AMERICAN STEEL



PUB047A

