

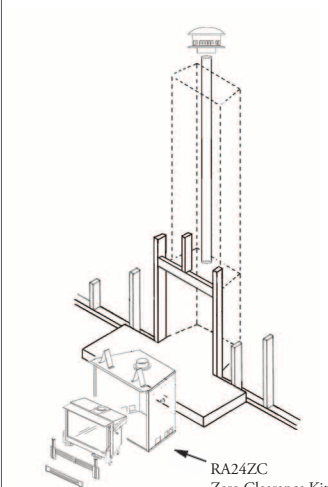
Upgrade the design and efficiency of your existing fireplace

RETROFIRE COMPONENTS

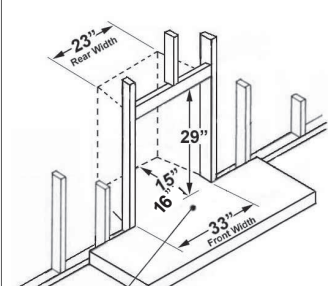
ENGINES	Model	Description
	RF24XBN	Retrofire - B-Vent - Natural Gas
	RF24XBP	Retrofire - B-Vent - Propane
	RF24IDN	Retrofire - Direct Vent - Natural Gas
	RF24IDP	Retrofire - Direct Vent - Propane
FRETS	RA24AV	Avant-Garde Fender - Vintage Iron
	RA24CV	Contemporary Fender - Vintage Iron
	RA24TB	Traditional Fender - Black
ACCESSORIES	758CCB	Clearview Cast Fret
	1225VFB	Ventana Fret - Black
	1236MAP	Metropolis Andiron - Nickel Plated
	RA24ZC	Retrofire Zero Clearance Kit (B-vent model only)
	RA24DS	Draw Screen
	RA24FS	Fixed Screen
	741SFB	Contemporary Front - Black
	741SVI	Contemporary Front - Vintage Iron
	743FVI	FenderFire Double Door Front
	744FVI	FenderFire Single Door Front
	715CVI	Cast Surround
	745CFV	Clearview Front Kit - Vintage Iron
	746CTK	3 Sided Contour Trim - Black
	746VIK	3 Sided Contour Trim - Vintage Iron
	747DTK	3 Sided Deluxe Trim - Black
747VIK	3 Sided Deluxe Trim - Vintage Iron	
748CTK	4 Sided Contour Trim - Black	
748VIK	4 Sided Contour Trim - Vintage Iron	
749DTK	4 Sided Deluxe Trim - Black	
749VIK	4 Sided Deluxe Trim - Vintage Iron	
750OCP	Oversized Closure Kit - Black	
750OVI	Oversized Closure Kit - Vintage Iron	
751LTK	Lift Trim Kit	
752BTK	Base Trim Kit	
555CFK	Circulating Fan Kit - optional	
1265WSK	Wall Switch Kit - optional (direct vent model only)	

NEW CONSTRUCTION

B-Vent Zero Clearance Installation Using New/Existing B-Vent

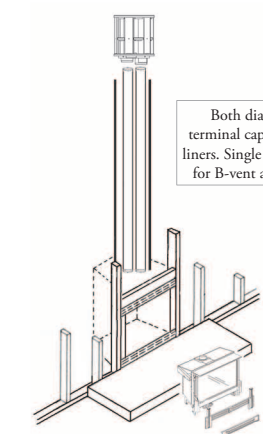


MIN. FRAMING DIMENSIONS
(For Retrofire Zero Clearance Kit)

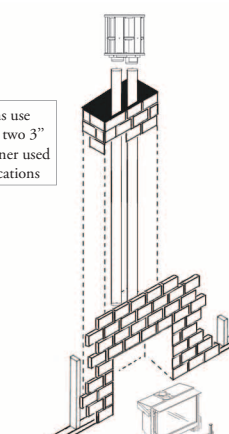


EXISTING FIREPLACE OPENING

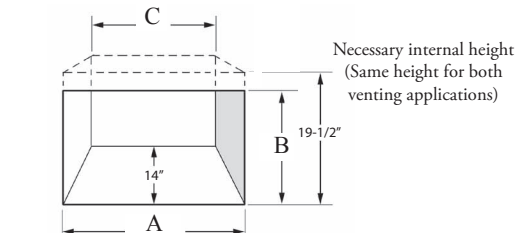
Wood Burning to Gas Upgrade of Existing Factory Built Fireplace



Wood Burning to Gas Upgrade of Existing Masonry Fireplace



MIN. CAVITY REQUIREMENTS
(Existing Fireplace)



Vent Type	A	B - Height to bottom of smoke curtain	C
Direct Vent	27"	17"	18"
B-Vent	29"	18"	20"

DECORATIVE CAST IRON FRETS (OPTIONAL ACCESSORY)

← 1225VFB Fret (Black)

RA24CV Fret →
(Vintage Iron)

RA24AV Fret →
(Vintage Iron)

← RA24TB Fret (Black)

Certified to ANSI Z21.88/ CSA 2.33 Vented Gas Fireplace Heater Standard/ CAN 1 - 2.17 Gas Fired Appliances For Use at High Altitude/
** EnerGuide Ratings and Outputs have been determined without a fan/blower, using the CSA P4.1-02 test method

MODEL/FUEL

Model	Fuel	Max. Input BTU/hr	Min. Input BTU/hr	EnerGuide Rating P4.1	Max. Output (w/out fan) BTU/hr **
RF24XBN	NG	20,500	12,500	54.2%	13,797
RF24XBP	LP	19,000	12,500	54.2%	12,787
RF24IDN	NG	24,000	10,500	58.8%	16,224
RF24IDP	LP	24,000	10,500	58.8%	16,224

Look for the EnerGuide Gas Fireplace Energy Efficiency Rating in this brochure
Based on CSA P4.1-02

NOT GLASS WILL CAUSE BURNS.
DO NOT TOUCH GLASS UNTIL COOLED.
NEVER ALLOW CHILDREN TO TOUCH GLASS.

Designed and manufactured by:
MILES INDUSTRIES
Copyright Miles Industries Ltd. 2013
Proudly made in North America
BRRETR13E
Printed on recycled paper

THE ORIGINAL RADIANT GAS FIREPLACE™
www.valorfireplaces.com

Your Authorized Valor Dealer:



Please Note: All product information is accurate at time of printing and is subject to change. Printed images may vary from actual product. Refer to the RF24 Retrofire engine manuals for product installation.

INTRODUCING THE RETROFIRE

Now there's a quick and easy way to turn your existing fireplace into an energy efficient heat source.

Engineered to keep heat inside your home (and not up the chimney), the Retrofire insert is designed for installation within existing wood burning fireplaces.

Room sealed and vented outside, the direct vent Retrofire eliminates smoke, messy ashes and cold drafts.

VALORSTAT PLUS REMOTE STANDARD WITH PURCHASE



The ValorStat Plus Remote gives you the power to select, adjust and program the desired temperature that you want.

Timer and thermostat mode help save energy and lower your home heating costs.

The ValorStat Plus also has the ability to turn your pilot light ON and OFF from the programmable remote control. *The ValorStat Plus is available with direct vent Retrofire models only.*

USE RADIANT HEAT SAFELY

Fireplace surfaces, in particular the glass viewing window, are extremely hot during operation and will remain hot for a period of time after the fireplace is turned off.

Contact with the hot glass can cause severe burns. Close adult supervision is required if there are young children, or at-risk individuals in the house.

Included with your purchase, a Valor Barrier Screen is recommended at all times. Install an approved after-market safety gate to keep toddlers, young children and at-risk individuals a safe distance from the fireplace. For more information visit www.valorfireplaces.com/safety.



FIREPLACE SAFETY

RETROFIRE FEATURES

- Steady, radiant warmth
- Low operating costs
- No chimney heat loss
- Ambience of a real log fire
- Increased energy efficiency
- Easy to use programmable remote control
- Quick installation - installs within existing cavity (allows you to keep your existing hearth & mantel)
- Four optional fret accessories (*see back page for images*)

WHAT MAKES THE RETROFIRE SO UNIQUE?

The Valor Retrofire is the most versatile, efficient gas fireplace upgrade for a variety of insert applications.

Specifically designed to “retro-fit” in masonry and factory-built wood burning fireplaces, the Retrofire can even accommodate arched or uneven facings.

Nestled within your existing fireplace opening, the Retrofire installs clean and does not require a front or trim for operation. Complete your fireplace with one of four optional frets (*see spec page for fret images*).

The Retrofire has been designed and tested to operate with existing fire screens (whether open or closed). Existing glass doors must be removed.



Installation in existing masonry wood burning fireplace cavity (Retrofire RF24IDN/P shown with 1225VFB Ventana Fret)

RETROFIRE vs OPEN GAS LOGS

With an open gas log set the damper is always open, allowing heat loss up the chimney (consuming an average of three times as much gas). Constant demand for air inside the home results in unwanted cold drafts, making an open gas log set a highly inefficient, expensive “heat” source alternative.

In comparison, the direct vent Retrofire effectively heats using a sealed firebox, designed to stop cold air drafts from entering the home. Advanced burner technology efficiently distributes radiant warmth. In addition, firebox heat exchangers naturally re-circulate warm air, eliminating the need for a fan.