

HEAT CHAMPION



GRATE HEATER



HEAT EXCHANGER



HEATING
SOLUTIONS



from the Heart of the Craftsman.....





A



B



C



D

- A. Air Intake and Outlet, Decorative Railing, Controls, and Hinge Detail of Blacksmith
- B. Optional Adjustable Stainless Steel Cooking Grill and Heat Exchange Tubes with Retainer Bar
- C. Decorative Banding with Rivets, and Keystone Applique' Detail of Blacksmith
- D. Back/Side View of Unit

Efficient & Unique

This "hybrid" combines the qualities of several heating products, namely the beauty of a glass door and the heat of an insert. Coupled with unique features like the optional Stainless Steel Grill and standard Pyro-Ceramic Glass, this product is a true Champion. Designed and hand-crafted in the USA.

FEATURES

- 8 gauge steel laser-cut faceplate
- 50/200 CFM variable speed blower with thermostatic control
- 45,000 estimated BTU*
- Easy install - just slide into fireplace
- 6 high-temp powder coat finishes
- Gasketed doors w/ pyro-ceramic glass
- Cabinet Mesh doors
- Custom sizes; ships completely assembled
- Optional Grill and Swinging Kettle Holder
- 165 lbs. estimated weight
- Power Cord can be routed out the left or right side of the unit.

**Actual heat production is dependant on type and quality of wood used and the performance of the fireplace.*



The new **MISSION HEAT CHAMPION** features a "mission" styled facade that can be decorated with a range of colors. Facade can also be customized with special design or custom text; call for details. Shown in Weathered Brown.



The **OLD WORLD HEAT CHAMPION** features Hammered Rivets, Strap Reinforcements, Distressed Edges and Bullet Hinges similar in style to our Old World glass doors. Shown in Burished Bronze.



The **BLACKSMITH HEAT CHAMPION** features Keystone Applique, Blacksmith Handles, Decorative Banding, and Door Accents similar to our Blacksmith of glass fireplace doors. Shown in Charcoal.



The **STANDARD HEAT CHAMPION** removes some of the embellishments of the Blacksmith and Old World models for a simpler, cleaner look with Flat Decorative Banding. Shown in Charcoal.



FEATURES

- » For wood-burning fireplaces
- » Slim 1-3/8" height
- » Retro fit into existing door installations
- » 90/125 CFM variable speed blower w/ thermostatic on/off fan control
- » Fan box is interchangeable from left to right
- » 35,000 estimated BTU *
- » Door NOT included
- » Black cover standard; adjustable width to 48"
- » Custom covers (*width and color*) available
- » If ordered with Stoll's Premium Bar Iron glass door, the door frame can be laser cut to replace the cover, for a smooth, integrated look.
- » 5 yr. limited warranty

**Actual heat production is dependant on type and quality of wood used and the performance of the fireplace. No guarantees are made on the heating capabilities of this product.*

§Fire shown inside closed doors is for display purposes only. DO NOT burn with doors closed unless doors have pyro-ceramic (stove) glass.



GRATE HEATER

The Grate Heater recovers lost heat from your wood-burning fireplace. The new slim profile allows you to increase the efficiency of your fireplace while keeping your existing door. When ordered with Stoll's Premium Bar Iron door, the cover can be replaced by laser-cut louvers in the main frame. ►

Simply Efficient



Laser-cut vents in Premium Bar Iron door can replace cover for seamless, color-matched integration of Grate Heater.



FEATURES

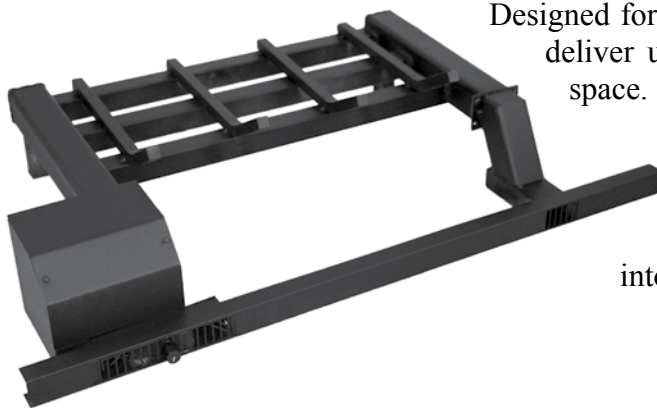
- » For vented gas log fireplaces
- » Slim 1-3/8" height
- » Retro fit into existing door installations
- » 60 CFM variable speed blower w/ thermostatic on/off fan control
- » Fan box is interchangeable from left to right
- » 20,000 estimated BTU *
- » Door NOT included
- » Black cover standard; adjustable width to 48"
- » Custom covers (*width and color*) available
- » If ordered with Stoll's Premium Bar Iron glass door, the door frame can be laser cut to replace the cover, for a smooth, integrated look.
- » 5 yr. limited warranty

**Actual heat production is dependant on type and quality of the gas log set and the performance of the fireplace. No guarantees are made on the heating capabilities of this product.*

\$Fire shown inside closed doors is for display purposes only. DO NOT burn with doors closed unless doors have pyro-ceramic (stove) glass.



Gas Log Heater



Designed for vented gas log fireplaces, the Gas Log Heater will deliver usable heat from your gas log set into your living space. Like all of our Heating Solutions products, the Gas Log Heater is hand-crafted in the USA by Stoll craftsman. Features such as interchangeable fan box, slim height, and variable speed fan control are standard. The cover can also be integrated into our Premium Bar Iron Door.



Recovered Energy



FEATURES

- » For Vented Gas or Wood Fireplaces
- » 14 Gauge Steel Construction
- » 200 CFM variable speed blower
- » Thermostatic on/off fan switch
- » 35,000 estimated BTU*
- » Easy install - just slide into fireplace
- » Top-mounted for installation over existing wood grates or gas log sets
- » Available in 15 powder coat or 8 overlay finishes
- » Choice of 5 louver designs
- » Special damper for gas logs
- » 5 yr. limited warranty
- » Power Cord can be routed out the left or right side at the bottom of the unit.

**Actual heat production is dependant on type and quality of wood used and the performance of the fireplace. No guarantee is made on heating capabilities of this product.*

§Fire shown inside closed doors is for display purposes only. DO NOT burn with doors closed unless doors have pyro-ceramic (stove) glass.

HEAT EXCHANGER



Louver Options



STO 1510



STO 1514



STO 1517



STO 1518



STO 1519



STO 1520



STO 1522



STO 1523



STO 1524

Capture escaping heat from your gas or wood fireplace by installing a Heat Exchanger. Unique, top-mounted design allows for easy installation over an existing gas log set.



Outlet | Heat Exchanger Unit | Outlet





Stoll Fireplace Inc. has acquired High Valley Stoves, a North Carolina stove company who manufactured wood stoves for over 30 years.

The current product line currently features 2 Catalytic type stoves and 3 Non-Catalytic, with different models available as Freestanding or Insert.

View the different models and specifications at the High Valley website.

www.highvalleystoves.com

▼ Heat Champion Finishes



Bronzed Iron



Charcoal



Matte Black



Silver Mist



Textured Black



Wea. Brown



Burnished Bronze

▼ Grate Heater Finish



Matte Black

Grate Heater covers are normally finished in Matte Black powder coat. Custom covers can be ordered with any of the finishes shown below for the Heat Exchanger.

▼ Heat Exchanger Finishes

**Decorative Louver Design of the Heat Exchanger is not available in Overlay Finishes.*

Overlay Finishes



Antique Brass



Satin Brass



Polished Brass



Pewter



Brushed Chrome



Gun Metal



Brushed Copper



Polished Chrome

Premium Finishes



Burnish Copper



Metallic Latte



Burnish Bronze



Rust Patina

Powder Coat Finishes



Vintage Vein



Copper Vein



Silver Vein



Nickel Vein



Matte Black



Charcoal



Rustic Vein



Tex. Black



Silver Mist



Bronzed Iron



Bone Taupe



Wea. Brown



Champagne



Aspire Rust



Oil Rub Bronze

Color pictures are a representation only. Please see your local dealer or contact Stoll to obtain a color sample where accurate color matching is necessary.

Feature Comparison Chart

Model	Wood	Gas	Rect. Opening	Arch Opening	Auto On/Off 110/90	Fan Output	BTU*	Finishes	Pyro-Ceramic Glass**	Cooking Grill§	Kettle Holder§
Heat Champion	•	n/a	•	•	•	200 CFM	45,000	6	•	•	•
Heat Exchanger	•	•	•	•	•	200 CFM	35,000	23	Optional	n/a	n/a
Grate Heater	•	n/a	•	•	•	125 CFM	35,000	23	Optional	n/a	n/a
Gas Log Heater	n/a	•	•	•	•	60 CFM	20,000	23	Optional	n/a	n/a

* Actual heat production is dependant on type and quality of wood used and the performance of the fireplace.

** Products with Tempered Glass must be open during full burn.

§ Cooking Grill and Kettle Holder are optional accessories for the Heat Champion. Not available with any other product.

NOTE: Fireplace must meet all NFPA 211 Standard for Chimneys, Fireplaces, Vents, and Solid Fuel-Burning Appliances before installing any of these products.

Heating Solutions Dimensions

	Model	Min. Opening Width	Min. Opening Height	Unit Depth	Unit Width	Unit Height	Unit Weight	Log Size
Heat Champion	HECH	24"	18"	custom	custom	16"	240 lbs.	18" - 24"
Heat Exchanger	HEEX	29"	26"	16"	25"	26"	40 lbs.	n/a
Grate Heater	GH2017	24"	24"	17"	20"	9.5"	50 lbs.	n/a
	GH2220	26"		20"	22"			
	GH2422	28"		22"	24"			
Gas Log Heater	GL2017 GL2420	24" 28"	24"	17" 20"	20" 24"	8.5"	25 lbs.	n/a

NOTE: Grate Heater and Gas Log Heater come standard with 48" wide cover, which can be trimmed to match opening.



Manufactured by:

Stoll Fireplace Inc.

153 Hwy. 201

Abbeville, SC 29620

800.421.0771

www.stollfireplace.com

P
R
E
S
E
N
T
E
D

B
Y

**Your Authorized
Stoll Dealer:**



Original Stoll Screen

STOLL FIREPLACE INC. WAS ESTABLISHED IN 1969 BY MR. WILLIAM F. STOLL, SR. A FAMILY OWNED AND OPERATED BUSINESS, IT BEGAN WITH ONE MAN'S NEED FOR A SCREEN THAT WOULD FIT HIS EXTRA LARGE FIREPLACE.

TODAY, WHILE STOLL STILL MANUFACTURES CUSTOM SCREENS; THE COMPLETE PRODUCT LINE RANGES FROM SCREENS TO GLASS DOORS, FROM ACCESSORIES TO HEATING SOLUTIONS. ALL STOLL'S PRODUCTS ARE HAND-CRAFTED IN THE USA, DESIGNED TO SAFELY AND EFFICIENTLY ENHANCE THE NATURAL BEAUTY OF YOUR FIREPLACE.

ABOVE ALL, MR. WILLIAM F. STOLL, SR.'S CHRISTIAN VALUES CONTINUE TO BE THE GUIDING PRINCIPLES OF THE COMPANY'S ETHICAL STANDARDS, CUSTOMER SATISFACTION, AND PRODUCT QUALITY.

