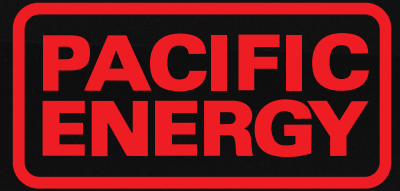


# WOOD BURNING INSERTS

CATALYTIC-FREE | EPA 2020 CERTIFIED



FEATURING  
**LE2**  
PRODUCTS



# TRADITIONAL SERIES

WOOD BURNING INSERTS



SUPER INSERT LE – METALLIC BLACK DOOR

Designed to deliver efficient combustion and controlled heat, Pacific Energy wood inserts are easy to light, easy to use, and provide a clear view of the flame. With variable speed fans, clean-glass airwash technology and heavy-gauge steel construction, our inserts will provide many years of comfort and enjoyment.

up to  
1500  
sq ft



VISTA INSERT LE2

up to  
2000  
sq ft



SUPER INSERT LE

up to  
3000  
sq ft



SUMMIT INSERT LE

# NEO SERIES

## WOOD BURNING INSERTS



NEO 1.6 INSERT LE2 - STAINLESS STEEL FRONT TRIM

Make your existing masonry fireplace a significant source of wood heat with the contemporary style of the Neo series inserts. Built with heavy-gauge steel, these wood inserts features our industry-leading secondary combustion system, our unique high capacity stainless steel baffle and advanced heat exchanger technology for exceptional clean-burning, efficient performance.

up to  
**1500**  
sq ft



NEO INSERT 1.6 LE2

up to  
**2000**  
sq ft



NEO INSERT 2.5 LE2

### FRONT TRIM CHOICES

Neo series inserts are customizable with two front trim finishes.

#### Metallic Black



#### Stainless Steel





# ALDERLEA SERIES

WOOD BURNING INSERTS



ALDERLEA T5 CLASSIC INSERT LE – ANTIQUE WHITE

Transform your fireplace into an efficient heating system and enjoy the traditional cast iron styling of the Alderlea T5 Insert LE. Choose from rich metallic black or the added beauty and charm of lustrous porcelain enamel to create a striking centerpiece that provides long-lasting, clean-burning heat.

up to  
2000  
sq ft



ALDERLEA T5 INSERT LE

up to  
2000  
sq ft



ALDERLEA T5 CLASSIC INSERT LE

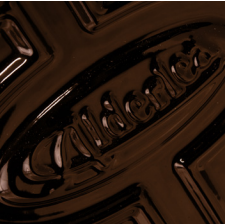
## PORCELAIN ENAMEL OPTIONS

Classic inserts are available  
in two porcelain enamel  
colors.

### Antique White



### Majolica







**BUILD YOUR STOVE**  
[pacificenergy.net/build-your-stove](http://pacificenergy.net/build-your-stove)



SUPER INSERT LE – BRUSHED NICKEL DOOR



ALDERLEA T5 CLASSIC INSERT LE – MAJOLICA



VISTA INSERT LE2 – NICKEL DOOR



NEO 1.6 INSERT LE2 – STAINLESS STEEL SURROUND



**EPA 2020  
CERTIFIED**



All Pacific Energy wood inserts come with these industry leading features:

- EPA 2020 Certified
- Reliable, durable, catalytic-free technology
- High capacity baffle system
- Multi-port combustion air injection system
- Air wash system for super clean ceramic glass
- Inside and outside combustion air capable
- Floating firebox for extended stove life
- Single-Lever Air Control



### VISTA INSERT LE2

For spaces up to 1500 sq. ft.

Heat Output Cord Wood

**56,000 BTU**

23,200 BTU EPA Test Fuel

Efficiency (HHV)	75%
Emissions	1.6 gm/hr.
Log Size (recommended)	16"
Log Size (max)	17"
Firebox Size	1.4 cu.ft.
Viewing Area	152 sq.in.
Max Burn Time (Approx)	7-10 Hours <sup>1</sup>



### SUPER INSERT LE

For spaces up to 2000 sq. ft.

Heat Output Cord Wood

**72,000 BTU**

38,200 BTU EPA Test Fuel

Efficiency (HHV)	71.3%
Emissions	1.8 gm/hr.
Log Size (recommended)	16"
Log Size (max)	18"
Firebox Size	2.1 cu.ft.
Viewing Area	122 sq.in.
Max Burn Time (Approx)	7-10 Hours <sup>1</sup>



### SUMMIT INSERT LE

For spaces up to 3000 sq. ft.

Heat Output Cord Wood

**99,000 BTU**

41,275 BTU EPA Test Fuel

Efficiency (HHV)	74%
Emissions	1.8 gm/hr.
Log Size (recommended)	18"
Log Size (max)	20"
Firebox Size	2.5 cu.ft.
Viewing Area	153 sq.in.
Max Burn Time (Approx)	9-12 Hours <sup>1</sup>

### VISTA INSERT LE2

#### STANDARD FEATURES

ACMS (Advanced Combustion Management System)  
304 Steel Baffle, Tubes, Rails and Flame Shield  
Removable flue collar for easier installation  
Knife edge door seal  
Rich metallic black finish  
Boost air for easy lighting  
1 x 80 cfm temperature-actuated variable-speed blower  
6" flue outlet  
East-West loading

#### DESIGN OPTIONS

Arched door: choice of three finishes  
Embossed surround, standard size (37" x 28")  
Embossed surround, oversize (42" x 30")

### SUPER INSERT LE

#### STANDARD FEATURES

Extended Burn Technology (EBT)  
304 Stainless Steel Baffle, insulation cover, rails and flame shield  
Removable flue collar for easier installation  
Knife edge door seal  
Boost air for easy lighting  
Rich Metallic black finish  
Cast iron warming shelf & ash lip  
Two temperature-actuated variable-speed blowers  
6" flue outlet  
North-South loading

#### DESIGN OPTIONS

Arched door: choice of three finishes  
Embossed surround, standard size (43" x 29")  
Embossed surround, oversize (48" x 33")

### SUMMIT INSERT LE

#### STANDARD FEATURES

Extended Burn Technology (EBT)  
304 Stainless Steel Baffle, insulation cover, rails and flame shield  
Removable flue collar for easier installation  
Knife edge door seal  
Boost air for easy lighting  
Rich Metallic black finish  
Cast iron warming shelf & ash lip  
Easy and safe front to back fuel loading  
Two temperature-actuated variable-speed blowers  
6" flue outlet  
North-South loading

#### DESIGN OPTIONS

Arched door: choice of three finishes  
Embossed surround, standard size (50 3/8" x 32 1/4")  
Embossed surround, oversize (54 3/8" x 34 1/4")



Pacific Energy Traditional Inserts are customizable in your choice of door finishes. Available in Nickel, Metallic Black and Brushed Nickel.







### NEO 1.6 INSERT LE2

For spaces up to 1500 sq. ft.

Heat Output Cord Wood

**56,000 BTU**

23,200 BTU EPA Test Fuel



Efficiency (HHV)	75%
Emissions	1.6 gm/hr.
Log Size (recommended)	16"
Log Size (max)	17"
Firebox Size	1.4 cu.ft.
Viewing Area	147 sq.in.
Max Burn Time (Approx)	7-10 Hours <sup>1</sup>



### NEO 2.5 INSERT LE2

For spaces up to 2000 sq. ft.

Heat Output Cord Wood

**85,000 BTU**

60,000 BTU EPA Test Fuel

\*Subject to change

Efficiency (HHV)	73%
Emissions	1.6 gm/hr.
Log Size (recommended)	17"
Log Size (max)	18"
Firebox Size	1.9 cu.ft.
Viewing Area	166 sq.in.
Max Burn Time (Approx)	8-12 Hours <sup>1</sup>



### ALDERLEA T5 INSERT LE

For spaces up to 2000 sq. ft.

Heat Output Cord Wood

**72,000 BTU**

38,200 BTU EPA Test Fuel

Efficiency (HHV)	71.3%
Emissions	1.8 gm/hr.
Log Size (recommended)	16"
Log Size (max)	18"
Firebox Size	2.1 cu.ft.
Viewing Area	163 sq.in.
Max Burn Time (Approx)	7-10 Hours <sup>1</sup>

### NEO 1.6 INSERT LE2

#### STANDARD FEATURES

ACMS (Advanced Combustion Management System)  
304 Stainless Steel Baffle, Tubes\* insulation cover, rails and flame shield  
High-tech multi-port combustion air injection system  
Removable Flue Collar  
Knife edge door seal  
Rich metallic black finish  
Integrated Heat Exchanger  
6" flue outlet  
East-West loading  
2x80 cfm temperature actuated variable speed blowers

#### DESIGN OPTIONS

Contemporary front trim in Metallic Black or Stainless Steel  
Standard backing plate (37" x 26 3/4")  
Oversize backing plate (46" x 30")

### NEO 2.5 INSERT LE2

#### STANDARD FEATURES\*

ACMS (Advanced Combustion Management System)  
304 Stainless Steel Baffle, Tubes, rails and flame shield  
High-tech multi-port combustion air injection system  
Removable Flue Collar  
Knife edge door seal  
Rich metallic black finish  
Integrated Heat Exchanger  
6" flue outlet  
East-West loading  
2x80 cfm temperature actuated variable speed blowers

#### DESIGN OPTIONS\*

Contemporary front trim in Metallic Black or Stainless Steel  
Standard backing plate  
Oversize backing plate

### ALDERLEA T5 INSERTS

#### STANDARD FEATURES

Extended Burn Technology (EBT)  
304 Stainless Steel Baffle, insulation cover, rails and flame shield  
Boost air for easy lighting  
Cast iron warming shelf & ash lip  
Two temperature-actuated variable-speed blowers  
6" flue outlet  
Removable flue collar  
North-South loading

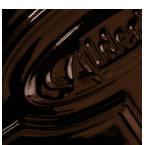
#### DESIGN OPTIONS

Metallic Black or porcelain enamel finish in Majolica or Antique White  
Standard surround (42 1/2" x 30 3/8")  
Oversized surround (42 1/2" x 34 1/8")



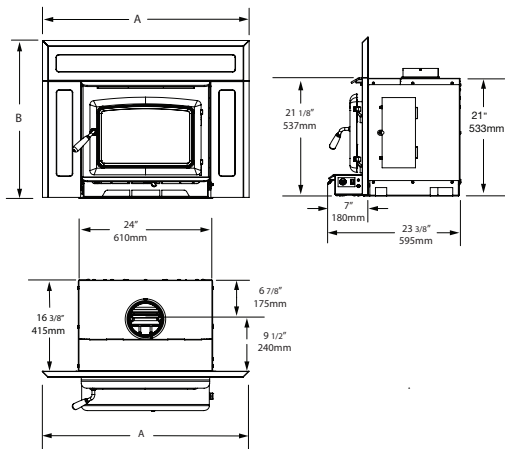
Pacific Energy Neo series inserts are customizable with your choice of Metallic Black or Stainless Steel front trims.

Alderlea series inserts are customizable with your choice of painted metallic black finish or two striking porcelain enamel finishes – Antique White or Majolica Brown.

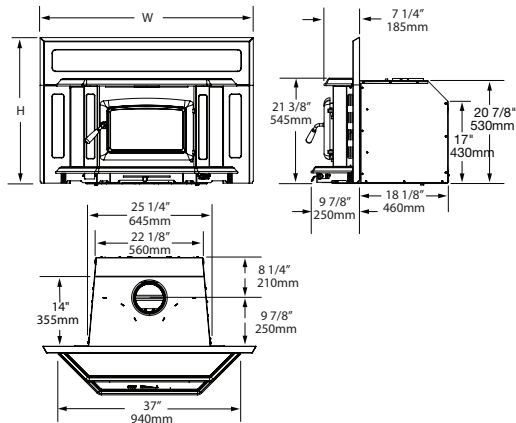


\*Neo 2.5 Insert LE2 specifications may be subject to change  
<sup>1</sup> Burn times depend on draft, fuel, loading, and user input.

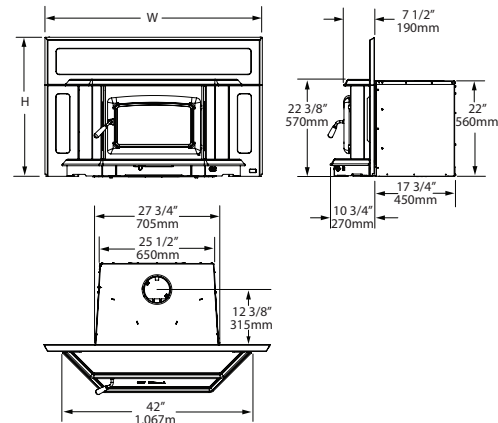
## VISTA INSERT LE2



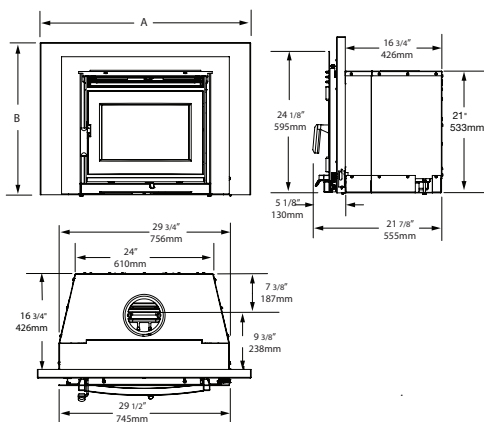
## SUPER INSERT LE



## SUMMIT INSERT LE



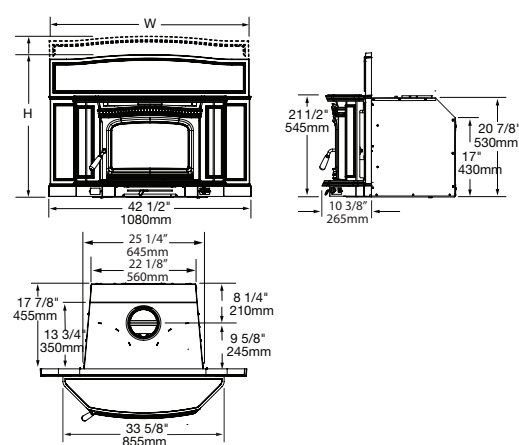
## NEO 1.6 INSERT LE2



## NEO 2.5 INSERT LE2



## ALDERLEA T5 INSERT LE



## INSTALLATION

### MINIMUM CLEARANCES TO COMBUSTIBLES

	A	B*	C	D (Can)	D (USA)	E
NEO 1.6 INSERT LE2 <sup>1</sup>	9 1/2"	13"	13"	18"	16"	8"
NEO 2.5 INSERT LE2 <sup>1</sup>	TBD	TBD	TBD	TBD	TBD	TBD
VISTA INSERT LE2 <sup>1</sup>	9 1/2"	13"	13"	18"	16"	8"
SUPER INSERT LE <sup>2</sup>	6"	12"	10"	18"	16"	8"
SUMMIT INSERT LE <sup>2</sup>	8"	15"	8"	18"	16"	8"
ALDERLEA T5 INSERT LE <sup>2</sup>	6"	12"	10"	18"	16"	8"

### MINIMUM FIREPLACE OPENING

A	B	C	D
21"	30"	17"	24 1/2"
TBD	TBD	TBD	TBD
21"	24 1/2"	17"	24 1/2"
21"	26"	18 3/8"	22 1/2"
22 1/2"	28 1/4"	19"	26 1/4"
21"	26"	18 3/8"	22 1/2"

### SURROUND SIZES

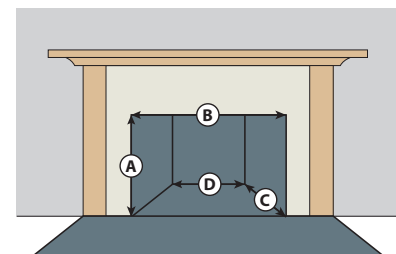
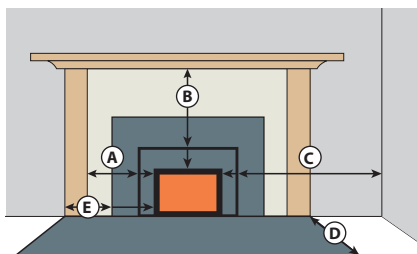
STANDARD		OVERSIZE	
Width (W)	Height (H)	Width (W)	Height (H)
37"	26 3/4"	46"	30"
TBD	TBD	TBD	TBD
37"	28"	42"	30"
43 3/8"	29 3/16"	48"	33"
50 3/8"	32 1/4"	54 3/8"	34 1/4"
42 1/2"	29 3/8"	42 1/2"	33 1/8"

For reference only. Installations should be based on manuals and rating labels. Specifications subject to change.  
(1) Distances are from Firebox Side. (2) Distances are from the Blower Covers. (\*)Distances are from the top.



SKU: 11900081 – 25/03 – Printed in Canada

Pacific Energy is committed to continuous product improvement and innovation. As a result, appearance and specifications of the products featured in this brochure are subject to change without notice. For more information, please visit [pacificenergy.net](http://pacificenergy.net)



@pacificenergyfireplaceproducts

Follow us on Facebook and Instagram for news, promotions, and inspiring installations.