

VENTIS[®] *for the* HEARTH SIDE

ZERO CLEARANCE FIREPLACES | CLEAN COMBUSTION | SUPERIOR QUALITY MANUFACTURING



VENTIS
WOOD BURNING
FIREPLACES



LYMPIA
CHIMNEY SUPPLY Inc.

"Your Partner in the Business"



QUALITY AND COMFORT

Our three new zero-clearance, wood-burning fireplaces are designed and built with today's most advanced materials, technology and options. Combined with our award-winning Ventis® CLASS A chimney system, these beautiful hearths deliver the ultimate in eco-friendly combustion and safety. Never before has high-tech performance been so beautiful and comfortable.





HE200

with double retractable doors

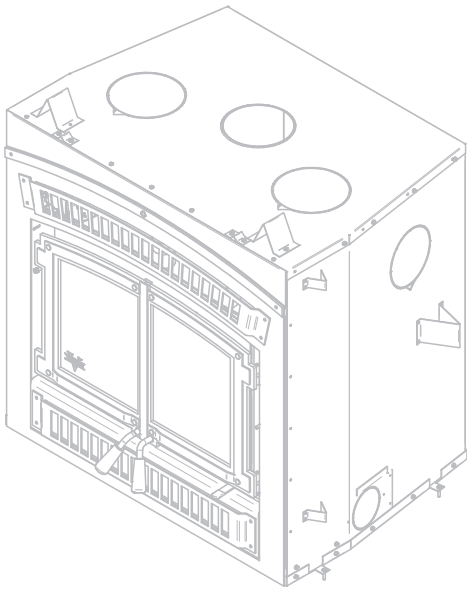


HE250

with large single door

How many certified fireplaces compare to our HE200? Read on and you will discover that very few zero-clearance wood fireplaces can match the exceptional features of our HE200: an overnight burn, double retractable doors, cast refractory bricks, standard blower system, optional firescreen doors, and hot air distribution capabilities. When wood-heating is taken seriously, no detail should be overlooked. This is why the HE200 will impress you. Eco-friendly heating is not a stretch when emissions are 4.0 g/h and efficiency tops 75%. Get the best of today's wood fireplace technology with a traditional design!

Contemporary design... straight lines, clean shapes, neutral colors. Our HE250 brings a modern touch and blends functionality and comfort perfectly. Obtain the same key features as our HE200, but with extra firebox volume and a larger glass viewing area. With an efficiency topping 77% and emission of 4.4 g/h, there is not much more one can ask from a zero-clearance wood fireplace. The HE250 allows you to insert your personal touch with the option of a distinctive brushed nickel door overlay. Make your living room cozy and inviting for those cold winter nights!



FEATURES

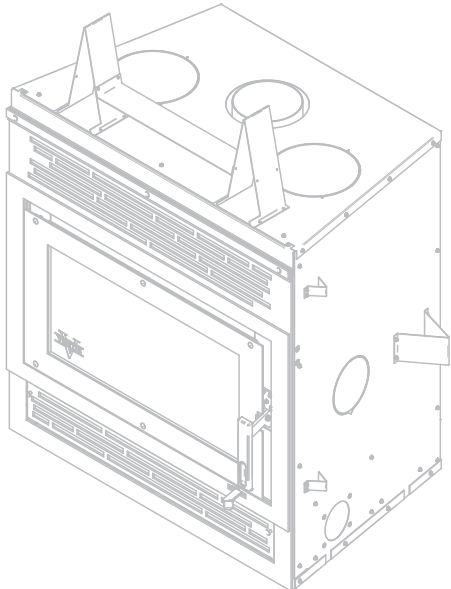
Maximum output - seasoned cord wood	65,000 BTU
Recommended heating area	500 - 1,800 sq. ft.*
Firebox volume	2.0 cu. ft.
Maximum log length	16"
Cast refractory bricks	Included
Ventis anchor plate	Included
120 CFM Blower	Included
EPA Certified	Yes

REQUIRED ACCESSORIES

Rustic style faceplate - metallic black	VWF1530
Black door overlay	VWF1515
Brushed nickel door overlay	VWF1516

OPTIONS

Forced air kit	VWF4460
Hot air gravity kit - traditional style	VWF1375
Hot air gravity kit - modern style	VWF1385
Firescreen	VWF8420



FEATURES

Maximum output - seasoned cord wood	75,000 BTU
Recommended heating area	500 - 2,000 sq. ft.
Firebox volume	2.5 cu. ft.
Maximum log length	21"
Cast refractory bricks	Included
Ventis anchor plate	Included
120 CFM Blower	Included
EPA - certified	Yes

REQUIRED ACCESSORIES

Modern style faceplate - metallic black	VWF1500
Black door overlay	VWF1510
Brushed nickel door overlay	VWF1511

OPTIONS

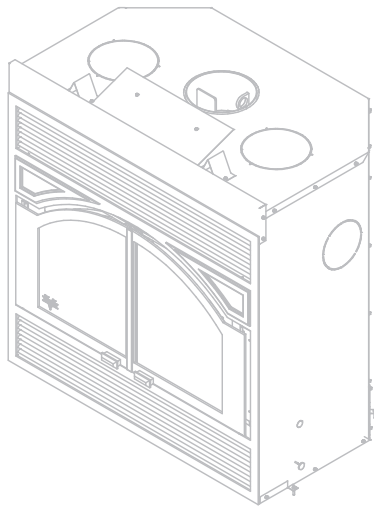
Forced air kit	VWF1340
Hot air gravity kit - modern style	VWF1385
Hot air gravity kit - traditional style	VWF1375
Firescreen	VWF1560



ME300

with arched doors

Enjoy both the sounds and the heat of a natural fireplace with our Ventis ME300. Thanks to its two standard firescreen doors, the fireplace can be operated with the glass doors opened. Its extra large 4.25 cubic foot firebox is clearly a guarantee for the best looking fire. Although the ME300 is not designed to provide an overnight burn, it is powerful enough to heat up to 1,500 square feet. Get the most out of this truly exceptional fireplace by using its standard blower or installing its optional warm air distribution kit. The features of our ME300 were created without compromise for the environment. Indeed, its emissions have been tested at 2.9 g/kg and are below the Phase II limit of the EPA Voluntary Wood Fireplace Program.



FEATURES

Recommended heating area	< 1,500 sq. ft.*
Firebox volume	4.25 cu. ft.
Maximum log length	20"
Cast refractory bricks	Included
Ventis anchor plate	Included
120 CFM Blower	Included
EPA Qualified	Yes

REQUIRED ACCESSORIES

Rustic style faceplate - metallic black **VWF1520**

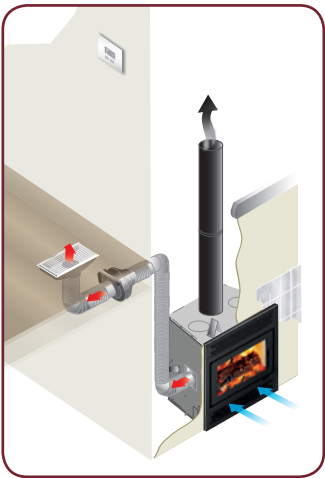
OPTIONS

Forced air kit	VWF1340
Hot air gravity kit - traditional style	VWF1375
Hot air gravity kit - modern style	VWF1376



HEAT DISTRIBUTION

Since your Ventis Fireplace produces a significant amount of heat, you may wish to bring the heat to other parts of the house. Through our research and development we have designed a heat management system that allows recovery of the heat during combustion and redirects it into distribution ducts to heat other areas of the home.

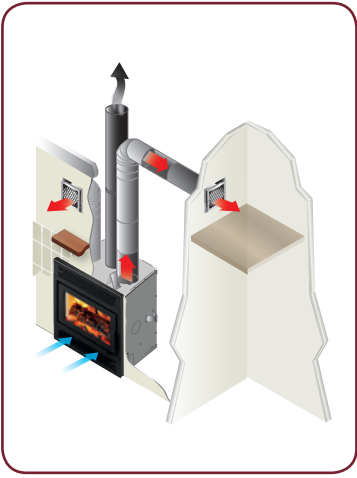
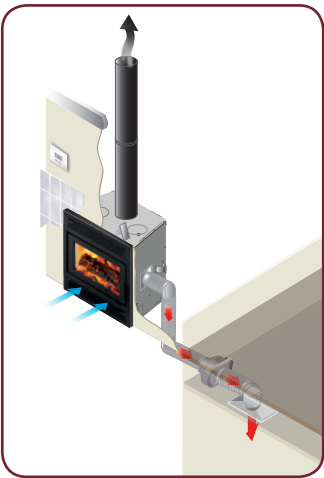


FORCED AIR DISTRIBUTION KIT

(Heat Management System)

This system allows you to manage the heat distribution automatically. Using a wall thermostat, you can select the temperature you want to maintain in the room where the fireplace is located. Once the thermostat is satisfied, the excess heat is redirected to another room up to 50 feet (15 m) away from the fireplace using a 350 CFM blower. That way, you can enjoy a nice fire in your living room without the discomfort of excess heat generated by your Ventis fireplace.

The system can also be used to supplement heat in a room remote from the fireplace. For this type of application, the thermostat needs to be positioned in the desired room and programmed with the temperature to be maintained. The system, now in “heat mode”, will activate the blower as long as the temperature in the remote room is not achieved and that the fireplace has enough heat to distribute.



GRAVITY KIT

Ventis offers you another way to distribute excess heat into your home with the help of a gravity kit.

The Gravity Kit allows you to bring heated air to rooms above the fireplace. Simply attach the pipe to your fireplace and bring it to the room you wish to heat. Since it is gravity fed, it is silent.



MODELS	ME300	HE200	HE250
Color	Black	Black	Black
Burn time (on low setting)	-	6 to 8 hours	8 to 9 hours
Combustion technologie	Non-Catalytic	Non-Catalytic	Non-Catalytic
Heating capacity - BTU/hr., EPA test wood	-	36,900	30,450
Heating capacity - BTU/hr., seasoned cord wood	-	65,000	75,000
Emissions (EPA)	2.9 g/kg	4.0 g/h	4.4 g/h
Optimum efficiency	-	75%	77%
Door opening dimensions (W x H)	30" x 16 1/2"	21 3/4" x 11 1/4"	25 1/2" x 10 3/4"
Firebox dimensions (W x D) behind andiron	23 1/2" x 11 3/8"	19 3/4" x 12 7/8"	20 1/4" x 12 7/8"
Glass viewing area (W x H)	29" x arched from 11 3/16" to 17 3/16"	19 7/8" x arched from 11 13/16" to 12 11/16"	24 3/8" x 12"
Door frame	Double, with steel frame	Double, retractable with steel frame	Single, with steel frame
Log positioning	East / West	East / West	East / West
Chimney diameter (inner)	8"	6"	6"
Minimum chimney height (from floor)	15'	15'	15'
Glass type	Ceramic glass	Ceramic glass	Ceramic glass
Warranty	Limited lifetime	Limited lifetime	Limited lifetime
Test standard - Emissions	ASTM 2515 / ASTM 2558	EPA Method 28	EPA Method 28
Test standard - Safety	ULC S-610 / UL 127	ULC S-610 / UL 127	ULC S-610 / UL 127

Exterior dimensions and weight

Width	41 3/16"	37 3/4"	37 7/8"
Depth	25 1/2"	26 1/2"	24 3/4"
Height	43 5/8"	36 7/16"	47 1/8"
Weight	500 lb	450 lb	391 lb

Clearances to combustible materials

Side wall	24"	16"	24"
Back wall	0"	0"	0"
Sides	0"	0"	0"
Floor	0"	0"	0"
Ceiling	72"	84"	80"
Shelf (from bottom of fireplace)*	48"	48" **	58"
Side mantle	0"	0"	0"
Non-combustible surround (top) from door opening	5 1/2"	24" **	24"
Non-combustible surround (sides) from door opening	0"	1 1/2"	1 1/2"

Options

Outside air intake (diameter)	Yes (4")	Yes (4")	Yes (3" or 4")
Hot air gravity kit (diameter)	Optional (8")	Optional (8")	Optional (8")
Forced air kit (diameter)	Optional (6")	Optional (6")	Optional (6")
Firescreen	Standard	Optional	Optional

*For installation of a 6" deep shelf. For other shelf dimensions, refer to owner's manual.

**With the use of a heat shield. Refer to owner's manual for details.

Note : Technical data contained in this brochure are for reference only. Any installation must be done according to the data and drawings detailed in the Owner's manual.

WHAT IS THE DIFFERENCE BETWEEN EPA-CERTIFIED AND EPA-QUALIFIED FIREPLACES?

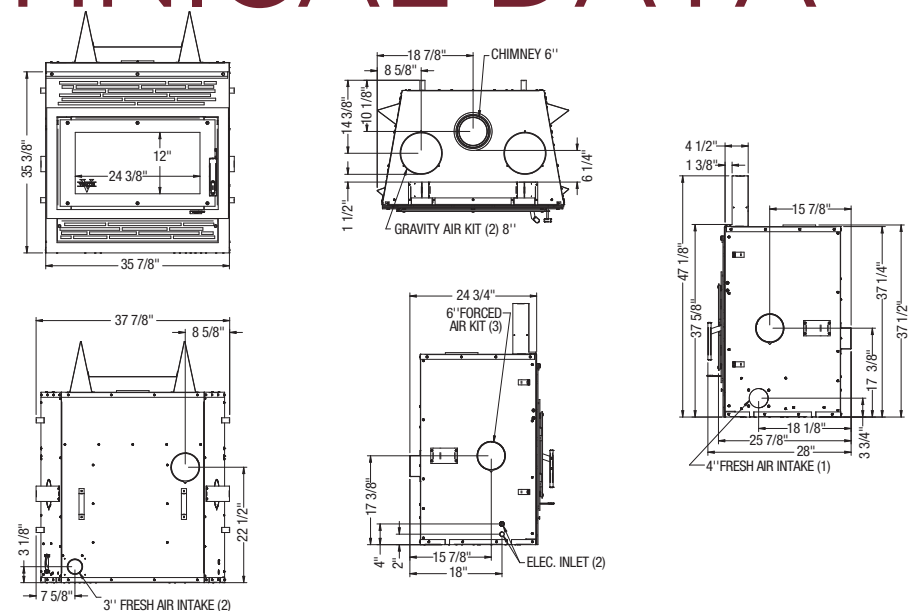
EPA-Certified wood fireplaces (HE200 / HE250) have been tested with emissions below the limit imposed by the EPA wood heater standard (40 CFR Part 60 – Method 28). Just like an EPA-certified wood stove, you get the benefit of an efficient, overnight burn, and you can adjust the combustion air intake from a high burn rate to a slow burn rate. Emissions are reported in grams per hour. Their efficiency is tested to the CSAB415.1-10 standard and usually tops 75%.

EPA-Qualified wood fireplaces (ME300) have been tested with emissions below the limit proposed by the EPA Voluntary Wood Fireplace Program. Their emissions are reported in grams per kilogram. These fireplaces are used for the same purpose as conventional open wood-burning fireplaces. They produce good heat and have an exceptional fire viewing area. They are great to use with the doors opened or closed. However, they are not designed for an overnight burn and have no combustion air control.

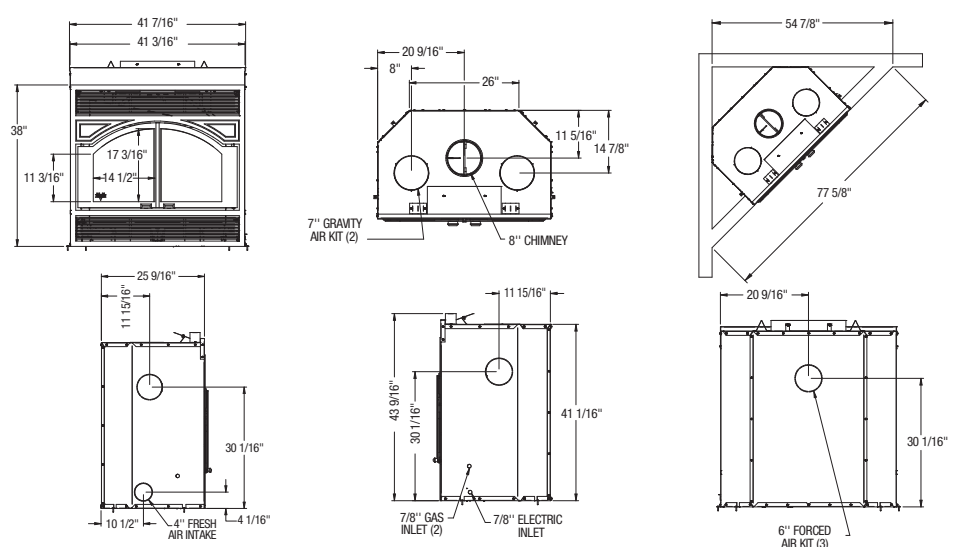
TECHNICAL DATA



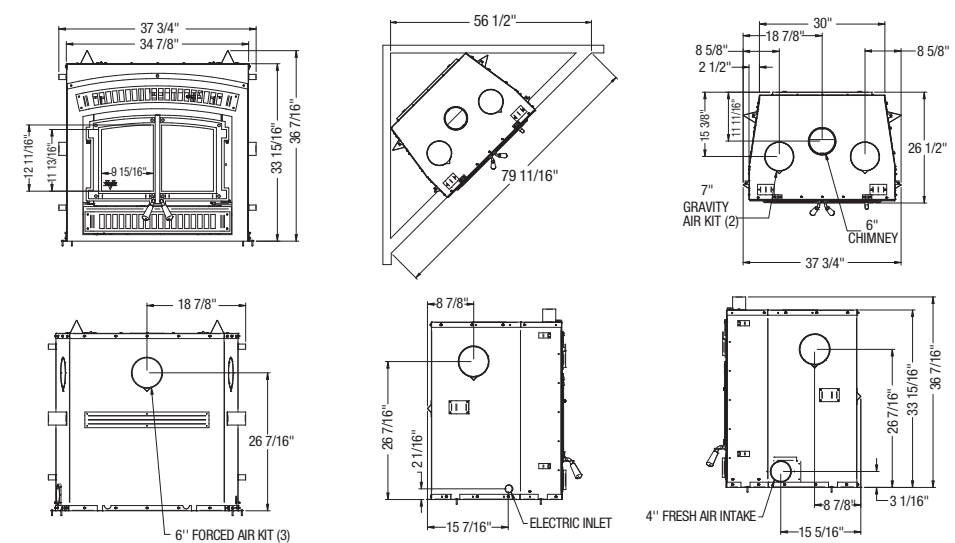
HE250



ME300



HE200





A CLASS OF ITS OWN

The Ventis® Class-A All-Fuel Chimney System is the perfect chimney and venting solution for our wood burning fireplaces. The system is Manufactured by Olympia Chimney Supply and constructed from quality materials. It is comprised of many unique features and backed by a Forever Warranty. Ventis® Class-A is a UL Listed system that sits in a class of its own!

UL103HT & ULC S629 Listed

Available with 304L or 316L inner wall pipe

Manufactured in the USA, Scranton, PA

All Stainless Steel Inner and Outer Casing

Attractive Mirror Finish 430 Stainless Steel Outer Casing

Forever Warranty

Superior packaging virtually eliminates shipping damage

Not sold through 'big box stores'



THE OLYMPIA STORY

Olympia Chimney Supply has over 30 years of venting background and experience. At Olympia we are committed to advocating and promoting the safe venting of home heating appliances. We work closely with national safety institutions such as the Chimney Safety Institute of America (CSIA). Our affiliations with industry organizations such as the National Chimney Sweep Guild (NCSG) and the Hearth, Patio and Barbeque Association (HPBA) keep us in the forefront of meeting the venting challenges of modern heating appliances.

The Olympia commitment to a quality product starts with innovative design and engineering. We continue this commitment by working with the world-class testing and listing agency, Underwriters Laboratories (UL). UL not only tests our products to its high safety standards, but in addition their factory inspections ensure that each system produced continues to measure up to this high standard. Our quality is also evident from the raw materials we use - only prime stainless steel from the best steel mills.

Olympia calls home what we like to call "the heart of industrial America", Scranton, Pennsylvania. Scranton is home to steamtown locomotives, coal mining, iron ore, and a legacy of hardworking Americans. The Olympia Family takes what we do to heart and knows that your family is relying on us to deliver a safe, quality product.



